



BUZZER ELEMENT 230V AC (PULSAT./CONTIN. TONE ADJUST.)

Figure similar

General technical data:		
product brand name		SIRIUS
Type of voltage of the operating voltage		AC
Operating voltage		
• 1 with AC at 50 Hz Rated value	V	230
• 1 with AC at 60 Hz Rated value	V	230
Type of acoustic signal		continuous tone / pulse tone
Loudness level	dB	80
Equipment marking acc. to DIN EN 61346-2		P
Mechanical data:		
Outer diameter of the signal column element	mm	50
Ambient conditions:		
Ambient temperature during operation	°C	-20 ... +50
Protection class IP		IP54
Product function adjustable acoustic signal		Yes
Height	mm	72
Width	mm	52
Certificates/ approvals:		

General Product Approval	EMC	Declaration of Conformity	Shipping Approval
--------------------------	-----	---------------------------	-------------------



### Further information

**Information- and Downloadcenter (Catalogs, Brochures,...)**

<http://www.siemens.com/industrial-controls/catalogs>

**Industry Mall (Online ordering system)**

<http://www.siemens.com/industrymall>

**Cax online generator**

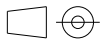
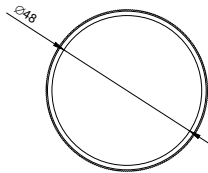
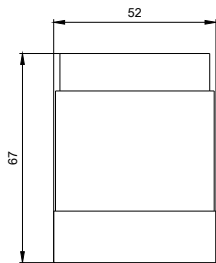
<http://support.automation.siemens.com/WW/CAXorder/default.aspx?lang=en&mlfb=8WD42500FA>

**Service&Support (Manuals, Certificates, Characteristics, FAQs,...)**

<https://support.industry.siemens.com/cs/ww/en/ps/8WD42500FA>

**Image database (product images, 2D dimension drawings, 3D models, device circuit diagrams, EPLAN macros, ...)**

[http://www.automation.siemens.com/bilddb/cax\\_de.aspx?mlfb=8WD42500FA&lang=en](http://www.automation.siemens.com/bilddb/cax_de.aspx?mlfb=8WD42500FA&lang=en)



W8 4444: 8WD42-...\_ALL  
W8 8611:

last modified:

15.01.2015