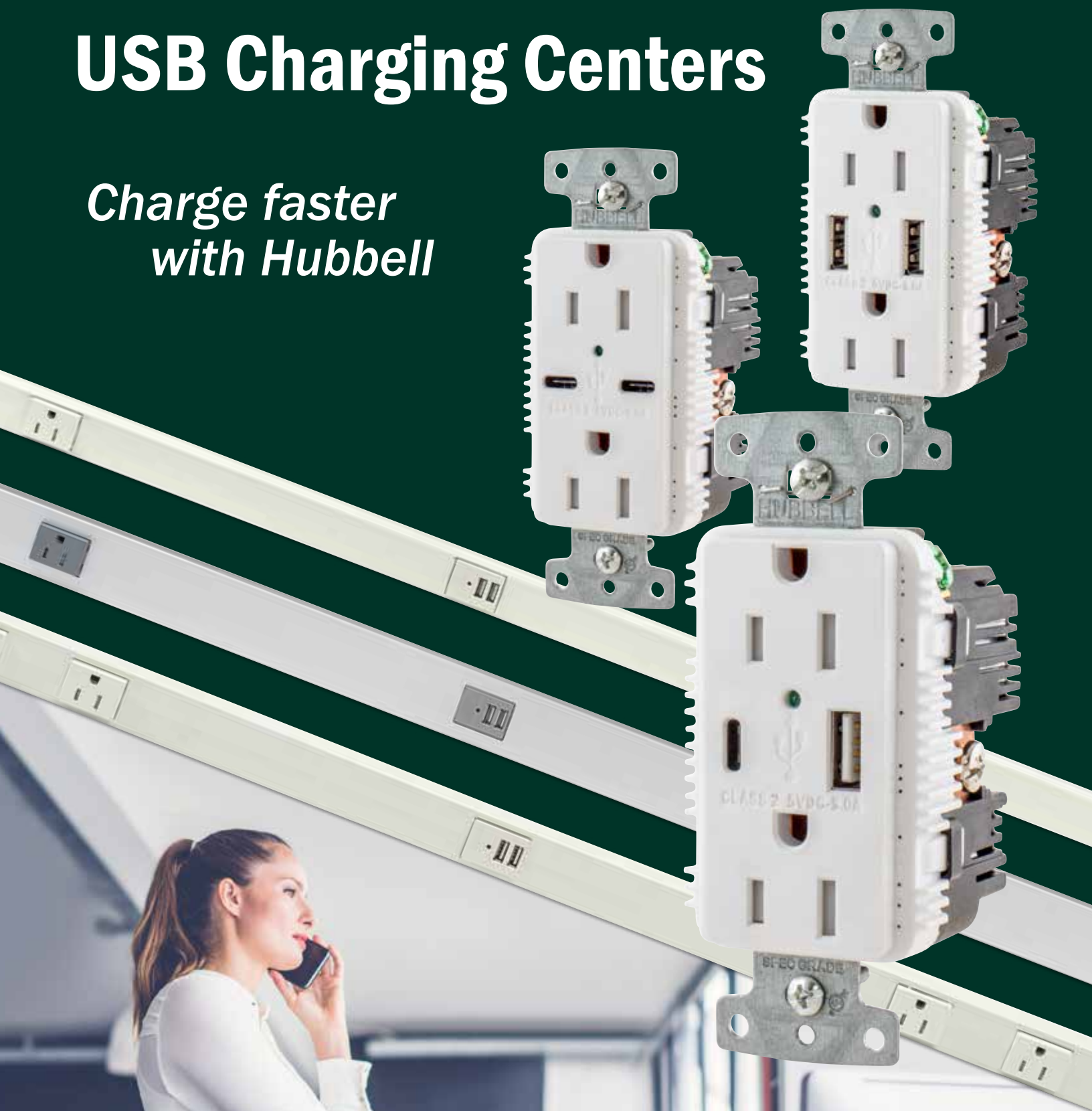


# USB Charging Centers

*Charge faster  
with Hubbell*



## USB Type-C

**What is it?** The USB Type-C is a 24-pin double-sided configuration connection system. Consisting of connectors and cables, it enables electronic devices to distribute power and data. Hubbell has developed its next generation of USB charging devices with the Type-C port.

**Why is it so special?** Its small size and symmetry allow for robust and reliable integration into electronics. The 24-pin configuration features a 12-over-12 design, permitting convenient, reversible insertion. More importantly, accidentally inserting the cord in the wrong direction will not damage the port. It provides an element of future-proofing: there is one cord and connector to do it all. Type-C is smaller, better and quicker.

**What about my old USB cords and devices?** While not physically backwards compatible, the technology inside is. Using a Type-C to Type A adapter will allow the cords and devices to connect and charge. The charging protocol is managed by USB standard BC1.2 and will default to the minimum charging levels.

**Will Type-C charge all portable electronics?** Hubbell's Type-C is capable of supplying 25 watts of power. This is plenty of power for phones and most tablets to charge quickly. However, some devices may need more power. It is advised to review the electronic device for the required wattage.

Currently, Type-C is used in devices such as laptops, phones, and tablets. Given time, it will migrate to almost everything that currently uses the older, larger USB connector.



# USB Charger Receptacles FAQ

## Why Design with a USB Charger?

- The Hubbell USB Charger Receptacle is a permanent solution for device charging, compatible with all USB powered portable devices. No more misplaced chargers or dealing with outlet clutter.
- The USB Charger Receptacle is designed to last. Its current transformer converts AC power to DC, providing clean, stable power, low heat, and longevity. Plug-in cubes and adapters tend to have a short product life, making the USB Receptacle the economical choice.
- Offering a full 5 Amps of power at 5V DC, the Hubbell USB Duplex has the power to charge your device quickly. The 4 Port has 5 Amps of available power for a similarly rapid charge.

## Performance vs. Energy

- While our devices provide a fast charge, they also excel in efficiency when not in use. When not active, the USB Duplex enters a sleep mode and consumes minimal power. The 4 Port cuts power completely when the shutter is closed, making it our “go green” recommendation.

## Where Should a USB Charger be Installed?

- Anywhere people work, meet or rest, they need access to charging power. Common spaces for charging include desks, countertops and end tables. If you’ve seen a portable charger in a wall box, it’s a good choice for a permanent solution.
- It’s not just for homes: USB Receptacles are the standard in offices, airports, hospitals and other commercial spaces. From nurses who use tablets for patient care to business people charging their phones before flights, everyone needs a quick charge – and the Hubbell USB Receptacle line is the best choice for the job!
- For more information visit [www.hubbell-wiring.com](http://www.hubbell-wiring.com), and go to FAQ under the Resources tab.

## Why is Hubbell the Best Choice?

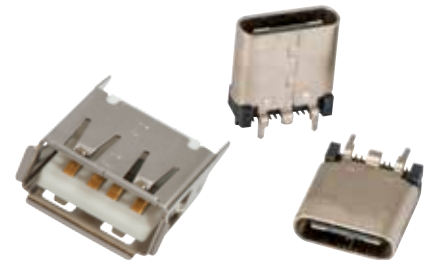
*Because Hubbell designs and builds beyond the basic requirements.*

The Hubbell USB Charger incorporates a transformer designed to step down the 120 volt AC current to direct current. As a result, the transformer ensures “clean” power with inherent surge protection to the ports. This allows the USB charger to be used on either AFCI or GFCI protected circuits, without causing or receiving interference. Through the use of addition circuitry the power stability is enhanced. The transformer enables the device to charge with minimum heat build-up to provide many years of reliable use.

Hubbell’s 4 Port USB Charger Outlets are able to charge multiple devices simultaneously using either A or C ports.



## Heavy Duty Stainless Steel USB Ports



- Rated for minimum 10,000 insertions and removals
- Extends longevity to many years
- Firm holding connections

These receptacles and outlets are capable of delivering 5 Amps, 5V DC for 25 watts of USB power.

## USB Charger Duplex Receptacles

### Type-C/Type A&C/Type A

#### Charger Receptacle Features

- Two USB ports, 5V DC, Type A and/or C, class 2.0
- Tamper-Resistant decorator duplex receptacle
- Standard and Hospital grade available
- cULus listed to UL498 and UL1310
- LED ON to indicate USB and line voltage power available

#### Additional SNAPConnect<sup>®</sup> Features

- The SNAPConnect<sup>®</sup> modular connector is installed during rough-in. Once the walls are up, the protective covering is removed and the terminal is simply snapped into the SNAPConnect<sup>®</sup> device for a consistent connection every time.
- SNAPConnect<sup>®</sup>'s modular design enables simple device change-out by maintenance personnel.



## USB Charger Outlets and Switch Combo

#### 4 Port Features

- Four USB ports, 5V DC, Type C and A&C
- Switch activated port door; when open enables power. When closed, all power is switched off for a "zero" no-load draw
- cULus listed to UL1310

#### Switch Combo Features

- Switch replacement adds USB charging at counter tops
- Two USB ports, 5V DC, Type A
- Isolated 15 Amp, 120V AC single pole/3-way switch
- cULus listed to UL20 and UL1310

#### Raceway Features

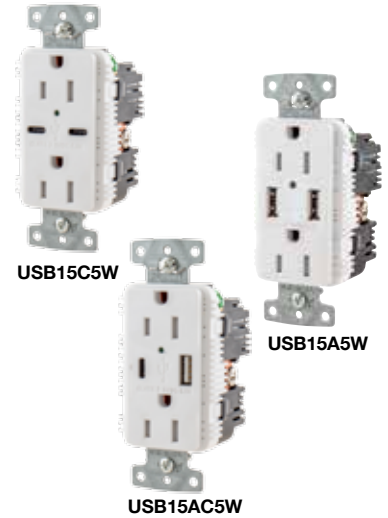
- Two USB ports, 5V DC, Type A, class 2.0
- Steel, Aluminum, and Non-Metallic
- cULus listed to UL5 Steel and Aluminum, UL5A Non-Metallic, UL1363 Portable Plug-in, and UL1310



## Standard USB Charger Duplex Tamper-Resistant Receptacles

Description	Color	15A 125V AC	20A 125V AC
Type-C USB Charger Receptacle, two Type-C port configurations, high power 5 Amp, 5 Volt USB output	Ivory	<b>USB15C5I</b>	<b>USB20C5I</b>
	Light Almond	<b>USB15C5LA</b>	<b>USB20C5LA</b>
	White	<b>USB15C5W</b>	<b>USB20C5W</b>
Type A&C USB Charger Receptacle, one Type A and one Type-C port configuration, high power 5 Amp, 5 Volt USB output	Ivory	<b>USB15AC5I</b>	<b>USB20AC5I</b>
	Light Almond	<b>USB15AC5LA</b>	<b>USB20AC5LA</b>
	White	<b>USB15AC5W</b>	<b>USB20AC5W</b>
Type A USB Charger Receptacle, two Type A port configurations, high power 5 Amp, 5 Volt USB output	Ivory	<b>USB15A5I</b>	<b>USB20A5I</b>
	Light Almond	<b>USB15A5LA</b>	<b>USB20A5LA</b>
	White	<b>USB15A5W</b>	<b>USB20A5W</b>

Note: Also available in black, brown and gray. Hospital Grade: USB8200 & USB8300 series



## SNAPConnect® USB Charger Duplex Tamper-Resistant Receptacles

Description	Color	15A 125V AC	20A 125V AC
SNAPConnect® USB Charger Receptacle, one USB Type A and one Type-C port, 3.0 Amp, 5 Volt DC	Ivory	<b>SNAP15UACI</b>	<b>SNAP20UACI</b>
	Light Almond	<b>SNAP15UACLA</b>	<b>SNAP20UACLA</b>
	White	<b>SNAP15UACW</b>	<b>SNAP20UACW</b>
Hospital Grade SNAPConnect® USB Charger Receptacle, one USB Type A and one Type-C port, 3.0 Amp, 5 Volt DC	Ivory	<b>SNAP8200UACI</b>	<b>SNAP8300UACI</b>
	Light Almond	<b>SNAP8200UACLA</b>	<b>SNAP8300UACLA</b>
	White	<b>SNAP8200UACW</b>	<b>SNAP8300UACW</b>
SNAPConnect® USB Charger Receptacle, two USB Type-C ports, 3.0 Amp, 5 Volt DC	Ivory	<b>SNAP15UCI</b>	<b>SNAP20UCI</b>
	Light Almond	<b>SNAP15UCLA</b>	<b>SNAP20UCLA</b>
	White	<b>SNAP15UCW</b>	<b>SNAP20UCW</b>
Hospital Grade SNAPConnect® USB Charger Receptacle, two USB Type-C ports, 3.0 Amp, 5 Volt DC	Ivory	<b>SNAP8200UCI</b>	<b>SNAP8300UCI</b>
	Light Almond	<b>SNAP8200UCLA</b>	<b>SNAP8300UCLA</b>
	White	<b>SNAP8200UCW</b>	<b>SNAP8300UCW</b>

Clear right angle terminal; 6 inch leads; #12 AWG THHN/THWN-2; Polycarbonate housing material

Solid  
Stranded

**SNAP1RA**  
**SNAP2RA**

Note: Standard also available in black, brown and gray. Hospital Grade also available in black, brown, gray and red.



## USB Charger Outlets

Description	Color	4 Type A ports*	2 Type A and 2 Type-C ports	4 Type-C ports
USB Charger Outlets, 4 USB ports, 5 Amp, 5 Volt DC, Style Line® decorator	Ivory	<b>USB4I</b>	<b>USB4ACI</b>	<b>USB4CI</b>
	Light Almond	<b>USB4LA</b>	<b>USB4ACLA</b>	<b>USB4CLA</b>
	White	<b>USB4W</b>	<b>USB4ACW</b>	<b>USB4CW</b>

Note: Also available in black, brown and gray.

\*USB Charger Outlet with 4 USB Type A ports is listed under cETLus.

## Switch Combo Outlets

Description	Color	Catalog Number
Switch Combo Outlet, two USB Type A ports, 2.1 Amp, 5 Volt DC, Style Line® decorator	Ivory	<b>USB102I</b>
	Light Almond	<b>USB102LA</b>
	White	<b>USB102W</b>

Note: Also available in black, brown and gray.



## PlugTrak® Raceway with USB Charger Outlets

USB Type A ports, 2.4 Amp, 5 Volt DC, 15 Amp, 125 Volt AC receptacles

Material	Length	# of USB Ports	# of Single Receptacles	Color	Catalog Number
Steel	3 ft.	2	2	Ivory	<b>HBL20GB312UIV</b>
Steel	6 ft.	4	4	Ivory	<b>HBL20GB612UIV</b>
Aluminium	3 ft.	2	2	Aluminum	<b>HBLALU20GB312U</b>
Aluminium	6 ft.	4	4	Aluminum	<b>HBLALU20GB612U</b>
Non-metallic	6 ft.	4	8	Office White	<b>PT156112U</b>
Portable - with 6 ft cord and plug					
Steel	40 in.	2	4	Ivory	<b>HBL20C215UIV</b>
Non-metallic	36 in.	2	4	Office White	<b>PT153112UP</b>





**2017  
National Electrical  
Code Requirement**

**406.9 Receptacles in Damp or Wet Locations.**

**(B) Wet Locations.**

(1) 15 and 20 Ampere Receptacles in a Wet Location. 15 and 20 ampere, 125 and 250 volt receptacles installed in a wet location shall have an enclosure that is weatherproof whether or not the attachment plug cap is inserted. An outlet box hood installed for this purpose shall be listed, and shall be identified as “extra-duty.” Other listed products, enclosures, or assemblies providing weatherproof protection that do not utilize an outlet box need not be marked “extra-duty.” All 15 and 20 ampere, 125 and 250 volt nonlocking-type receptacles shall be listed weather-resistant type.

Exception: 15 and 20 ampere, 125 through 250 volt receptacles installed in a wet location and subject to routine high-pressure spray washing shall be permitted to have an enclosure that is weatherproof when the attachment plug is removed.

(2) Other Receptacles. All other receptacles installed in a wet location shall comply with (B)(2)(a) or (B)(2)(b).

(a) A receptacle installed in a wet location, where the product intended to be plugged into it is not attended while in use, shall have an enclosure that is weatherproof with the attachment plug cap inserted or removed.

(b) A receptacle installed in a wet location where the product intended to be plugged into it will be attended while in use (e.g., portable tools) shall have an enclosure that is weatherproof when the attachment plug is removed.

**Weather Resistant USB Charger Receptacles  
Type A&C**

Hubbell Wiring Device-Kellems announces its new weather-resistant USB charger receptacle. Now, being outdoors no longer means worrying about finding a charging source. Hubbell’s weather resistant USB receptacle offers a safe and reliable solution, conveniently expanding device charging to the outdoors.

These receptacles comply with Section 406.9 of the National Electrical Code. Whether it’s at a stadium, outdoor restaurant, amusement park, or a backyard patio, the new weather resistant line offers a safe, quick, and reliable way to charge portable electronics.

**Weather Resistant Receptacle Features**

- Meets Section 406.9 of NEC<sup>®</sup>
- 5 amp, 5 volt USB output
- Type A&C USB ports
- Power indicating green light



**Weather Resistant USB Charger Duplex Receptacles**

Description	Color	15A 125V	20A 125V
USB Charger Outlet:	Black	<b>USB15AC5BKWR</b>	<b>USB20AC5BKWR</b>
One Type A and one Type-C port configurations, high power 5 Amp, 5 Volt USB output, USB ports rated 10,000 cycles; Commercial Grade Tamper-Resistant duplex receptacle.	Brown	<b>USB15AC5WR</b>	<b>USB20AC5WR</b>
	Gray	<b>USB15AC5GYWR</b>	<b>USB20AC5GYWR</b>
	Ivory	<b>USB15AC5IWR</b>	<b>USB20AC5IWR</b>
	Light Almond	<b>USB15AC5LAWR</b>	<b>USB20AC5LAWR</b>
	White	<b>USB15AC5WWR</b>	<b>USB20AC5WWR</b>

*Note: Outdoor circuits should be GFCI protected per national and local electric codes.*

Ideal for new construction for offices. Pair the 4 port USB with surge suppression outlets for more charging ports and power.



Raceway USB power strips are the perfect charging solution for lab and workbench applications.

### USB Device Power Specifications

Device	Full Load Watts	No Load Watts	LED Indication	Max. USB Output	Smart IC on Data Pins†
Duplex Receptacle	25.0	.096	Always ON	5.0A	Yes
Duplex SNAP Receptacle	17.1	.070	ON w/USB Charge	3.0A	Yes
4 Port Charger	25.0	.000*	On w/Door Open	5.0A	Yes
2 Port Raceway Module	13.6	.050	ON w/USB Charge	2.4A	Yes
2 Port Switch Combo	11.8	.070	No LED	2.1A	Yes

Note: \*With door open and no device connected.

†Detects portable device and optimally sets data pins for maximum current output.

### Specifications

- Rating:
  - Duplex USB: 5 Amp, 5V DC
  - SNAPConnect®: 3 Amp, 5V DC
  - 4 Port USB: 5 Amp, 5V DC
  - Switch Combo: 2.1 Amp, 5V DC
  - Raceway USB: 2.4 Amp, 5V DC
- Input voltage: 125V AC, 60Hz
- Circuit feed-through 20 Amp, 125 Volt
- #14-10 AWG gauge wire terminals (SNAPConnect® duplex optional)
- Dielectric withstand: 1500V AC
- Operating temperature:
  - Maximum continuous 75°C;
  - Minimum -40°C (without impact)
- Complies with battery charging specification BC1.2
- Compatible with USB 1.1/2.0/3.0 devices, including Apple® products
- Complies with Part 15 of the FCC rules

Hubbell's USB Charger Duplex Receptacles provide both USB and electrical power in a standard single gang opening to provide more charging options.



### Typical Applications

Ideal for use in new construction and renovation to add the capacity for USB charging.

Especially suited for use in:

- Offices
- Hospitals
- Hotels
- Airports
- Schools
- Homes

Spring activated door protects USB ports and shuts off power when not in use.



### Designed for use with:

- Smartphones
- Smartwatches
- Tablets
- Digital readers
- Backup battery packs and power banks
- MP3 players
- GPS devices
- USB fans, lights and accessories
- Other USB compatible products



## Powered Seating Boxes

Hubbell's On-the-Go Powered Seating Boxes fulfill customers' need for power accessibility. As the use of electronic devices has increased, the demand for charging has followed.

Powered Seating Boxes provide an easy means of charging devices while meeting custom space requirements. The boxes can easily be attached to seating arrangements, conference tables, lecture halls, or anywhere convenient power is needed.



### Powered Seating Boxes

Description	Boxes per Unit*	Without Mounting Bracket	With Mounting Bracket
Powered Seating Box with USB Type A	1	<b>SP15USB1</b>	<b>SP15USB1B</b>
5 Amp, 5 volt USB output and a Commercial Grade Tamper-Resistant duplex receptacle;	2	<b>SP15USB2</b>	<b>SP15USB2B</b>
10 ft power and 5 ft connecting cords	3	<b>SP15USB3</b>	<b>SP15USB3B</b>
	4	<b>SP15USB4</b>	<b>SP15USB4B</b>

*Note: \*Special constructions are available with up to 4 boxes and up to 25 ft. of power cord. Contact your local Hubbell representative for more information. Options for USB Type-C and Combination Type A&C configurations and hospital grade receptacles are also available*

## Power Charging Pedestals

Hubbell's On-the-Go Power Charging Pedestals ship ready to install with four 20A 125V tamper-resistant USB Type A&C duplex receptacles. With a 3/4 inch NPT hub in the base and 36 inch long wire leads, the assembly will accommodate all installations when fed from the floor below. The pedestal can also be mounted and wired over one of Hubbell's flush round floor boxes or single gang rectangular floor boxes.

Our 2x8 inch wing-shaped aluminum extrusion has a sturdy 1/4 inch thick aluminum base plate with four pre-drilled countersunk holes for mounting. The shallow design allows the pedestals to be mounted between most transportation seating arrangements.



### Power Charging Pedestals

52.40 inches tall with (4) 20A 125V tamper-resistant USB Type A&C combination duplex receptacles

Description	Catalog Number
Hubbell Charging Power Stand	<b>HCPWRPED52GRY</b>
Hubbell Charging Power Stand, Light Kit	<b>HCPWRPED52LKGRY</b>

### Custom Branding

Custom branding/graphic artwork can be added to the Power Charging Pedestals with Light Kits at the factory. Contact your local Hubbell Territory Manager to special order a custom pedestal.

Description	Catalog Number
Hubbell Charging Power Stand, Light Kit with Custom Branding	<b>HCPWRPED52LKGRYxxx</b>

Custom Artwork Specifications	Maximum print area: 6.75" W x 9.13" H Preferred file formats: Adobe Illustrator, Vector File, Encapsulated Postscript and Layered PDF
-------------------------------	--

*Note: No Minimum Order Quantity for special order units.*