



**SERIES 24 LOK TAINER**

**WEIGHT**

.97g/cm (.087 oz/in)

**MATERIALS AND FINISH**

**HOUSING**

**Material:**

.025-in. (.64-mm) thick Beryllium Copper per QQ-C- 533 or .024-in. (.61-mm) thick Cold Rolled Steel per ASTM A-366

**Finish:**

See finish table on opposite page

**CAM**

**Material:**

Beryllium Copper per QQ-C-533

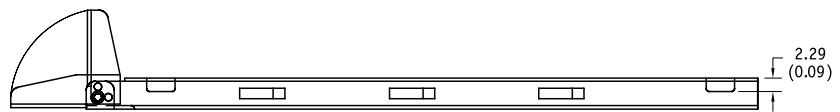
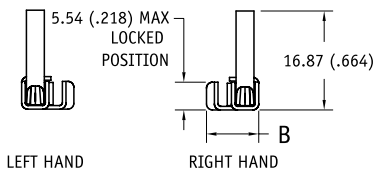
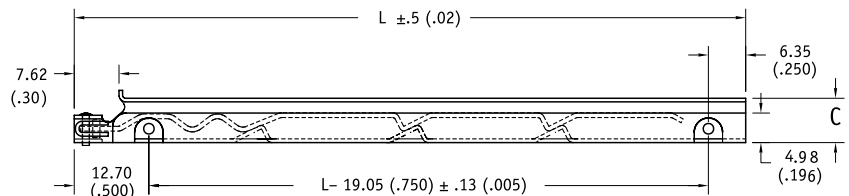
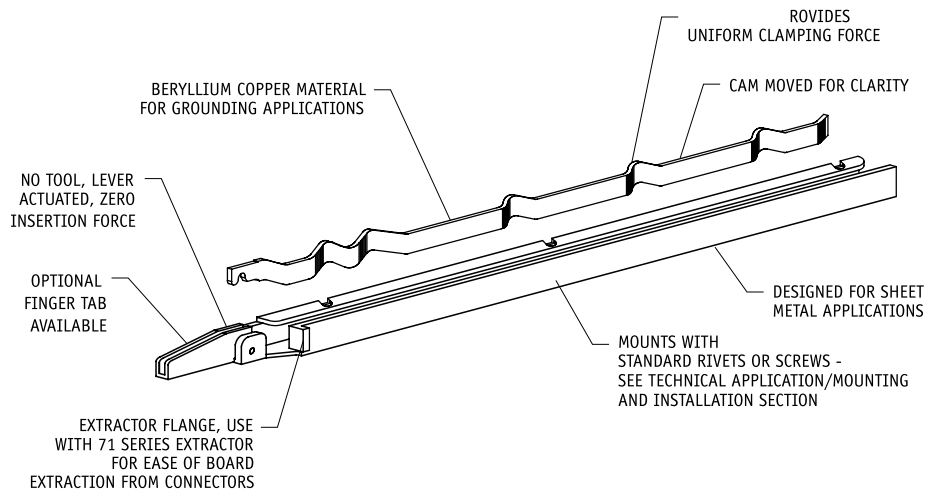
**LEVER**

**Material:**

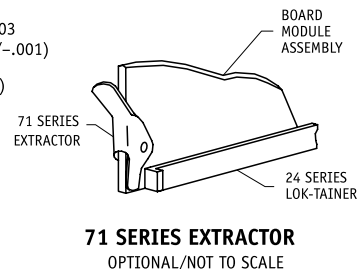
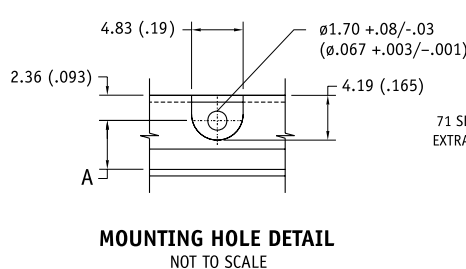
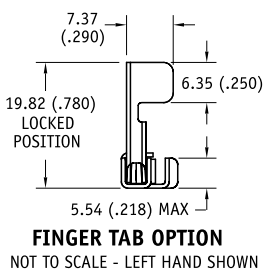
Cold Rolled Steel per ASTM A-366  
Note: Beryllium Copper lever furnished when housing is unplated

**Finish:**

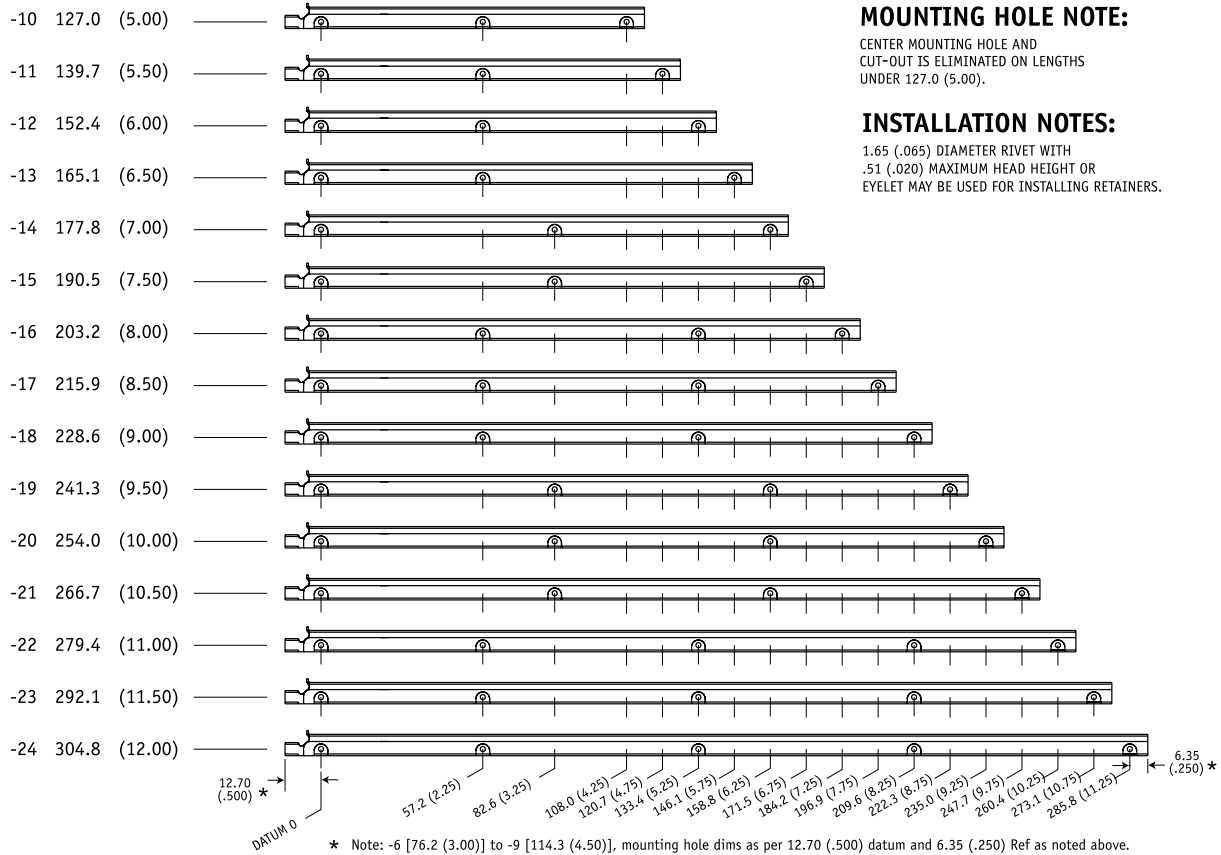
See finish table on opposite page



Units: mm(in)  
unless specified otherwise,  
.xx = ± .25, .x = ± .5  
(.xxx = ±.010, .xx = ± .02)



**MOUNTING HOLE DIMENSIONS**



**Part Number Code example: 24BX-3-10-6-L**

Series 24 Lever-actuated LOK-TAINER, Beryllium Copper housing with flange, 2.39-mm (.094-in.) thick board, 127.2-mm (5.00-in.) long, nickel plate finish and left hand lever action

**MATERIALS TABLE**

B	BERYLLIUM COPPER, 1/4H PER ASTM-B-194
S	STEEL PER ASTM-A-366

**BOARD THICKNESS TABLE**

DASH #	THICKNESS		
	A	B	C
+127/-000			
+005/-000			
-1	0.79 (.031)	4.58 (.180)	8.89 (.350)
-2	1.60 (.063)	4.58 (.180)	7.55 (.297)
-3	2.39 (.094)	5.34 (.210)	9.66 (.380)
			8.31 (.327)

**FINISH TABLE**

DASH #	FINISH
[blank]	SILVER PLATE PER QQ-S-365, TYPE III, GRADE A
-1	NONE
-2	EBANOL PER MIL-F-495 FOR BERYLLIUM COPPER PER MIL-C-13924 FOR STEEL
-3	CADMIUM PER QQ-P-416, TYPE 2, CLASS 2
-4	COPPER PLATE PER MIL-C-14550, CLASS 2
-5	GOLD PLATE PER MIL-G-45204, TYPE 1, GLASS 1
-6	NICKEL PLATE PER QQ-N-290, CLASS 1, GRADE G, BRIGHT
-7	ZINC PLATE CLEAR CHROMATE, PER ASTM-B-633, Fe/Zn 8
-8	ZINC PLATE YELLOW CHROMATE, PER ASTM-B-633, Fe/Zn 8

NOTE: NO FINISH (-1) NOT AVAILBLE WITH "S" STEEL MATERIAL

**Part Number Code**

**Series 24 LOK-TAINER Lever Actuated** T 24 B X - 2 - 10 - 5 - L

**Finger Tab**  
Finger tab \_\_\_\_\_ T  
None \_\_\_\_\_ [Blank]

**Housing Material**  
Beryllium Copper \_\_\_\_\_ B  
or select from Materials Table

**Extractor Flange**  
(Standard) \_\_\_\_\_ X  
None \_\_\_\_\_ [Blank]

**Board Thickness**  
1.60 (.063) PCB Thickness \_\_\_\_\_ 2  
or select from Board Thickness Table

**Length**  
Length in 12.7 (.50) increments \_\_\_\_\_ 6 [76.2 (3.00)]  
\_\_\_\_\_ to 24 [304.8 (12.00)]

**Finish**  
Gold Plate \_\_\_\_\_ 5  
or select from Finish Table

**Lever Action**  
Left hand \_\_\_\_\_ L  
Right hand \_\_\_\_\_ R

