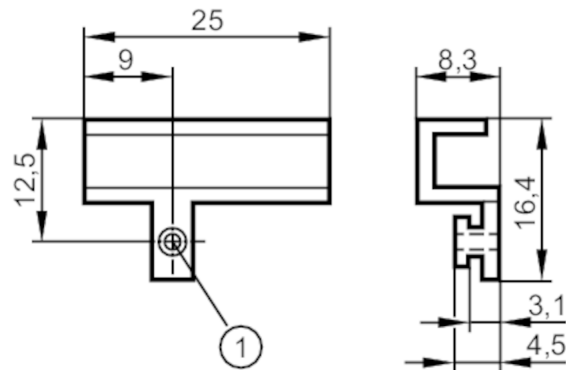


# E11891



## Mounting adapter for SMC pneumatic cylinders

ADAPT FOR CYL SMC CDQ2



1 Mounting screw SW 1.5

### Application

Design T-slot rail, high, for types, MKT

### Mechanical data

Weight [g]	3.8
Type of mounting	for series: SMC CDQ2
Dimensions [mm]	16.4 x 25 x 8.3
Materials	aluminium; screw: stainless steel

### Remarks

Pack quantity 1 pcs.