

2361483-1 ✓ ACTIVE

ICCON

TE Internal #: 2361483-1

Busbar Connectors, Board-to-Board, 1 Position, Printed Circuit Board, Mating Alignment, Bag & Box, Vertical, Vertical, Copper Alloy, Normal, ICCON

[View on TE.com >](#)



Connectors > Power Connectors > Power Busbar Connectors > Busbar Connectors



Connector System: **Board-to-Board**

Number of Positions: **1**

Connector & Contact Terminates To: **Printed Circuit Board**

Mating Alignment: **With**

PCB Mount Retention Type: **Solder Pad**

Features

Product Type Features

Connector & Housing Type	Receptacle
Connector System	Board-to-Board
Connector & Contact Terminates To	Printed Circuit Board

Configuration Features

Number of Positions	1
PCB Mount Orientation	Vertical
Mating & Unmating Configuration	Normal

Electrical Characteristics

Operating Voltage	48 VAC
-------------------	--------

Body Features

Bus Bar Contact Plating Material	Gold
----------------------------------	------

Contact Features

Contact Underplating Material Thickness	1.27 μ m[50 μ in]
---	---------------------------



Contact Mating Area Plating Material Thickness	.76 μm [30 μin]
Contact Shape & Form	Multiple Contact Band/CROWN BAND
Contact Underplating Material	Nickel
Contact Base Material	Copper Alloy
Contact Current Rating (Max)	200 A
Contact Length	4 mm[.157 in]

Termination Features

Termination Method to Printed Circuit Board	Surface Mount
---	---------------

Mechanical Attachment

Mating Alignment Type	Blindmate
Mating Alignment	With
PCB Mount Retention Type	Solder Pad
Bus Bar Mount Orientation	Vertical

Dimensions

Connector Height	10 mm[.394 in]
PCB Thickness (Recommended)	1.5 – 2 mm[.06 – .079 in]
Product Length	19.5 mm[.768 in]

Usage Conditions

Operating Temperature Range	-40 – 105 °C
-----------------------------	--------------

Operation/Application

Circuit Application	Power
---------------------	-------

Industry Standards

Agency/Standard	UL
-----------------	----

Packaging Features

Packaging Method	Bag & Box
------------------	-----------

Product Compliance

[For compliance documentation, visit the product page on TE.com>](#)

EU RoHS Directive 2011/65/EU	Compliant
EU ELV Directive 2000/53/EC	Compliant
China RoHS 2 Directive MIIT Order No 32, 2016	No Restricted Materials Above Threshold
EU REACH Regulation (EC) No. 1907/2006	



Current ECHA Candidate List: JAN 2023
 (233)
 Candidate List Declared Against: JAN 2023
 (233)
 Does not contain REACH SVHC

Halogen Content
 Low Halogen - Br, Cl, F, I < 900 ppm per homogenous material. Also BFR/CFR/PVC Free

Solder Process Capability
 Not reviewed for solder process capability

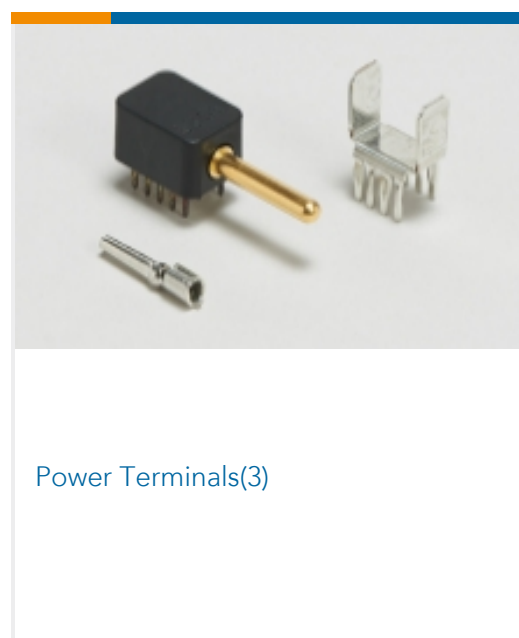
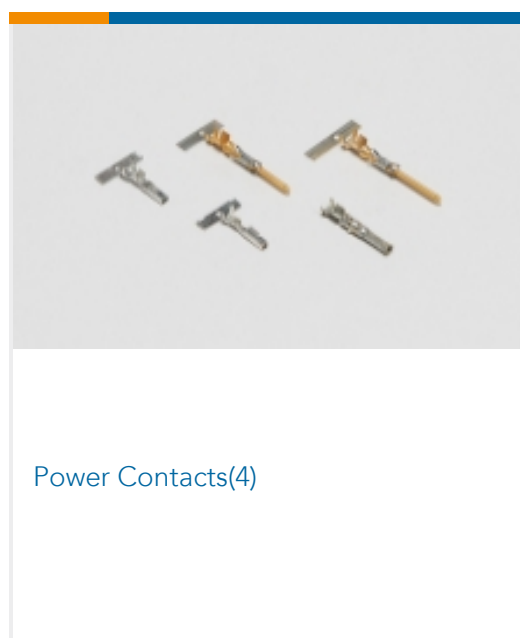
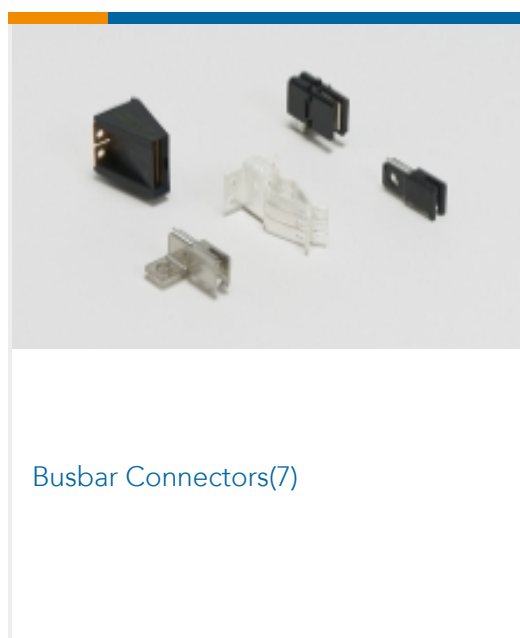
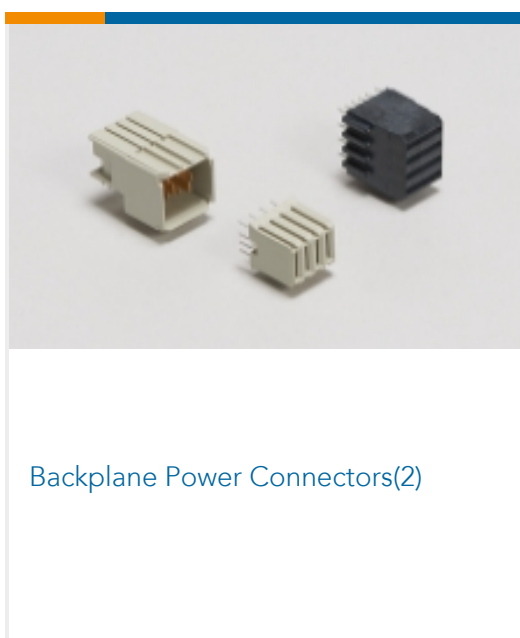
Product Compliance Disclaimer

This information is provided based on reasonable inquiry of our suppliers and represents our current actual knowledge based on the information they provided. This information is subject to change. The part numbers that TE has identified as EU RoHS compliant have a maximum concentration of 0.1% by weight in homogenous materials for lead, hexavalent chromium, mercury, PBB, PBDE, DBP, BBP, DEHP, DIBP, and 0.01% for cadmium, or qualify for an exemption to these limits as defined in the Annexes of Directive 2011/65/EU (RoHS2). Finished electrical and electronic equipment products will be CE marked as required by Directive 2011/65/EU. Components may not be CE marked. Additionally, the part numbers that TE has identified as EU ELV compliant have a maximum concentration of 0.1% by weight in homogenous materials for lead, hexavalent chromium, and mercury, and 0.01% for cadmium, or qualify for an exemption to these limits as defined in the Annexes of Directive 2000/53/EC (ELV). Regarding the REACH Regulation, the information TE provides on SVHC in articles for this part number is based on the latest European Chemicals Agency (ECHA) 'Guidance on requirements for substances in articles' posted at this URL: <https://echa.europa.eu/guidance-documents/guidance-on-reach>

Compatible Parts



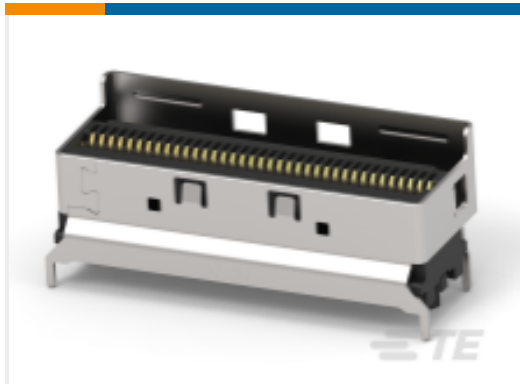
Also in the Series | ICCON





Rectangular Power Connectors(15)

Customers Also Bought



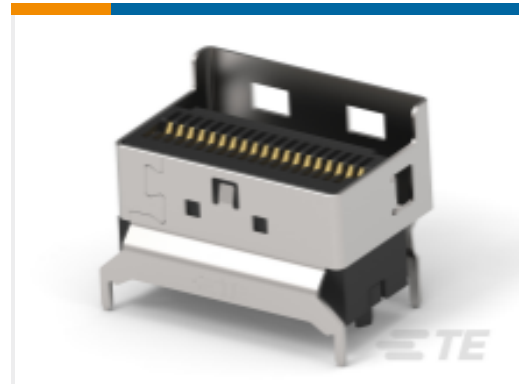
TE Part #1-2359992-5
Low Profile Slimline SAS 8X V/T REC



TE Part #2322144-2
MBXL R/A HDR STR 1ACP+8S+1ACP, HF



TE Part #2333799-3
RCPT ASSY, VERT, 168 POS, SLIVER 2.0



TE Part #2360221-5
Low Profile Slimline SAS 4X V/T REC



TE Part #2384218-3
SLIVER 2.0 4C+ vertical receptacle



TE Part #1-2327677-3
RECEPT ASSY, 140 POS, VERT, SLIVER 2.0



TE Part #1-6450843-6
MBXLE R/A HEADER 3ACP



TE Part #5-2354154-8
PCIEG4,SMT,V,164P,30u,ML,HT,TAB



TE Part #2397013-4
#4 RAPID LOCK PIN ASM, LOCK GROOVE, SM

Documents

Product Drawings

[ICCON INSERT SIZE 8.0mm SOCKET FLOAT SMT](#)

English

CAD Files

[3D PDF](#)

[3D](#)

Customer View Model

[ENG_CVM_CVM_2361483-1_2.2d_dxf.zip](#)



English

Customer View Model

[ENG_CVM_CVM_2361483-1_2.3d_igs.zip](#)

English

Customer View Model

[ENG_CVM_CVM_2361483-1_2.3d_stp.zip](#)

English

By downloading the CAD file I accept and agree to the [Terms and Conditions](#) of use.

Product Specifications

[Product Specification](#)

English

Product Environmental Compliance

[Product Compliance](#)

English

[Product Compliance](#)

English