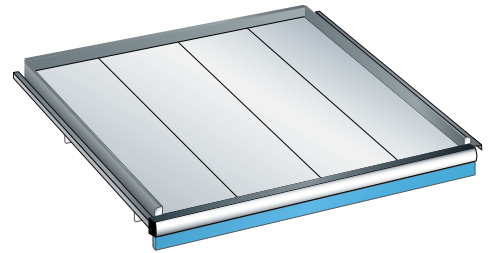


Pull-out shelf

Execution:

- Pull-out shelf: For storing heavy parts and devices. Precise, variable height mounting from 25: 25 mm in the column frame. The inserted slats allow the storage material to be stored flush with the handle bar and pulled out. Design: Sheet steel. Fins are made of sheet steel profile, Sendzimir galvanised.



Art. no.	50304 015
Brand	LISTA
Manufacturer Part Number	79.520.010
Height	75 mm
Effective width	765 mm
Effective depth	612 mm
Colour	Light blue RAL 5012
Load-carrying capacity per drawer	200 kg
Gross Weight	24.000 kg
Product Group	5AN