

GN 426.3 | Tubular handles

Steel



- 1
- 2
- 3
- 4
- 5
- 6
- 7
- 8
- 9
- 10
- 11
- 12
- 13
- 14
- 15
- 16
- 17
- 18

MATERIAL

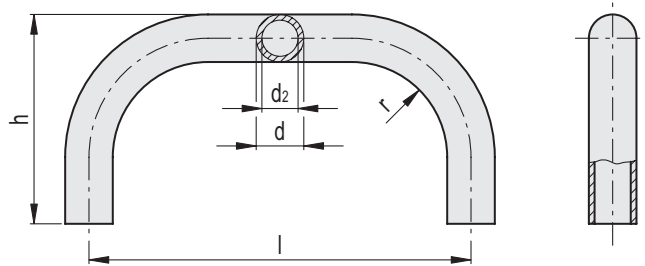
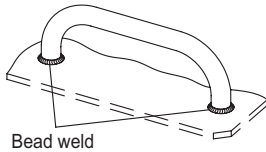
Steel tube, oiled.

MOUNTING

Welding.

SPECIAL EXECUTIONS ON REQUEST

Different lengths and bends.



Code	Description	d	l±1.5	d2	h±1.5	r	⚖️
GN.26890	GN 426.3-ST-20-150-A	20	150	14	90	40	288
GN.26891	GN 426.3-ST-20-200-A	20	200	14	90	40	340
GN.26892	GN 426.3-ST-20-250-A	20	250	14	90	40	400
GN.26893	GN 426.3-ST-20-300-A	20	300	14	90	40	455
GN.26894	GN 426.3-ST-20-400-A	20	400	14	90	40	565
GN.26881	GN 426.3-ST-25-200-A	25	200	19	110	50	560
GN.26883	GN 426.3-ST-25-250-A	25	250	19	110	50	640
GN.26885	GN 426.3-ST-25-300-A	25	300	19	110	50	720
GN.26887	GN 426.3-ST-25-400-A	25	400	19	110	50	890
GN.26889	GN 426.3-ST-25-500-A	25	500	19	110	50	1050
GN.26895	GN 426.3-ST-30-300-A	30	300	24	130	60	935
GN.26896	GN 426.3-ST-30-350-A	30	350	24	130	60	1040
GN.26897	GN 426.3-ST-30-400-A	30	400	24	130	60	1140
GN.26898	GN 426.3-ST-30-500-A	30	500	24	130	60	1340
GN.26899	GN 426.3-ST-30-600-A	30	600	24	130	60	1555

Lift & Pull handles