



VAC. CONTACTOR, 132KW/400V/AC-3 WITHOUT COIL AUXILIARY CONTACTS 2NO+2NC 3-POLE, SIZE S10 RAIL CONNECTIONS

Figure similar

product brand name	SIRIUS
Product designation	power contactor

General technical data:

Insulation voltage		
• Rated value	V	1 000
Degree of pollution		3
Surge voltage resistance Rated value	kV	8
Mechanical service life (switching cycles)		
• of the contactor typical		10 000 000
• of the contactor with added electronics-compatible auxiliary switch block typical		5 000 000
• of the contactor with added auxiliary switch block typical		10 000 000
Thermal short-time current restricted to 10 s	A	2 120
Protection class IP		
• on the front		IP00
• of the terminal		IP00
Equipment marking		
• acc. to DIN EN 61346-2		Q
• acc. to DIN EN 81346-2		Q

Main circuit:

Number of poles for main current circuit		3
Number of NC contacts for main contacts		0
Number of NO contacts for main contacts		3
Operating current		

<ul style="list-style-type: none"> • at AC-1 <ul style="list-style-type: none"> — at 400 V at ambient temperature 40 °C Rated value — up to 690 V at ambient temperature 40 °C Rated value — up to 690 V at ambient temperature 60 °C Rated value • at AC-3 <ul style="list-style-type: none"> — at 400 V Rated value — at 690 V Rated value • at AC-4 at 400 V Rated value 	A	330
<ul style="list-style-type: none"> • at AC-1 at 400 V Rated value • at AC-2 at 400 V Rated value • at AC-4 at 400 V Rated value 	kW	197
<ul style="list-style-type: none"> • at AC-1 <ul style="list-style-type: none"> — at 230 V at 60 °C Rated value — at 690 V at 60 °C Rated value — at 690 V Rated value • at AC-3 <ul style="list-style-type: none"> — at 230 V Rated value — at 400 V Rated value — at 500 V Rated value — at 690 V Rated value 	kW	113
	kW	340
	kW	340
	kW	85
	kW	151
	kW	189
	kW	265
Operating power for ≥ 200000 operating cycles at AC-4 <ul style="list-style-type: none"> • at 400 V Rated value • at 690 V Rated value 	kW	65
	kW	112
Operating frequency <ul style="list-style-type: none"> • at AC-3 maximum 	1/h	750
Control circuit/ Control:		
Type of voltage of the control supply voltage <ul style="list-style-type: none"> • Rated value 	Hz	AC/DC 40
Control supply voltage frequency 2 Rated value	Hz	60
Auxiliary circuit:		
Number of NC contacts <ul style="list-style-type: none"> • for auxiliary contacts <ul style="list-style-type: none"> — instantaneous contact 		2
Number of NO contacts <ul style="list-style-type: none"> • for auxiliary contacts 		

— instantaneous contact		2
Operating current at AC-15		
• at 230 V Rated value	A	6
• at 400 V Rated value	A	3
Operating current		
• at DC-12 at 220 V Rated value	A	1
• at DC-13 at 220 V Rated value	A	0.3
Operating current		
• at DC-12		
— at 60 V Rated value	A	6
— at 110 V Rated value	A	3
• at DC-13		
— at 24 V Rated value	A	10
— at 60 V Rated value	A	2
— at 110 V Rated value	A	1

UL/CSA ratings:		
Contact rating of the auxiliary contacts acc. to UL		A600 / Q600

Short-circuit:		
Design of the fuse link		
• for short-circuit protection of the main circuit		
— with type of assignment 1 required		fuse gL/gG: 500 A
— with type of assignment 2 required		fuse gL/gG: 500 A
• for short-circuit protection of the auxiliary switch required		fuse gL/gG: 10 A

Installation/ mounting/ dimensions:		
Mounting type		screw fixing
• Side-by-side mounting		Yes
Height	mm	210
Width	mm	145
Depth	mm	206
Required spacing		
• for grounded parts		
— at the side	mm	10

Connections/ Terminals:		
Type of electrical connection		
• for main current circuit		screw-type terminals
• for auxiliary and control current circuit		screw-type terminals
Type of connectable conductor cross-section		
• for AWG conductors for main contacts		2/0 ... 500 kcmil
• for auxiliary contacts		

- solid
- finely stranded with core end processing
- for AWG conductors for auxiliary contacts

	2x (0.5 ... 1.5 mm ²), 2x (0.75 ... 2.5 mm ²), max. 2x (0.75 ... 4 mm ²)
	2x (0.5 ... 1.5 mm ²), 2x (0.75 ... 2.5 mm ²)
	2x (20 ... 16), 2x (18 ... 14), 1x 12

Mechanical data:

Size of contactor	S10
-------------------	-----

Ambient conditions:

Installation altitude at height above sea level maximum	m	2 000
Ambient temperature		
• during operation	°C	-25 ... +60
• during storage	°C	-55 ... +80

Certificates/ approvals:

General Product Approval	Functional Safety/Safety of Machinery	Declaration of Conformity
--------------------------	---------------------------------------	---------------------------



[Type Examination](#)



Test Certificates	Shipping Approval	other
-------------------	-------------------	-------

[Special Test Certificate](#)



[Environmental Confirmations](#)

[other](#)

other

[Confirmation](#)

Further information

Information- and Downloadcenter (Catalogs, Brochures,...)

<http://www.siemens.com/industrial-controls/catalogs>

Industry Mall (Online ordering system)

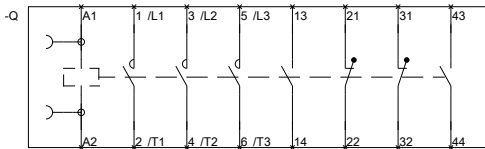
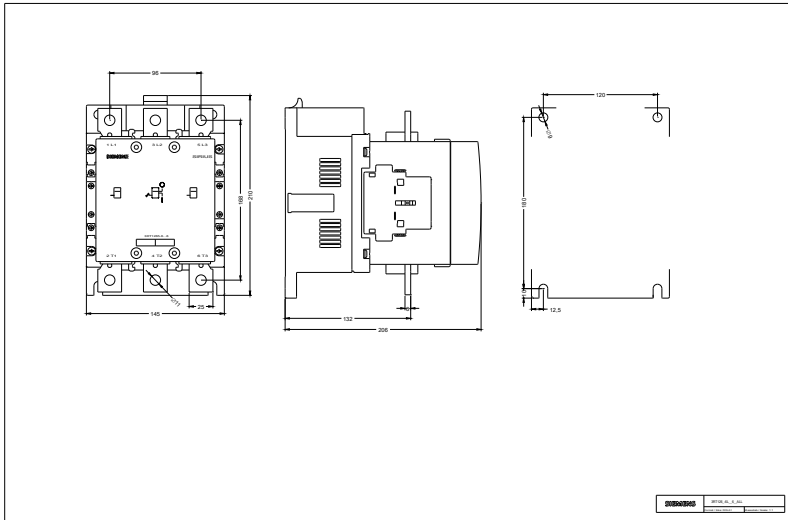
<http://www.siemens.com/industrymall>

Cax online generator

<http://support.automation.siemens.com/WW/CAXorder/default.aspx?lang=en&mlfb=3RT12656LA06>

Service&Support (Manuals, Certificates, Characteristics, FAQs,...)

<http://support.automation.siemens.com/WW/view/en/3RT12656LA06/all>



last modified:

11.03.2015

3RT106-.L.6.01_4_IEC.DXF
 3RT107-.L.6.01_4_IEC.DXF