

# Features

# Regulated Converters

- 5W power in SMD package
- 4:1 Input voltage range
- Efficiency up to 86%
- 1.6kVDC/1min isolation
- Regulated output
- -40°C to +50°C at full load
- Continuous short circuit protected



## R5M

**5 Watt  
SMD  
Single & Dual  
Output**



### Description

The R5M is an isolated 5W DC/DC converter in a compact SMD package available with 4:1 inputs covering 12, 24 and 48V rails providing single or dual regulated, short-circuit protected outputs. There is no minimum load requirement. Isolation is 1.6kVDC/1min, and the operating temperature is from -40°C up to +50°C without derating. Class A and Class B EMC conformity requires only a few external components. Standard packaging is tube.

### Selection Guide

Part Number	Input Voltage Range <sup>(1)</sup> [VDC]	nom. Output Voltage [VDC]	Output Current [mA]	Efficiency typ. <sup>(2)</sup> [%]	max. Capacitive Load <sup>(3)</sup> [µF]
R5M-xx3.3S/SMD	9-36, 18-75	3.3	1000	77	4400
R5Mxx05S/SMD	9-36, 18-75	5	1000	81	2200
R5Mxx09S/SMD	9-36, 18-75	9	555	82	1470
R5M-xx12S/SMD	9-36, 18-75	12	420	84-85	1220
R5M-xx15S/SMD	9-36, 18-75	15	333	85-86	1000
R5M-xx24S/SMD	9-36, 18-75	24	210	82	470
R5M-xx05D/SMD	9-36, 18-75	±5	±500	82	±1000
R5M-xx12D/SMD	9-36, 18-75	±12	±210	84	±680
R5M-xx15D/SMD	9-36, 18-75	±15	±168	85	±440

#### Notes:

Note1: Refer to "Input Voltage Range"

Note2: Efficiency is tested at nominal input and full load at +25°C ambient

Note3: Max Cap Load is tested at nominal input and full resistive load

### Model Numbering



### Specifications (measured @ Ta= 25°C, nom. Vin, full load and after warm-up unless otherwise stated)

BASIC CHARACTERISTICS				
Parameter	Condition	Min.	Typ.	Max.
Input Voltage Range	nom. V <sub>IN</sub> = 24VDC	9VDC	24VDC	36VDC
	nom. V <sub>IN</sub> = 48VDC	18VDC	48VDC	75VDC
Input Surge Voltage	1 second max.	nom. V <sub>IN</sub> = 24VDC		50VDC
		nom. V <sub>IN</sub> = 48VDC		100VDC

continued on next page

**Specifications** (measured @  $T_a = 25^\circ\text{C}$ , nom.  $V_{in}$ , full load and after warm-up unless otherwise stated)

### BASIC CHARACTERISTICS

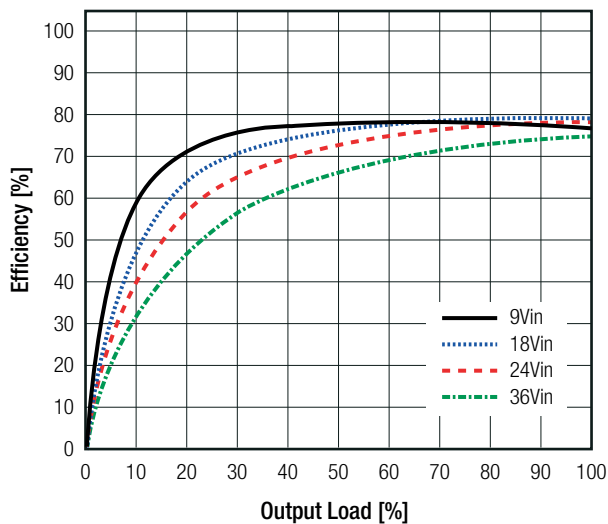
Parameter	Condition	Min.	Typ.	Max.
Quiescent Current	nom. $V_{in} = 24\text{VDC}$		30mA	
	nom. $V_{in} = 48\text{VDC}$		15mA	
Start-up time	power up, CTRL ON/OFF		10ms	20ms
ON/OFF CTRL <sup>(4)</sup>	DC-DC ON		open or high impedance	
	DC-DC OFF	2mA	3mA	4mA
Standby Current	DC-DC OFF		2.5mA	
Internal Operating Frequency		100kHz		
Output Ripple and Noise	20MHz BW		50mVp-p	
Reflected Back Ripple Current	with external components	nom. $V_{in} = 24\text{VDC}$		20mA <sub>p-p</sub>
		nom. $V_{in} = 48\text{VDC}$		15mA <sub>p-p</sub>

**Notes:**

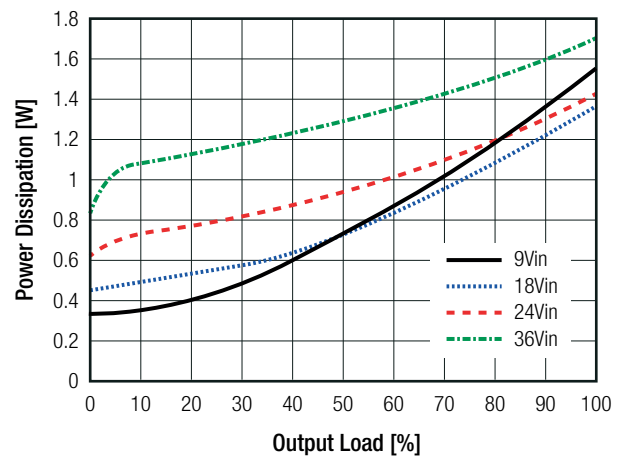
Note4: Refer to "ON/OFF CTRL"

#### R5M-2405S

Efficiency vs. Load

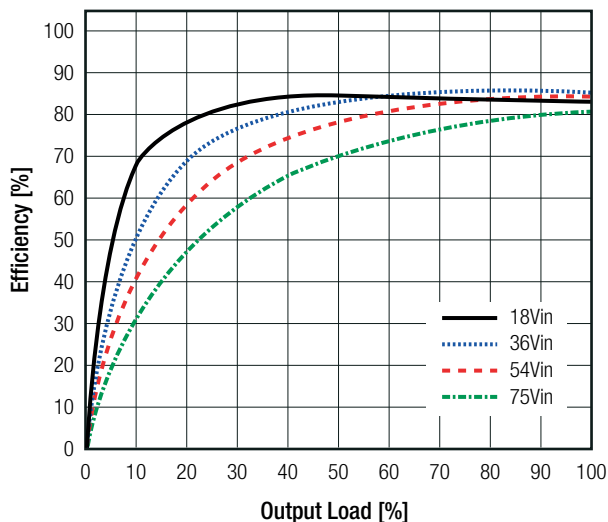


Power Dissipation vs. Load

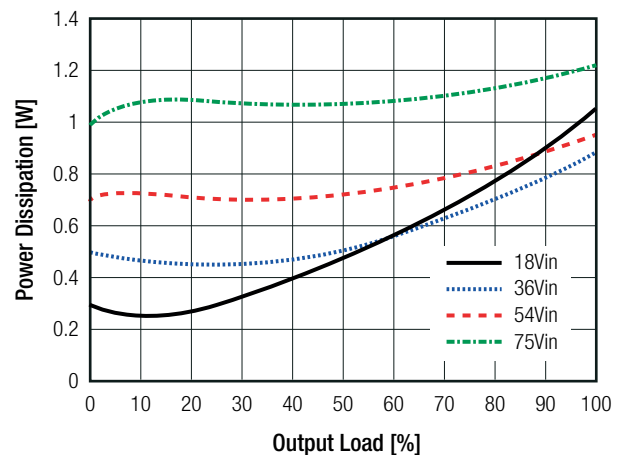


#### R5M-4812S

Efficiency vs. Load

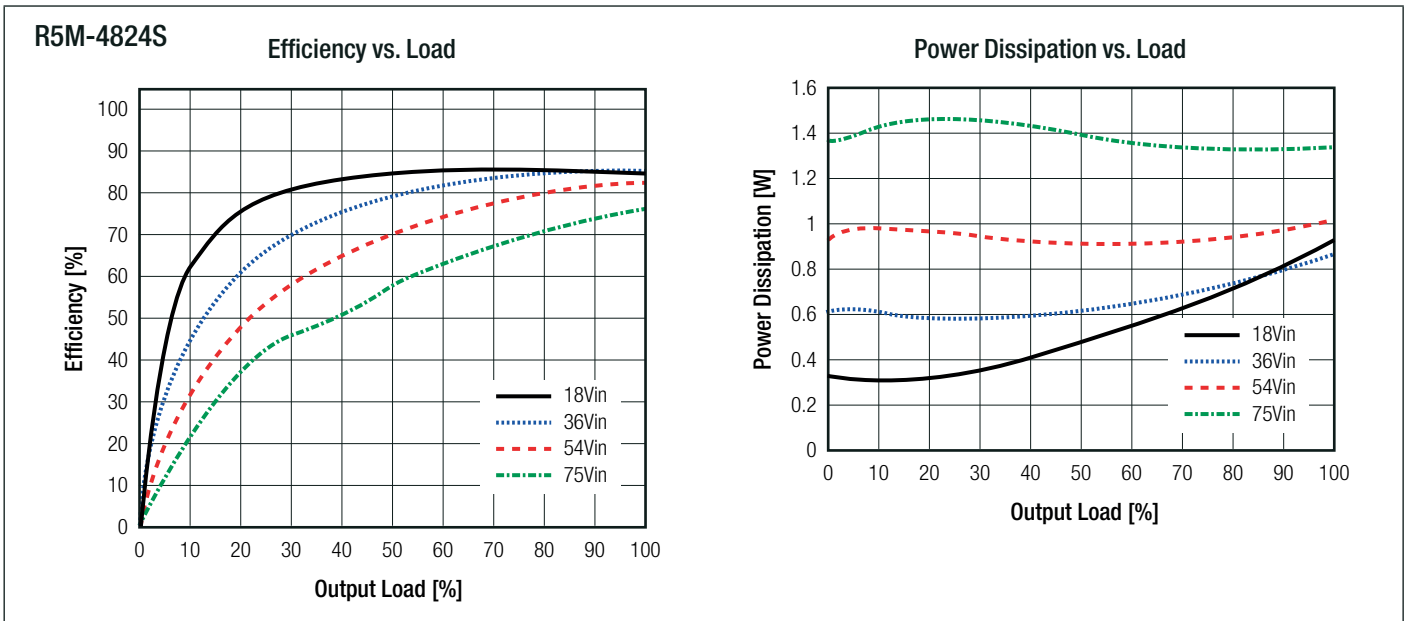


Power Dissipation vs. Load

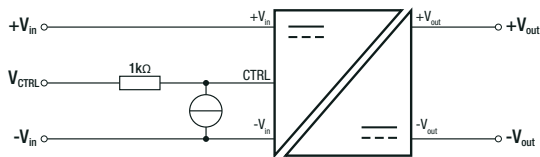


continued on next page

**Specifications** (measured @ Ta= 25°C, nom. Vin, full load and after warm-up unless otherwise stated)



### ON/OFF CTRL



DC-DC ON	Open or high impedance
DC-DC OFF	2.0mA to 4.0mA max.

### REGULATIONS

Parameter	Condition	Value	
Output Accuracy		±1.0% max.	
Line Regulation	low line to high line, full load	±0.2% max.	
Load Regulation	0% to 100% load	single	1% max.
		dual	1% max.
	10% to 90% load	single	0.5% max.
		dual	0.8% max.
Cross Regulation	asymmetrical 25% / 100% load	±5% max.	
Transient Response Recovery Time	25% load step change	±500µs typ.	

### PROTECTIONS

Parameter	Type	Value
Short Circuit Protection (SCP)		continuous, auto recovery
Isolation Voltage <sup>(5)</sup>	I/P to O/P	1 minute
Isolation Resistance	I/P to O/P, V <sub>ISO</sub> = 500VDC	1GΩ min.
Isolation Capacitance	I/P to O/P, 100kHz/0.1V	50pF typ.

**Notes:**

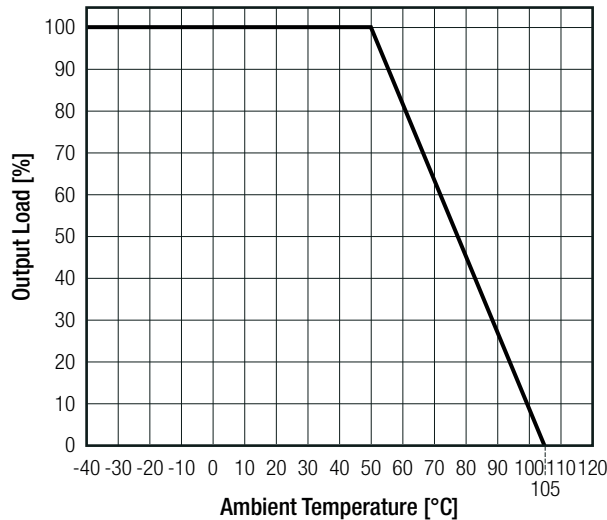
Note5: This power module is not internally fused. An input line fuse must always be used  
 Recom suggests: 24Vin=T1.25A; 48Vin=T0.63A slow blow

**Specifications** (measured @ Ta= 25°C, nom. Vin, full load and after warm-up unless otherwise stated)

ENVIRONMENTAL		
Parameter	Condition	Value
Operating Temperature Range	with derating	-40°C to +105°C
	without derating	-40°C to +50°C
Maximum Case Temperature	measured at "tc point"	+105°C
Operating Humidity	non-condensing	5% - 95% RH max.
Thermal Shock		according to MIL-STD-810F
Vibration		according to MIL-STD-810F
MTBF	according to MIL-HDBK-217F, G.B. +25°C	2959 x 10 <sup>3</sup> hours

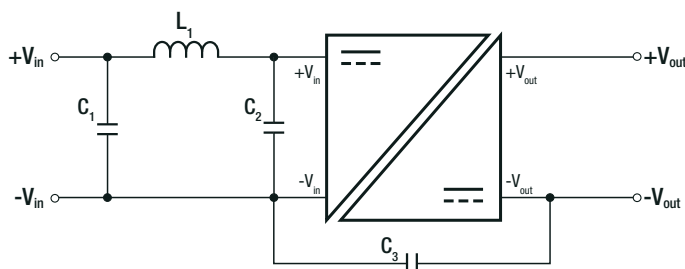
**Derating Graph**

(@ Chamber and natural convection 0.1m/s)



SAFETY AND CERTIFICATIONS		
Certificate Type (Safety)	File Number	Standard
RoHS2		RoHS-2011/65/EU + AM-2015/863
EMC Compliance	Condition	Standard / Criterion
Electromagnetic compatibility of multimedia equipment – Emission Requirements	with external filter refer to "EMC Filtering"	EN55032, Class A and B

**EMC Filtering Suggestions according to EN55032**



**Class A Component List**

Model	C1	C2	C3	L1
R5M-24xxS	10µF	N/A	330pF	22µH
R5M-48xxS	2.2µF	2.2µF	330pF	68µH

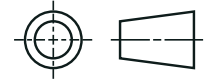
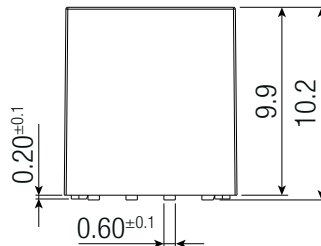
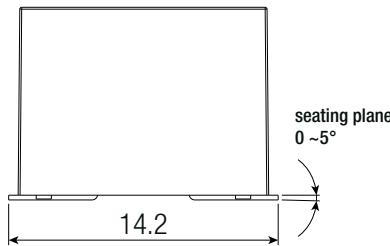
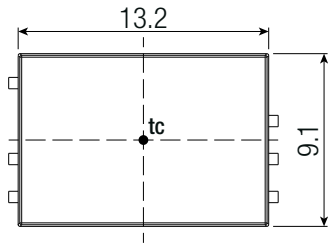
**Class B Component List**

Model	C1	C2	C3	L1
R5M-24xxS	10µF	N/A	680pF	22µH
R5M-48xxS	4.7µF	2.2µF	680pF	68µH

**Specifications** (measured @ Ta= 25°C, nom. Vin, full load and after warm-up unless otherwise stated)

DIMENSION AND PHYSICAL CHARACTERISTICS		
Parameter	Type	Value
Material	baseplate/case	black plastic (UL94 V-0)
	potting	silicone (UL94 V-0)
Dimension (LxWxH)		14.2 x 9.1 x 10.2mm
Weight		2.7g typ.

Dimension Drawing standard "/SMD" version (mm)

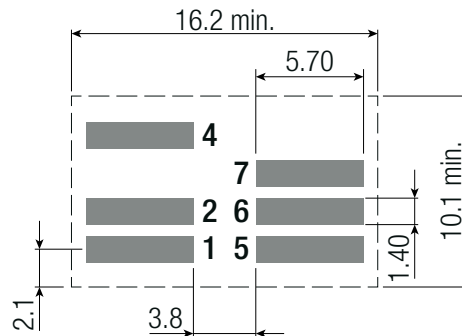
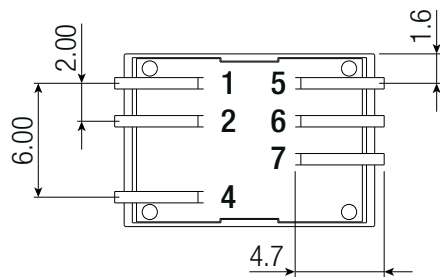


**Pinning Information**

Pin #	Single	Dual
1	+Vin	+Vin
2	-Vin	-Vin
4	CTRL	CTRL
5	NC	-Vout
6	-Vout	COM
7	+Vout	+Vout

NC= no connection

**Recommended Footprint Details**



Tolerance:  
xx.x = ±0.5mm  
xx.xx = ±0.25mm

PACKAGING INFORMATION		
Parameter	Type	Value
Packaging Dimension (LxWxH)	tube	218.0 x 17.2 x 19.9mm
Packaging Quantity		20pcs
Storage Temperature Range	non-condensing	-55°C to +125°C
Storage Humidity		5% to 95% RH max.
Moisture Sensitive Level	MSL peak temp. <sup>(6)</sup>	Level 2

**Notes:**

Note6: The Moisture Sensitivity Level rating is according to the JEDEC industry standard classifications and peak solder temperature

The product information and specifications may be subject to changes even without prior written notice. The product has been designed for various applications; its suitability lies in the responsibility of each customer. The products are not authorized for use in safety-critical applications without RECOM's explicit written consent. A safety-critical application is an application where a failure may reasonably be expected to endanger or cause loss of life, inflict bodily harm or damage property. The applicant shall indemnify and hold harmless RECOM, its affiliated companies and its representatives against any damage claims in connection with the unauthorized use of RECOM products in such safety-critical applications.