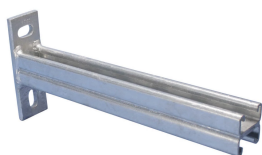




## STRUT CANTILEVER ARM TYPE CC, SLOTTED, HD, 17.72"

### CATALOG NUMBER

**KCC25H0450HD**



### CERTIFICATIONS



### FEATURES

Welded back to back on flat mounting plate

### PRODUCT ATTRIBUTES

Article Number: 311815

Strut Type: CC (41 x 41 mm)

Material: Steel

Finish: Hot-Dip Galvanized

Length: 450 mm

Height: 133 mm

Width: 50 mm

A: 22 mm

B: 41 mm

C: 41 mm

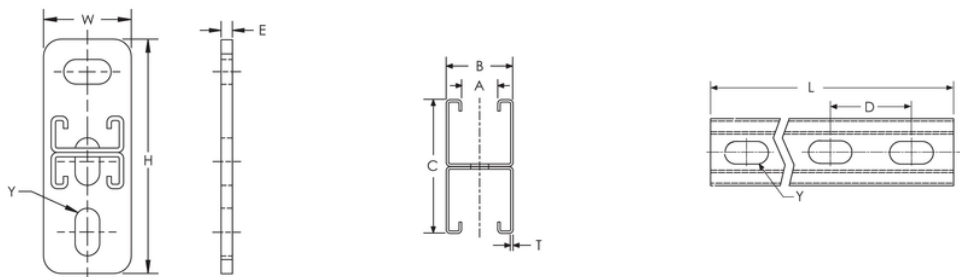
D: 50 mm

E: 8 mm

Y: 14 x 27 mm

Thickness: 2.50 mm

## DIAGRAMS



## WARNING

nVent products shall be installed and used only as indicated in nVent's product instruction sheets and training materials. Instruction sheets are available at [www.nvent.com](http://www.nvent.com) and from your nVent customer service representative. Improper installation, misuse, misapplication or other failure to completely follow nVent's instructions and warnings may cause product malfunction, property damage, serious bodily injury and death and/or void your warranty.

### Noord-Amerika

+1.800.753.9221

Optie 1 - de Zorg van de Klant

Optie 2 - Technische Steun

### Europa

Nederland:

+31 800-0200135

Frankrijk:

+33 800 901 793

### Europa

Duitsland:

800 1890272

Andere Landen:

+31 13 5835404

### APAC

Shanghai:

+ 86 21 2412 1618/19

Sydney:

+61 2 9751 8500



Onze krachtige portefeuille van merken:

[nVent.com](http://nVent.com) CADDY ERICO HOFFMAN RAYCHEM SCHROFF TRACER

© nVent 2022. Alle nVent tekens en emblemen worden bezeten of door de nVent Diensten GmbH of zijn filialen vergunning gegeven. Alle andere handelsmerken zijn het bezit van hun respectieve eigenaars.

nVent reserves het recht specificaties zonder bericht te veranderen.