

## Stepped clamps



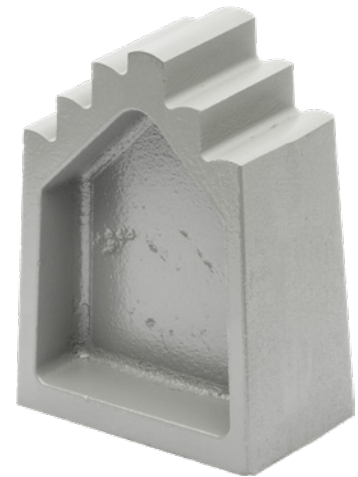
### Application:

For supporting adjustable clamps.

### Execution:

- Machine casting
- Painted
- Contact surface and step face-milled
- With clamping stages, each with a height difference of 7.5 mm

<b>Art. no.</b>	<b>26145 010</b>
<b>Brand</b>	AMF
<b>Manufacturer Part Number</b>	71365
<b>Height</b>	50 mm
<b>Min. step height</b>	12.5 mm
<b>Width</b>	42.5 mm
<b>DIN</b>	6318
<b>Gross Weight</b>	0.494 kg
<b>Product Group</b>	260



### EAN

4020772071363