

grinding and control vices, type PL-G

Actuated via trapezoidal spindle

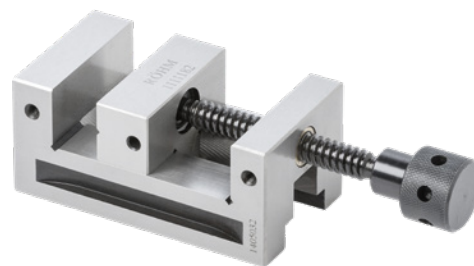


Application:

For horizontal, vertical and lateral grinding and inspection tasks.

Execution:

- Made of alloyed tool steel.
- Hardened and precision-ground.
- Perpendicularity tolerance 0.005 mm/100 mm (base area to fixed jaw clamping surfaces).
- Ref. no. 060-088, parallelism tolerance 0.002 mm/100 mm (base surface to upper guide plate).
- Horizontally and vertically ground vee block.
- Perpendicularity tolerance 0.005 mm/100 mm (base surface to fixed jaw clamping surfaces), ref. no. 110-150 parallelism tolerance 0.005 mm/100 mm (base surface to upper guide plate).



Delivery:

1x PL-G grinding and control vice

Art. no.	28604 088
Brand	RÖHM
Manufacturer Part Number	1111184
Model	PL-G 88
Prism countersunk horizontally and vertically	Yes
Jaws width	88 mm
Jaws height	40 mm
Height 2	48 mm
Clamping width	125 mm
Height	88 mm
Body length	250 mm
Length 2	40 mm
Length 3	50 mm
Gross Weight	10.650 kg
Product Group	202

EAN

4019208208343

