



Charging Inlets

TE Internal #: 9-2177810-2

Automotive Terminals, Pin, Pin Diameter .236 in [6 mm], 11 AWG

Wire Size, 4 mm² Wire Size, Locking Clean Body, Charging Inlets

[View on TE.com >](#)

Terminals & Splices > Automotive Terminals



Terminal Type: Pin

Mating Pin Diameter: 6 mm [.236 in]

Terminal Transmits: 0 – 24 A (Low Power)

Wire Size: 4 mm²

Features

Product Type Features

Receptacle Style	180°
Sealable	No
Primary Locking Feature	Clean Body

Contact Features

Contact Size	6mm
Contact Fabrication	Screw Machine
Terminal Type	Pin
Mating Pin Diameter	6 mm[.236 in]
Interface Plating	Silver (Ag)
Contact Termination Area Plating Material	Silver (Ag)

Termination Features

Termination Method to Wire & Cable	Crimp
Product Terminates To	Wire

Dimensions

Wire Size	4 mm ²
-----------	-------------------



Wire Size Search	11 AWG
Wire Insulation Diameter	3.4 – 3.7 mm [.134 – .146 in]

Usage Conditions

Insulation Option	Uninsulated
Operating Temperature (Max)	80 °C, 85 °C, 90 °C, 100 °C [176 °F][185 °F] [194 °F][212 °F]
Operating Temperature Range	-40 – 100 °C [-40 – 212 °F]

Operation/Application

Compatible With Wire Base Material	Copper
------------------------------------	--------

Industry Standards

Agency/Standard	LV214
-----------------	-------

Packaging Features

Packaging Method	Box
Packaging Quantity	240

Other

Terminal Transmits	0 – 24 A (Low Power)
--------------------	----------------------

Product Compliance

[For compliance documentation, visit the product page on TE.com>](#)

EU RoHS Directive 2011/65/EU	Compliant with Exemptions
EU ELV Directive 2000/53/EC	Compliant with Exemptions
China RoHS 2 Directive MIIT Order No 32, 2016	Restricted Materials Above Threshold
EU REACH Regulation (EC) No. 1907/2006	Current ECHA Candidate List: JUNE 2022 (224) Candidate List Declared Against: JUNE 2022 (224) SVHC > Threshold: Pb (2.5% in Component Part) Article Safe Usage Statements: Do not eat, drink or smoke when using this product. Wash thoroughly after handling. Recycle if possible and dispose of the article by following all applicable governmental regulations relevant to your geographic location.
Halogen Content	BFR/CFR/PVC Free, but Br/Cl >900 ppm in other sources.
Solder Process Capability	Not reviewed for solder process capability

Product Compliance Disclaimer

This information is provided based on reasonable inquiry of our suppliers and represents our current actual knowledge based on the information they provided. This information is subject to change. The part numbers that TE has identified as

EU RoHS compliant have a maximum concentration of 0.1% by weight in homogenous materials for lead, hexavalent chromium, mercury, PBB, PBDE, DBP, BBP, DEHP, DIBP, and 0.01% for cadmium, or qualify for an exemption to these limits as defined in the Annexes of Directive 2011/65/EU (RoHS2). Finished electrical and electronic equipment products will be CE marked as required by Directive 2011/65/EU. Components may not be CE marked. Additionally, the part numbers that TE has identified as EU ELV compliant have a maximum concentration of 0.1% by weight in homogenous materials for lead, hexavalent chromium, and mercury, and 0.01% for cadmium, or qualify for an exemption to these limits as defined in the Annexes of Directive 2000/53/EC (ELV). Regarding the REACH Regulation, the information TE provides on SVHC in articles for this part number is based on the latest European Chemicals Agency (ECHA) 'Guidance on requirements for substances in articles' posted at this URL: <https://echa.europa.eu/guidance-documents/guidance-on-reach>

Compatible Parts



TE Part # 2177786-1
5POS, MIXED,HSG, IEC62196-2 TYPE 2,BK



TE Part # 2177786-2
7POS, MIXED,HSG, IEC62196-2 TYPE 2,BK



TE Part # 2177786-3
5POS, MIXED,HSG, IEC62196-2 TYPE 2,Top




TE Part # 2177786-5
5POS, MIXED,HSG, IEC62196-2 TYPE 2,Left

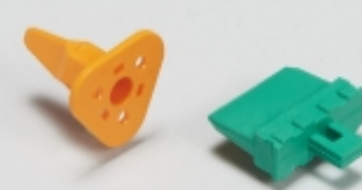


TE Part # 2177786-7
5POS, MIXED,HSG, IEC62196-2 TYPE 2,right


Also in the Series | Charging Inlets




Automotive Connector Caps & Covers (30)




Automotive Connector Locks & Position Assurance(3)



Automotive Housings(14)




Automotive Seals & Cavity Plugs(4)



Automotive Terminals(14)



Crimp Wire Pins, Tabs & Ferrules(6)



Electric, Hybrid & Fuel Cell Cable Assemblies(48)



High Voltage Wire Processing Equipment(18)

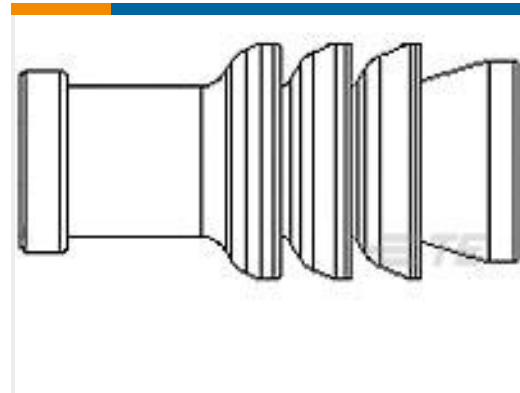


Other Automotive Connector Accessories(2)

Customers Also Bought



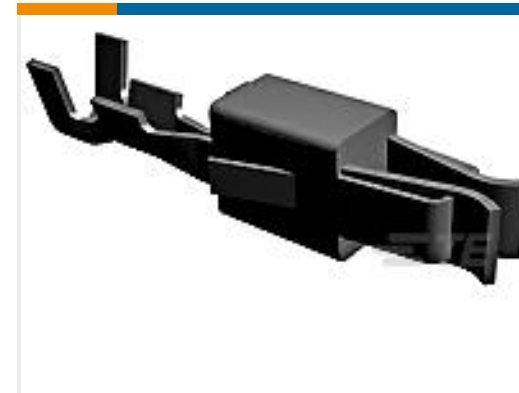
TE Part #2141155-2
PROTEC. COVER 8MM HV,90DEG



TE Part #963143-1
MQS BLINDSTOPFEN



TE Part #5-965906-5
MQS, RECEPTACLE AND TAB



TE Part #927771-6
JPT REC 2.8 Contact SRC Ag



TE Part #1241374-1
AMP MCP 1.5K, CONTACT



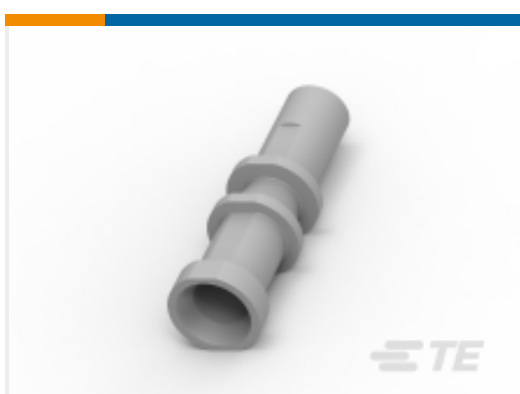
TE Part #7-1452665-3
MCON 1.2 LL REC SWS AG



TE Part #2306177-1
DIA 8MM,PIN TERMINAL



TE Part #9-2177815-2
PIN DIA 3.6, L/N, ASSY



TE Part #1534554-1
FIB OPTIC MALE CONT

Documents

Product Drawings

[PIN DIA 6.0, L/N, ASSY](#)

English

CAD Files

[3D PDF](#)

[3D](#)

Customer View Model

[ENG_CVM_CVM_9-2177810-2_D.2d_dxf.zip](#)

9-2177810-2

Automotive Terminals, Pin, Pin Diameter .236 in [6 mm], 11 AWG Wire Size, 4 mm² Wire Size, Locking Clean Body, Charging Inlets



English

Customer View Model

[ENG_CVM_CVM_9-2177810-2_D.3d_igs.zip](#)

English

Customer View Model

[ENG_CVM_CVM_9-2177810-2_D.3d_stp.zip](#)

English

By downloading the CAD file I accept and agree to the [Terms and Conditions](#) of use.