



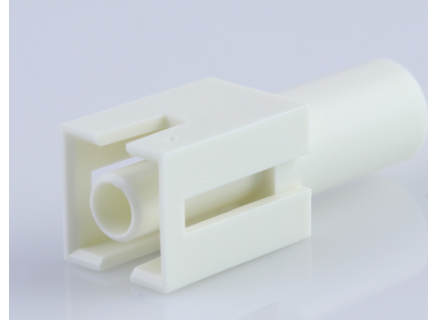
Part Number : [366440001](#)

Product Description : 2.13mm Diameter MLX Pin and Socket Receptacle, 1 Circuit, PA Polyamide Nylon 6/6 94V-2, Glow-Wire Capable

Series Number : 36644

Status : Active

Product Category : Connector Housings



Documents & Resources

Drawings

[Drawing 366440001_sd.pdf](#)

[Packaging Design Drawing PK-42022-XX-001.pdf](#)

3D Models and Design Files

[3D Model 366440001_stp.zip](#)

Specifications

[Product Specification PS-36644-001-001.pdf](#)

Product Environment Compliance

Compliance

GADSL/IMDS	Not Relevant
China RoHS	
EU ELV	Not Relevant
Low-Halogen Status	Not Relevant
REACH SVHC	Not Contained per D(2023)3788-DC (14 Jun 2023)
EU RoHS	Compliant per EU 2015/863

Multiple Part Product Compliance Statements

- Eu RoHS
- REACH SVHC
- Low-Halogen

Multiple Part Industry Compliance Documents

- IPC 1752A Class C
- IPC 1752A Class D

- Molex Product Compliance Declaration
- IEC-62474
- chemSHERPA (xml)

EU RoHS Certificate of Compliance

Part Details

General

Status	Active
Category	Connector Housings
Series	36644
Description	2.13mm Diameter MLX Pin and Socket Receptacle, 1 Circuit, PA Polyamide Nylon 6/6 94V-2, Glow-Wire Capable
Application	Power, Wire-to-Wire
Comments	<p>This Molex product is manufactured from material that has the following ratings, tested by independent agencies: a) A Glow Wire Ignition Temperature (GWIT) of at least 775 deg C per IEC 60695-2-13. b) A Glow Wire Flammability Index (GWFI) above 850 deg C per IEC 60695-2-12 and hence complies with the requirements set out in the International Standard IEC 60335-1 5th edition - household and similar electrical appliances - safety, section 30 Resistance to heat and fire. The customers using this product must determine its suitability for use in their particular application through testing or other acceptable means as described in end-product glow-wire flammability test standard IEC 60695-2-11 and any applicable product end-use standard(s). If it is determined during the customer's evaluation of suitability, that higher performance is required, please contact Molex for possible product options.</p>
Product Family	MLX Power Connectors
Product Name	MLX
UPC	800756935140

Agency

CSA	LR19980
UL	E29179

Electrical

Current - Maximum per Contact	20.0A
-------------------------------	-------

Physical

Circuits (maximum)	1
Color - Resin	Natural
Flammability	94V-2
Gender	Receptacle
Glow-Wire Capable	Yes
Keying to Mating Part	None
Lock to Mating Part	Yes
Material - Resin	Nylon
Net Weight	0.870/g
Number of Rows	1
Packaging Type	Bag
Panel Mount	No
Pitch - Mating Interface	N/A
Pitch - Termination Interface	N/A
Polarized to Mating Part	Yes
Stackable	No
Temperature Range - Operating	-55° to +105°C

Mates With / Use With

Mates with Part(s)

Description	Part Number
MLX Plug Housings	<u>36643</u>
2.13mm Diameter MLX Power Crimp Housing Plugs	<u>42021</u>

Use with Part(s)

Description	Part Number
-------------	-------------

MLX Male Crimp Terminals	<u>42023</u>
MLX Female Crimp Terminals	<u>42024</u>

This document was generated on Sep 26, 2023