

CE-GR

ABS Enclosures



**CE-TEK's "value for money"
electrical & electronic enclosure range**

In partnership with



CE-GR

Low cost ABS Enclosures

Overview and Key Features

- Manufactured from ABS Techno-polymer, which is strong and light weight
- Captive steel or polymer screws with universal cross/cut head
- Protection class: IP65 - dustproof and protection against low pressure jets of water
- -15°C to +60°C operating temperature
- Available with opaque or transparent lids
- Over 40 different sizes and variations in stock
- Halogen Free - no toxic fumes are given off in the event of a fire unlike PVC enclosures.



Applications

The GR range is a fantastic low cost enclosure for housing electronic and electrical equipment of high value. The GR range is popular with Electricians, Hobbyists, OEM's, Computer Network Engineers and Industrial Control Engineers.



Opaque Lids



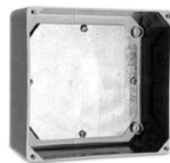
Transparent Lids



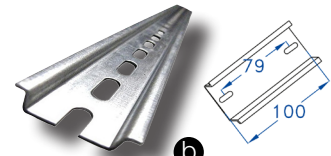
Modular Enclosures

Accessories

The CE-TEK's GR range of enclosures, includes a number of useful accessories, such as galvanised mild steel Mounting Plates (a.), for the installation of equipment, connectors and other components, or alternatively, cut to length sections of TS35 DIN Rail (b.) for mounting terminal blocks etc.

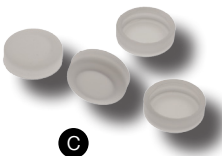


a



b

Also available are Insulation Caps (c.) to cover the internal fixing screw heads, & ensure compliance with IEC standard 61140 (formally IEC 536-2), along with kits of moulded ABS external Mounting Brackets and fixing screws, (d.) pairs of innovative Hinged Lid Screws (e.) suitable for certain box sizes in the range, and just in case of damage or loss on-site, then the offer includes replacement Techno-Polymer Lid Screws (f) as well.



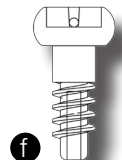
c



d



e



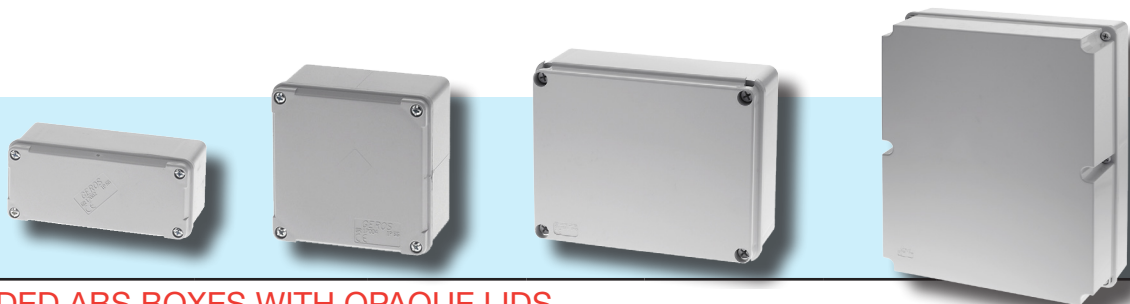
f

Range Selection and Ordering Information



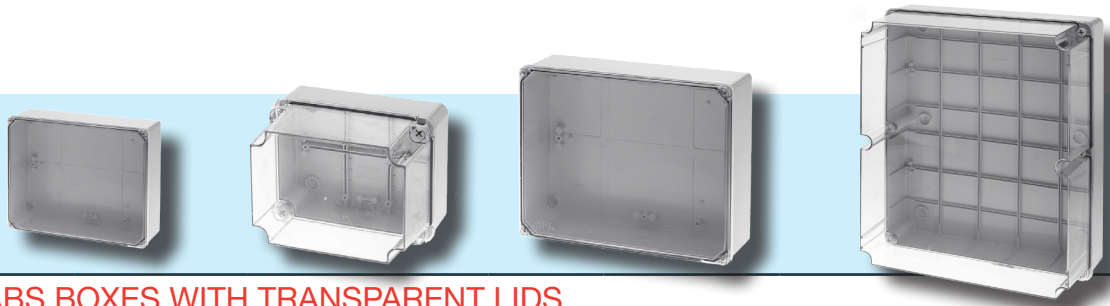
STEPPED GLAND KNOCKOUT SIDED ABS BOXES WITH OPAQUE LIDS

	Size (LxWxD)	Body Colour	Lid Colour	IP Rating	Lid screw type	Hingable	Cap size	Sales unit
GR17000	Ø 83 X 45	RAL7035 Grey	RAL7035 Grey	IP44	n/a Snap -On	No	Small	1 (Pack of 3)
GR17001	Ø 68 X 40	RAL7035 Grey	RAL7035 Grey	IP44	n/a Snap -On	No	Small	1 (Pack of 3)
GR17003	83 X 83 X43	RAL7035 Grey	RAL7035 Grey	IP44	n/a Snap -On	No	Small	1 (each)



PLAIN SIDED ABS BOXES WITH OPAQUE LIDS

	Size (LxWxD)	Body Colour	Lid Colour	IP Rating	Lid screw type	Hingable	Cap size	Sales unit
GR17002	55 X 130 X 60	RAL7035 Grey	RAL7035 Grey	IP65	Metal	No	Small	1 (each)
GR17004	100 X 100 X 60	RAL7035 Grey	RAL7035 Grey	IP65	Metal	No	Small	1 (each)
GR17006	130 X 90 X 65	RAL7035 Grey	RAL7035 Grey	IP65	Metal	No	Small	1 (each)
GR17008	150 X 110 X 75	RAL7035 Grey	RAL7035 Grey	IP65	Metal	No	Small	1 (each)
GR17010	150 X 140 X 75	RAL7035 Grey	RAL7035 Grey	IP65	Metal	No	Small	1 (each)
GR17011	190 X 140 X 75	RAL7035 Grey	RAL7035 Grey	IP65	Tecno-Polymer	Yes	Large	1 (each)
GR17012	170 X 170 X 75	RAL7035 Grey	RAL7035 Grey	IP65	Metal	No	Small	1 (each)
GR17013	170 X 170 X 128	RAL7035 Grey	RAL7035 Grey	IP65	Metal	No	Small	1 (each)
GR17014	240 X 190 X 90	RAL7035 Grey	RAL7035 Grey	IP65	Metal	No	Small	1 (each)
GR17015	190 X 140 X 140	RAL7035 Grey	RAL7035 Grey	IP65	Tecno-Polymer	Yes	Large	1 (each)
GR17016	310 X 240 X 100	RAL7035 Grey	RAL7035 Grey	IP65	Metal	No	Small	1 (each)
GR17020	240 X 190 X 95	RAL7035 Grey	RAL7035 Grey	IP65	Tecno-Polymer	Yes	Large	1 (each)
GR17240	240 X 190 X 120	RAL7035 Grey	RAL7035 Grey	IP65	Metal	No	Small	1 (each)
GR17242	310 X 240 X 120	RAL7035 Grey	RAL7035 Grey	IP65	Metal	No	Small	1 (each)
GR17244	380 X 300 X 120	RAL7035 Grey	RAL7035 Grey	IP65	Tecno-Polymer	Yes	Large	1 (each)
GR17246	380 X 300 X 180	RAL7035 Grey	RAL7035 Grey	IP65	Tecno-Polymer	Yes	Large	1 (each)
GR17248	460 X 380 X 120	RAL7035 Grey	RAL7035 Grey	IP65	Tecno-Polymer	Yes	Large	1 (each)
GR17250	460 X 380 X 180	RAL7035 Grey	RAL7035 Grey	IP65	Tecno-Polymer	Yes	Large	1 (each)



PLAIN SIDED ABS BOXES WITH TRANSPARENT LIDS

	Size (LxWxD)	Body Colour	Lid Colour	IP Rating	Lid screw type	Hingable	Cap size	Sales unit
GR17208	150 X 110 X 75	RAL7035 Grey	Clear (Polycarbonate)	IP65	Metal	No	Small	1 (each)
GR17210	150 X 140 X 75	RAL7035 Grey	Clear (Polycarbonate)	IP65	Metal	No	Small	1 (each)
GR17211	190 X 140 X 75	RAL7035 Grey	Clear (Polycarbonate)	IP65	Tecno-Polymer	Yes	Large	1 (each)
GR17212	170 X 170 X 75	RAL7035 Grey	Clear (Polycarbonate)	IP65	Metal	No	Small	1 (each)
GR17213	170 X 170 X 120	RAL7035 Grey	Clear (Polycarbonate)	IP65	Metal	No	Small	1 (each)
GR17214	240 X 190 X 90	RAL7035 Grey	Clear (Polycarbonate)	IP65	Metal	No	Small	1 (each)
GR17215	90 X 140 X 140	RAL7035 Grey	Clear (Polycarbonate)	IP65	Tecno-Polymer	Yes	Large	1 (each)
GR17216	310 X 240 X 100	RAL7035 Grey	Clear (Polycarbonate)	IP65	Metal	No	Small	1 (each)
GR17220	240 X 190 X 100	RAL7035 Grey	Clear (Polycarbonate)	IP65	Tecno-Polymer	Yes	Large	1 (each)
GR17282	240 X 190 X 120	RAL7035 Grey	Clear (Polycarbonate)	IP65	Metal	No	Large	1 (each)
GR17284	310 X 240 X 120	RAL7035 Grey	Clear (Polycarbonate)	IP65	Metal	No	Small	1 (each)
GR17286	380 X 300 X 120	RAL7035 Grey	Clear (Polycarbonate)	IP65	Tecno-Polymer	Yes	Large	1 (each)
GR17288	380 X 300 X 180	RAL7035 Grey	Clear (Polycarbonate)	IP65	Tecno-Polymer	Yes	Large	1 (each)
GR17290	460 X 380 X 120	RAL7035 Grey	Clear (Polycarbonate)	IP65	Tecno-Polymer	Yes	Large	1 (each)
GR17292	460 X 380 X 180	RAL7035 Grey	Clear (Polycarbonate)	IP65	Tecno-Polymer	Yes	Large	1 (each)

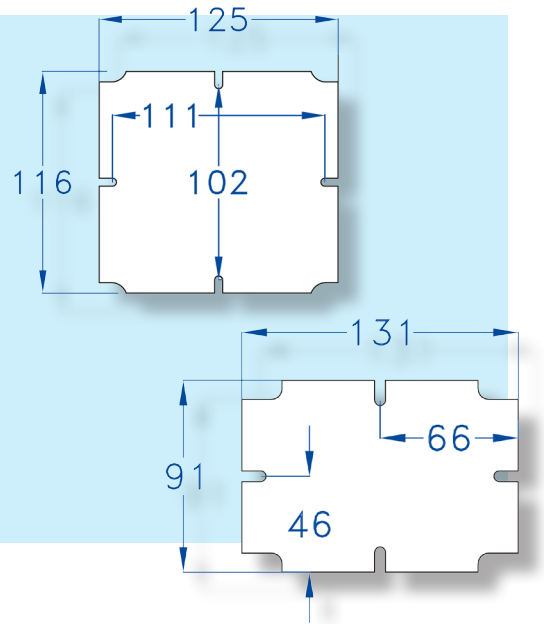


PLAIN SIDED ABS MODULAR DIN RAIL ENCLOSURES

	Size (HxWxD)	Body Colour	Lid Colour	IP Rating	No. of Modules	Din Rail(TS35) included	Cap size
GR15070	154 X 114 X	RAL7035 Grey	Smoked (Polycarbonate)	IP65	4 to 5	Yes	1 (each)
GR15072	150 X 140 X 75	RAL7035 Grey	Smoked (Polycarbonate)	IP65	6 to 8	Yes	1 (each)
GR15074	190 X 140 X 75	RAL7035 Grey	Smoked (Polycarbonate)	IP65	12	Yes	1 (each)
GR15076	460 X 380 X 180	RAL7035 Grey	Smoked (Polycarbonate)	IP65	12 to 24	Yes	1 (each)

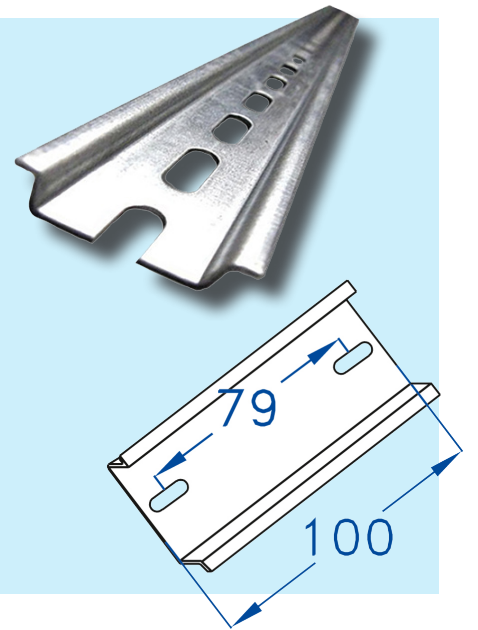
GALVANISED MILD STEEL MOUNTING PLATES

	For use with Box size	Actual Dims	Sales Unit
GR17508	150 X 110	125 X 85	1 (each)
GR17510	150 X 140	125 X 115	1 (each)
GR17512	170 X 170	150 X 150	1 (each)
GR17513	190 X 140	185 X 135	1 (each)
GR17515	240 X 190	215 X 165	1 (each)
GR17516	310 X 240	280 X 215	1 (each)
GR17518	380 X 300	360 X 280	1 (each)
GR17520	460 X 380	440 X 360	1 (each)



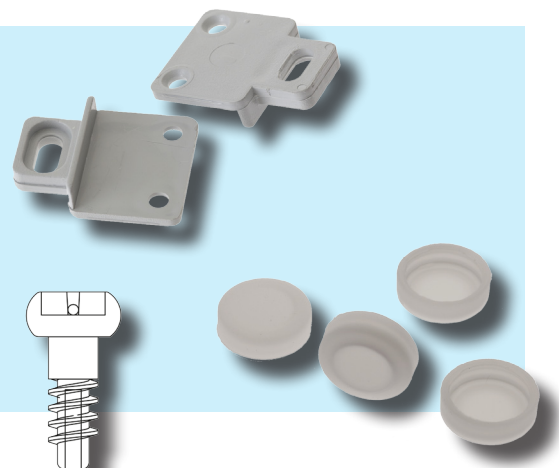
DIN RAIL 35 x 7.5mm "TOP-HAT" FORMAT

	For use with Box size	Actual Dims	Sales Unit
GR17302	130 X 55	50	1 (each)
GR17304	100 X 100	90	1 (each)
GR17306	130 X 90	80	1 (each)
GR17308	150 X 110	100	1 (each)
GR17310	150 X 140	132	1 (each)
GR17312	170 X 170	160	1 (each)
GR17314	240 X 190	235	1 (each)
GR17316	310 X 240	297	1 (each)
GR17320	460 X 380	360	1 (each)



ACCESSORIES

	Description	Sales Units
GR17400	"INSULATING SPARE SCREWS CAPS - SMALL (12/14MM DIA) "	1 (Pack of 4)
GR17401	"INSULATING SPARE SCREWS CAPS - LARGE (25/27MM DIA) "	1 (Pack of 4)
GR17402	PACK OF 4 FIXING BRACKETS + SCREWS	1 (Pack of 4)
GR17412	2 REPLACEMENT HINGED TECHNO-POLYMER SCREWS	1 (Pack of 4)
GR17414	SPARE TECHNO-POLYMER SCREWS	1 (Pack of 4)



Secondary Operations

Machining, Assembly and Customising

A full range of secondary operations are available for the GR Range of boxes at very competitive prices including drilling, milling and other machining, silk screen / adhesive vinyl label printing and engraving, pre-delivery factory fitting of mounting plates, DIN rails, cable glands, plugs and sockets along with a full range of terminals and other components.

By taking advantage of these services you can save time & money on tools and skilled labour both at your own facilities and later on site, and significantly reduce installation times through the use of factory integrated and conditioned GR enclosures. CE-TEK is a true "One stop shop" for all your enclosure modification needs.



Certificates of Conformity

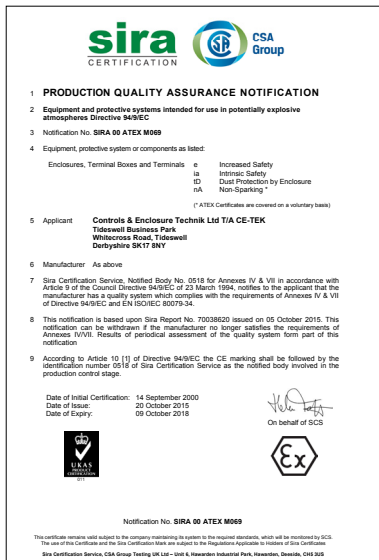
All CE-TEK products can be certified and certificates of conformity are available on request.

Technical drawings

CE-TEK provides technical drawings for all its standard products. We also offer a drawing service at competitive costs to all our customers.

Quality

CE-TEK's manufacturing and business processes operate within an EN ISO 9001-2008 quality framework.



Locations

CE-TEK's UK Head Office is based in Tideswell, Derbyshire, with operating businesses in Americas, Singapore and distributors worldwide

CE-TEK UK
Units 1 - 4
Tideswell Business Park
Tideswell
Derbyshire
SK17 8NY
UK

Tel: 0044 (0)1298 872233
Fax: 0044 (0)1298 871155
Email: sales@ce-tek.co.uk
Web: www.ce-tek.co.uk

CE-TEK Americas LLC
1104 Parkway View Drive
Pittsburgh
Pennsylvania
15205
USA

Tel: 001 412 747 4970
Email: sales@ce-tek.com
Web: www.ce-tek.com

CE-TEK Asia
40 Kallang Place
Singapore
339168

Tel: 0065 6643 9124
Fax: 0065 6643 9125
Email: sales@ce-tek-asia.com
Web: www.ce-tek-asia.com



Agent/Distributor

