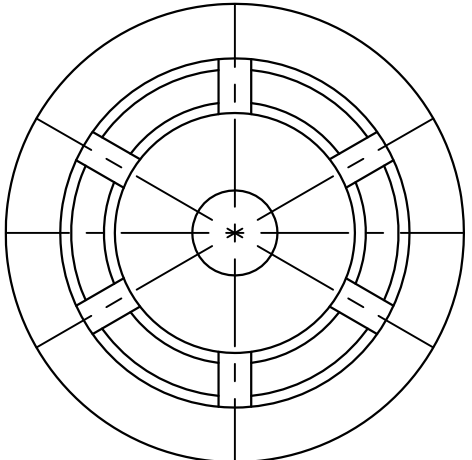
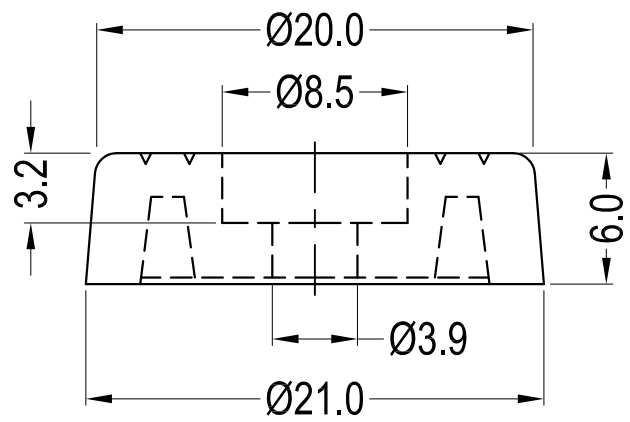


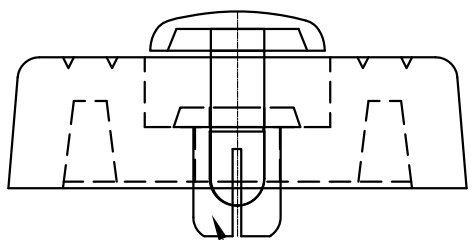
DO NOT SCALE DRAWING

REVISIONS				
ZONE	REV.	DESCRIPTION	DATE	APPROVED
	A	DRAWN	08-08-2013	

Body



Assembly



Rivet

Part No.	Panel Thickness
TRFF-008-P4×6B	0.8-1.8
TRFF-008-P4×7B	1.9-2.8
TRFF-008-P4×8B	2.9-4.0

- Notes:
- 1.Material:TPR UL94 HB(Body)  
PA6 UL94 V2(Rivet)
  - 2.RoHS Compliant;
  - 3.Hole: $\text{Ø}4.1-4.2\text{mm}$ .



DESIGN RIGHT. TR FASTENINGS LTD, 2003  
UNDER NO CIRCUMSTANCES MUST THIS  
DRAWING BE COPIED OR DISCLOSED,  
WITHOUT FIRST OBTAINING WRITTEN  
AUTHORITY.

UNLESS OTHERWISE SPECIFIED:  
DIMENSIONS ARE IN MILLIMETERS.  
SURFACE FINISH:  
TOLERANCES:  
 $L \leq 4 = \pm 0.1$   $4 < L \leq 15 = \pm 0.2$   
 $15 < L \leq 50 = \pm 0.3$   $50 < L \leq 100 = \pm 0.4$

NAME	DATE
DRAWN MARTIN ELLIOTT	08/08/2013
CHK'D	
APPV'D	

MATERIAL  
SEE NOTES

HEAT TREATMENT  
N/A

FINISH  
Black

TITLE  
SOFT FAST FOOT

CUSTOMER PART NO.

DWG NO.  
TRFF-008

A3