



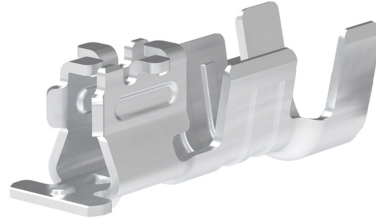
Part Number : [2063960001](#)

Product Description : KK Plus 300 Female Crimp Terminal, 18-20 AWG, Tin (Sn) Plating, Reel

Series Number : 206396

Status : Active

Product Category : Crimp Terminals



Documents & Resources

Drawings

[Drawing 2063960001_sd.pdf](#)

[Packaging Design Drawing 2063960000-PK-000.pdf](#)

Specifications


[Application Specification 2092080000-AS-000.pdf](#)

[Product Specification 2092080000-PS-000.pdf](#)

[Test Summary 2092080000-TS-000.pdf](#)

Product Environment Compliance

Compliance

GADSL/IMDS	Not Relevant
China RoHS	
EU ELV	Not Relevant
Low-Halogen Status	Low-Halogen per IEC 61249-2-21
REACH SVHC	Not Contained per D(2023)3788-DC (14 Jun 2023)
EU RoHS	Compliant per EU 2015/863

Multiple Part Product Compliance Statements

- Eu RoHS
- REACH SVHC
- Low-Halogen

Multiple Part Industry Compliance Documents

- IPC 1752A Class C
- IPC 1752A Class D
- Molex Product Compliance Declaration

- IEC-62474

- chemSHERPA (xml)

EU RoHS Certificate of Compliance

Part Details

General

Status	Active
Category	Crimp Terminals
Series	206396
Description	KK Plus 300 Female Crimp Terminal, 18-20 AWG, Tin (Sn) Plating, Reel
Application	Power, Wire-to-Board
Product Family	KK Interconnect Systems
Product Name	KK Plus
UPC	193264185849

Electrical

Current - Maximum per Contact	11.0A
Voltage - Maximum	250V AC (RMS)/DC

Physical

Durability (mating cycles max)	25
Gender	Female
Material - Metal	Copper Alloy
Material - Plating Mating	Tin
Material - Plating Termination	Tin
Net Weight	0.100/g
Packaging Type	Reel
Termination Interface Style	Crimp or Compression
Wire Insulation Diameter	1.42mm-2.10mm
Wire Size (AWG)	18, 20
Wire Size mm ²	N/A

Use with Part(s)

Description	Part Number
KK Plus 300 Single Row Receptacle Housings	<u>209209</u>

Application Tooling

Global

Description	Part Number
Hand Crimp Tool for KK Plus 300 Receptacle Terminal, 18-20 AWG, UL1007 and UL1061 Wires	<u>2002189600</u>
FineAdjust Applicator for KK Plus 300 Receptacle Terminal, 18-20 AWG Wires with Smaller Insulation	<u>2037026600</u>
FineAdjust Applicator for KK Plus 300 Receptacle Terminal, 18-20 AWG Wires with Larger Insulation	<u>2037027100</u>
Extraction and Activation Tool	<u>0638132700</u>
