



VOLTAGE RELEASE, AC 20...24V, 50/60HZ, 100% ED, AC 20...70V, 50/60HZ, 5SEC ED, DC 20...70V, 5SEC ED, WITH SPRING-L. CONNECTION, FOR CIRCUIT-BREAKERS 3RV2

General technical data:		
product brand name		SIRIUS
Product designation		shunt release
Size of the circuit-breaker		S00, S0, S2
Design of the product		<kein Wert>
Suitability for use		motor circuit breaker
Protection class IP on the front		IP20
Design of short-circuit protection		fuse
Degree of pollution		3
Insulation voltage Rated value	V	690
Insulation voltage with degree of pollution 3 Rated value	V	690
Ambient temperature		
• during storage	°C	-50 ... +80
• during operation	°C	-20 ... +60
Equipment marking acc. to DIN 40719 extended according to IEC 204-2 acc. to IEC 750		F
Equipment marking acc. to DIN EN 61346-2		F

Auxiliary circuit:		
Number of NC contacts for auxiliary contacts instantaneous contact		0
Number of NO contacts for auxiliary contacts instantaneous contact		0
Number of NO contacts for auxiliary contacts leading contact		0

Number of CO contacts of the auxiliary contacts instantaneous contact		0
---	--	---

### Control circuit/ Control:

<b>Type of voltage of the control supply voltage</b>		AC
<b>Control supply voltage frequency</b>		
• 1		<kein Wert>
— Rated value		
— Initial rated value	Hz	50
— Final rated value	Hz	60
• 2 Rated value		<kein Wert>
<b>Control supply voltage</b>		
• 1		
— for DC		
— Rated value		<kein Wert>
— Initial rated value		<kein Wert>
— Final rated value		<kein Wert>
— with AC		
— at 50 Hz Rated value	V	<kein Wert>
— at 50 Hz Initial rated value	V	20
— at 50 Hz Final rated value	V	24
— at 60 Hz Rated value	V	<kein Wert>
— at 60 Hz Final rated value	V	24
— at 60 Hz Initial rated value	V	20
• 2		
— for DC Rated value		<kein Wert>
— with AC		
— at 50 Hz Rated value		<kein Wert>
— at 60 Hz Rated value		<kein Wert>

### Installation/ mounting/ dimensions:

<b>Mounting type</b>		snap-on mounting
<b>Width</b>	mm	18.5
<b>Height</b>	mm	90
<b>Depth</b>	mm	68
<b>Required spacing with side-by-side mounting</b>		
• forwards		<kein Wert>
• Backwards		<kein Wert>
• upwards		<kein Wert>
• downwards		<kein Wert>
• at the side		<kein Wert>
<b>Required spacing for grounded parts</b>		
• forwards		<kein Wert>

- Backwards
- upwards
- at the side
- downwards

<kein Wert>  
<kein Wert>  
<kein Wert>  
<kein Wert>

#### Required spacing for live parts





- forwards
- Backwards
- upwards
- downwards
- at the side

<kein Wert>  
<kein Wert>  
<kein Wert>  
<kein Wert>  
<kein Wert>

#### Certificates/ approvals:

##### Certificate of suitability

CE / UL / CSA

General Product Approval	Declaration of Conformity	Test Certificates		Shipping Approval
 CSA	 UL	 EG-Konf.	<a href="#">Special Test Certificate</a>	<a href="#">Type Test Certificates/Test Report</a>
				 ABS

#### Shipping Approval



#### Shipping Approval

#### other



[Environmental Confirmations](#)



[other](#)

#### Further information

##### Information- and Downloadcenter (Catalogs, Brochures,...)

<http://www.siemens.com/industrial-controls/catalogs>

##### Industry Mall (Online ordering system)

<http://www.siemens.com/industrymall>

##### Cax online generator

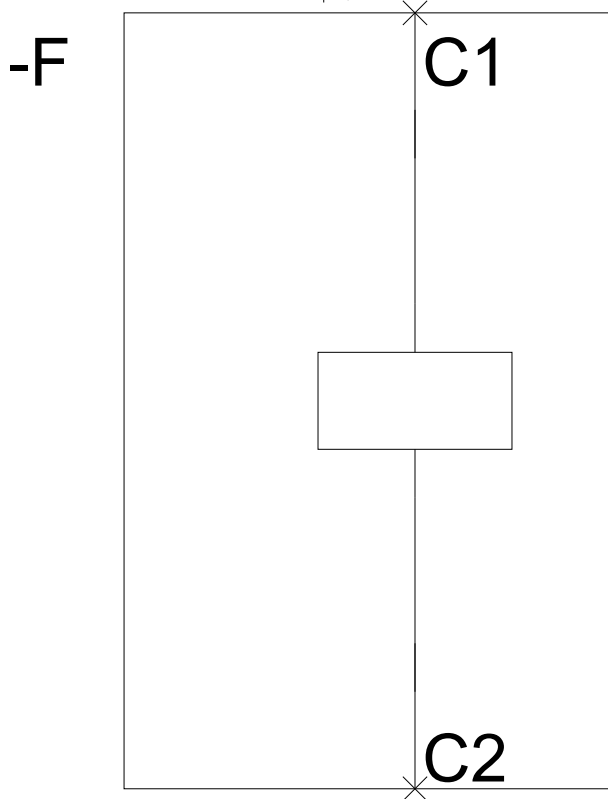
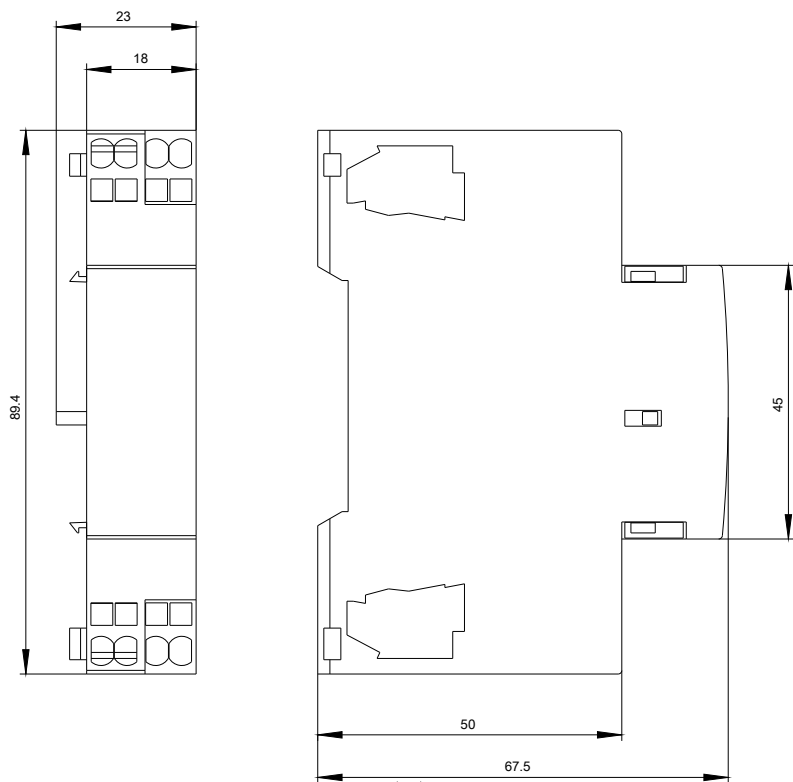
<http://support.automation.siemens.com/WW/CAXorder/default.aspx?lang=en&mfb=3RV29022DB0>

##### Service&Support (Manuals, Certificates, Characteristics, FAQs,...)

<http://support.automation.siemens.com/WW/view/en/3RV29022DB0/all>

##### Image database (product images, 2D dimension drawings, 3D models, device circuit diagrams, EPLAN macros, ...)

<http://www.automation.siemens.com/bilddb/index.aspx?attID9=3RV29022DB0&lang=en>



last modified:

09.03.2015