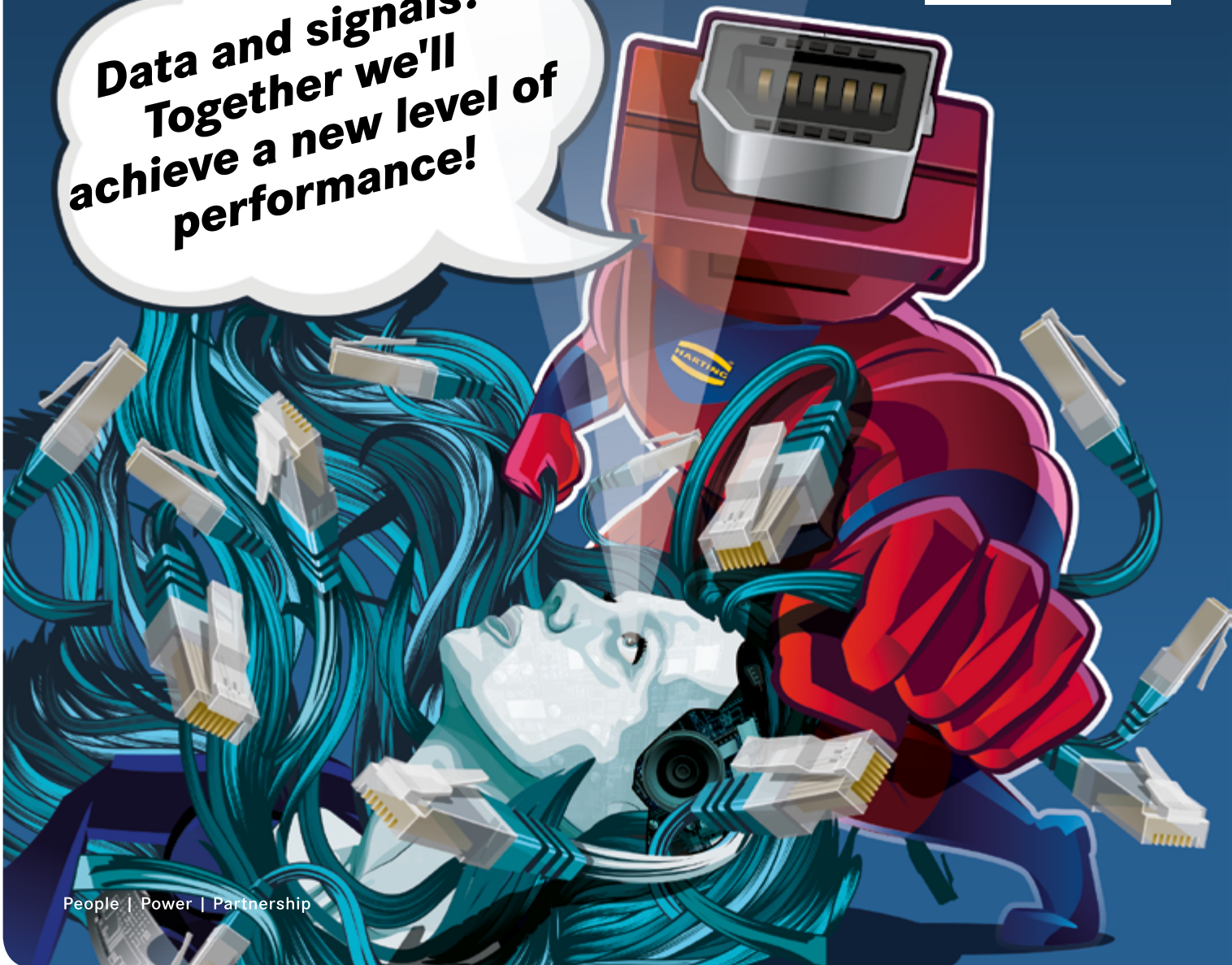




Pushing Performance

**Data and signals?
Together we'll
achieve a new level of
performance!**



People | Power | Partnership

The new top performer for data and signals
HARTING ix Industrial®

More compact. More robust. More powerful.

HARTING ix Industrial®

Increased miniaturisation.

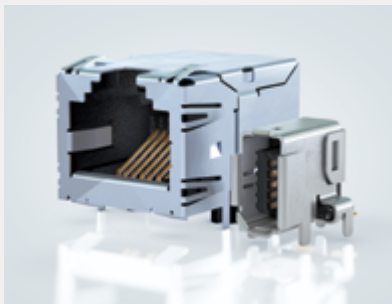
Your advantages at a glance.

The HARTING ix Industrial® is our answer to the challenges that will be presented by Industry 4.0 and the IoT. Successful miniaturisation ensures the HARTING ix Industrial® will be a top performer in your application. The ix Industrial® interface demonstrates its capabilities in Industrial Ethernet (type A) as well as in signals and serial BUS systems (type B).



One standard – Two mating faces.
Millions of possible applications.

With the two mating face types A and B (both standardised according to IEC 61076-3-124), you are always on the right track: with no mix-ups and no malfunctions.



70% less size compared to the RJ45

Reduce the size of your printed circuit board, gain space, miniaturise your hoods and housings, and minimise weight by taking advantage of Captain ix.



Robust socket with THR shield contacts.

With ix Industrial®, you get outstanding stability on the printed circuit board.



Shown in actual size



A closer look at the
ix Industrial®
portfolio: Visit us at
the HARTING eShop.

**Resistant to shock and vibration,
designed for 5000 mating cycles**

It shakes, rattles and vibrates.
Captain ix secures your connection:
fewer outages and more secure communication.



**Kat. 6_A performance for 1/10 Gbit/s
PoE/PoE+ capability.**

Captain ix offers you a future-proof Ethernet
connection with top performance.



**Two snap-in metal hooks ensure that the socket receptacle
and the plug connector are safely connected.**

It clicks in! You know the connection is secure when you hear the
click when plugging in. Unplugged accidentally? Impossible!



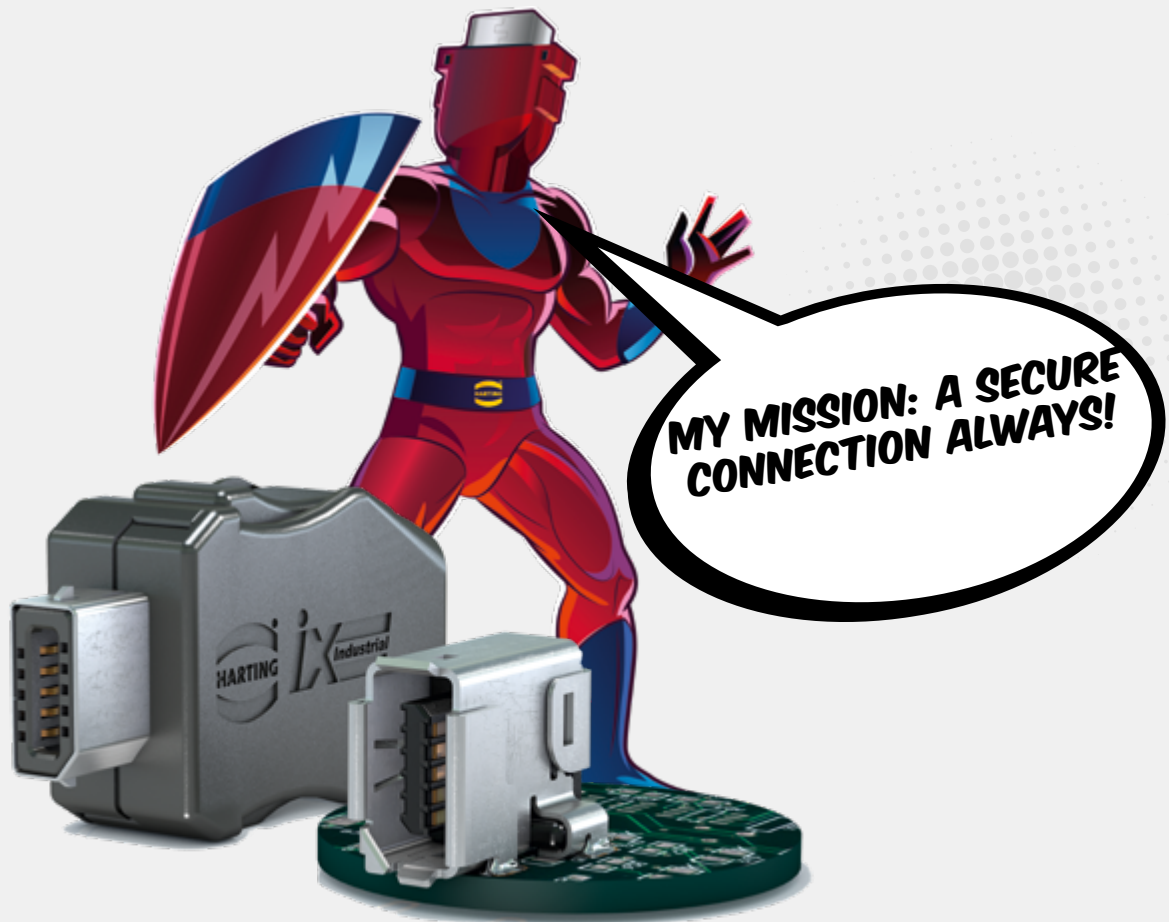
**Continuous 360° shielding and robust cable
attachment.**

Captain ix protects your connection from electro-
magnetic radiation: less susceptibility to interference
results in better connections.



HARTING ix Industrial®

Compact. Robust. Powerful.



Plan for tomorrow today: with the more compact, robust and powerful HARTING ix Industrial® interface.

The new HARTING ix Industrial® connector is a clear commitment to miniaturisation. Standardised according to IEC 61076-3-124, this connector sets a new benchmark for modularisation and digitisation: one form factor, two mating faces – with type A for Ethernet and type B for signals and serial BUS systems. The ix Industrial® provides you with a solution today that ensures your investment into the future.

Product overview

		Images	Advantages	Description	Product number
PCB sockets	Type A (data)		<ul style="list-style-type: none"> THR shield contacts are used to secure the robust socket permanently onto the PCB. Their compatibility with the reflow soldering process means: a) They can be integrated into the existing infrastructure, b) Less time is needed for on-board processing. It is not possible to mistakenly plug in the wrong connector, because of the A / B coding of the mating face. 	<ul style="list-style-type: none"> ix Industrial® type A, angled vertical, solder termination, roll of 400 pieces 	09 45 281 2560
				<ul style="list-style-type: none"> ix Industrial® type A, angled vertical, solder termination, 1 piece 	09 45 281 2560 333
				<ul style="list-style-type: none"> ix Industrial® type A, angled horizontal, solder termination, roll of 550 pieces 	09 45 281 2561
	Type B (signal)			<ul style="list-style-type: none"> ix Industrial® type A, angled horizontal, solder termination, 1 piece 	09 45 281 2561 333
				<ul style="list-style-type: none"> ix Industrial® type A, vertical, solder termination, roll of 450 pieces 	09 45 281 2562
				<ul style="list-style-type: none"> ix Industrial® type A, vertical, solder termination, 1 piece 	09 45 281 2562 333
Connectors	Type A (data)		<ul style="list-style-type: none"> ix Industrial® type B, angled vertical, solder termination, roll of 400 pieces ix Industrial® type B, angled vertical, solder termination, 1 piece ix Industrial® type B, angled horizontal, solder termination, roll of 550 pieces ix Industrial® type B, angled horizontal, solder termination, 1 piece ix Industrial® type B, vertical, solder termination, roll of 450 pieces ix Industrial® type B, vertical, solder termination, 1 piece 	<ul style="list-style-type: none"> ix Industrial® type B, angled vertical, solder termination, roll of 400 pieces 	09 45 281 9000
				<ul style="list-style-type: none"> ix Industrial® type B, angled vertical, solder termination, 1 piece 	09 45 281 9000 333
				<ul style="list-style-type: none"> ix Industrial® type B, angled horizontal, solder termination, roll of 550 pieces 	09 45 281 9001
	Type B (signal)			<ul style="list-style-type: none"> ix Industrial® type B, angled horizontal, solder termination, 1 piece 	09 45 281 9001 333
				<ul style="list-style-type: none"> ix Industrial® type B, vertical, solder termination, roll of 450 pieces 	09 45 281 9002
				<ul style="list-style-type: none"> ix Industrial® type B, vertical, solder termination, 1 piece 	09 45 281 9002 333
Connectors	Type A (data)		<ul style="list-style-type: none"> Suitable for various conductor cross-sections. IDC insulation displacement terminal connection (can be assembled in the field) for easy installations. 	<ul style="list-style-type: none"> ix Industrial® type A, AWG 28 – 22, Cat. 6_A, solder termination, 100 pieces 	09 45 181 2560 XL
	Type B (signal)			<ul style="list-style-type: none"> ix Industrial® type A, AWG 28 – 26, Cat. 6_A, IDC, 100 pieces ix Industrial® type A, AWG 24, Cat. 6_A, IDC, 100 pieces 	09 45 181 2561 XL 09 45 181 2562 XL
Connectors	Type B (signal)		<ul style="list-style-type: none"> ix Industrial® type B, AWG 28 – 22, solder termination, 100 pieces 	09 45 181 9000 XL	
			<ul style="list-style-type: none"> ix Industrial® type B, AWG 28 – 26, IDC, 100 pieces 	09 45 181 9001 XL	
			<ul style="list-style-type: none"> ix Industrial® type B, AWG 24, IDC, 100 pieces 	09 45 181 9002 XL	

Product overview

	Images	Advantages	Description	Product number
System cable ix-ix	Type A (data)	<ul style="list-style-type: none"> Pre-assembled system cables save time and money. 100 % tested and functional system cables help avoid sources of error. The ix Industrial® interface can easily be integrated by combining it with other mating faces. Combinations of mating faces are available on request, including ix-M12, ix-D-Sub, etc. 	<ul style="list-style-type: none"> ix Industrial® type A copper cable (round), PVC, pre-assembled on both sides, number of wire cores: 8, wire layout: 4x 2x AWG 28/7, Cat. 6_A 	09 48 262 6749 xxx
			xxx 002 003 004 005 007 010 015 020 025 030 050 075 100 Length: 0.2 0.3 0.4 0.5 0.7 1.0 1.5 2.0 2.5 3.0 5.0 7.5 10.0	
	Type B (signal)		<ul style="list-style-type: none"> ix Industrial® type B copper cable (round), PVC, pre-assembled on both sides, number of wire cores: 10, wire layout: 10x AWG 26 	33 48 111 1A20 xxx
			xxx 003 005 010 015 020 030 050 075 100 Length: 0.3 0.5 1.0 1.5 2.0 3.0 5.0 7.5 10.0	
	Type B (signal)		<ul style="list-style-type: none"> ix Industrial® type B copper cable (round), PUR, pre-assembled on both sides, number of wire cores: 10, wire layout: 10x AWG 26 	33 48 111 1A21 xxx
			xxx 003 005 010 015 020 030 050 075 100 Length: m 0.2 0.3 0.4 0.5 0.7 3.0 5.0 7.5 10.0	
System cable ix-R/45	Type A (data)	<ul style="list-style-type: none"> ix Industrial® type A copper cable (round), PVC, pre-assembled on both sides, number of wire cores: 8, wire layout: 4x 2x AWG 28/7, Cat. 6_A 	09 48 261 2749 xxx	
		XXX 002 003 004 005 007 010 015 020 025 030 050 075 100 Length: m 0.2 0.3 0.4 0.5 0.7 1.0 1.5 2.0 2.5 3.0 5.0 7.5 10.0		
Accessories	Adapter	<ul style="list-style-type: none"> preLink® technology paired with the robustness of the ix Industrials® for connecting cables easily. 	Adapter PCB: preLink® PCB to ix Industrial®	20 82 008 0001
	Tool	<ul style="list-style-type: none"> Dual-function assembly tool for the IDC press-fit process and crimping the cable holder. Ratchet mechanism to optimally apply force. 	ix Industrial® assembly tool	09 45 800 0181
	Testing	<ul style="list-style-type: none"> Compatible with the DSX CableAnalyzer™ series. Tests ix Industrial® cable assemblies quickly and conveniently. Complies with the strictest requirements. 	ix Industrial® FLUKE channel adapter <i>Available in: Q2/2019</i>	09 45 800 0183

Machinery & robotics



Energy



Automation



Data networks



Transportation





Pushing Performance

HARTING.com - the gateway to your
country website.
