

FEATURES

- 3 independently-controlled and isolated outputs
- Supports front panel timing output functions
- 4.3 inch true colour TFT- LCD 480x272 display
- Clear graphical interface with waveform display function
- Intelligent temperature-controlled fan effectively reduces noise

RS PRO Programmable Linear, Bench Power Supply, 220W, 3 Output, 0 → 32V 3.2A

RS Stock No.: 123-6468



RS Professionally Approved Products bring to you professional quality parts across all product categories. Our product range has been tested by engineers and provides a comparable quality to the leading brands without paying a premium price.

Product Description

RS PRO RSPD3303X (123-6469) and RSPD3303X-E (123-6468) are programmable linear DC power supplies. RSPD3303X has a 5 digits voltage/4 digits current display, 1 mV, 1 mA resolution. RSPD3303X-E has a 4 digits voltage/3 digits current display, 10 mV, 10 mA resolution. The highest resolution of 1 mV/1 mA (SPD3303X) provides excellent setting and read-back accuracy. This ensures accurate output even with very small changes in voltage or current, which is not possible with a low resolution power supply. RSPD3303X and RSPD3303X-E have a 4.3 inch TFT LCD display, support remote programming and have a real time wave display. There are three isolated outputs, two adjustable channels and one selectable channel from 2.5 V, 3.3 V and 5 V. Series and parallel functions allow for combining two channels into one output with more power output capability, extending the application range. Each of the three channels of power can be turned on or off independently and can also be turned all on or all off. Instrument features include protection against output short and overload.

General Specifications

Type	Programmable Linear Power Supply
Mode	Series, parallel, independent
Number of Displays	2
Input Connector	IEC 320
Output Connector	Binding Post terminal
Number of Outputs	3
Recovery or Reaction Time	< 50µs (50% load change, minimum load 0.5A)
Number of channel	3
Locking key	Yes
Memory Save/Recall	5 sets
Insulation	Case to Terminal: ≥20 MΩ (DC 500 V) Case to AC line: ≥30 MΩ (DC 500 V)
Interface	LAN , USB device
Application	Production, Education, Research

Electrical Specifications

Supply Voltage	230VAC
Output Voltage	0V to 32V
Output Current	3.2A
Power Rating	220W
Load Regulation	Constant voltage mode:-Voltage: $\leq 0.01\% + 3 \text{ mV}$ Constant current mode:- Current: $\leq 0.2\% + 3 \text{ mA}$
Line Regulation	Constant voltage mode Voltage: $\leq 0.01\% + 3 \text{ mV}$ Constant current mode Current: $\leq 0.2\% + 3 \text{ mA}$
Ripple(20hz-20M)	Constant voltage mode Voltage: $\leq 1 \text{ mVrms}$ Constant current mode Current: $\leq 3 \text{ mArms}$
Series Regulation	Line: $\leq 0.01\% + 5 \text{ mV}$ Load: $\leq 300 \text{ mV}$
Parallel regulation	Line : $0.01\% + 3 \text{ mV}$ Load : $0.01\% + 3 \text{ mV}$

Mechanical Specifications

Dimension	225mm x143mm x278mm
Length	278mm
Width	225mm
Height	143mm
Weight	8 kg

Operation Environment Specifications

Altitude	$\leq 2000 \text{ m}$
Relative humidity	$\leq 80\%$
Minimum Temperature	0°C
Maximum Temperature	40°C
Operation Temperature	0°C - 40°C
Storage Temperature	-10°C - 70°C

Channel 3 Specifications

Output Voltage	(2.5/3.3/5V) $\pm 8\%$
Line Regulation	$\leq 0.01\% + 3\text{mV}$
Load Regulation	$\leq 0.01\% + 3\text{mV}$

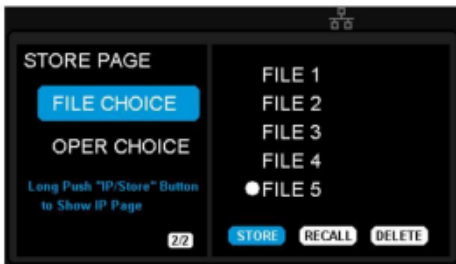
Meter Specifications

Type	4.3 inch true colour TFT-LCD 4.3 inch true colour 4digits voltage 3 digits current
Voltage Resolution	10mV
Current Resolution	10mA
Setting Accuracy	Voltage $\pm(0.5\%$ of reading +2 digits); Current $\pm(0.5\%$ of reading +2digits)
Read back Accuracy	Voltage $\pm(0.5\%$ of reading +2 digits); Current $\pm(0.5\%$ of reading +2digits)

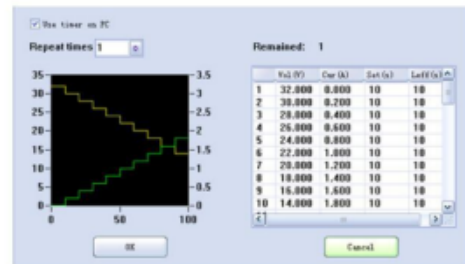
Approvals

Compliance/Certifications	RoHS certificate of compliance
----------------------------------	--------------------------------





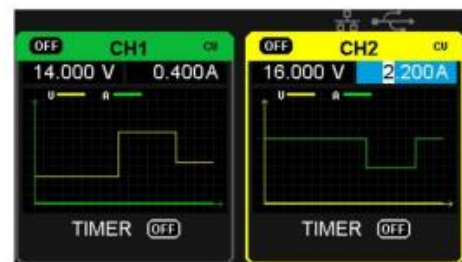
Internal Storage



PC Timer



Panel timing output



Real time wave display