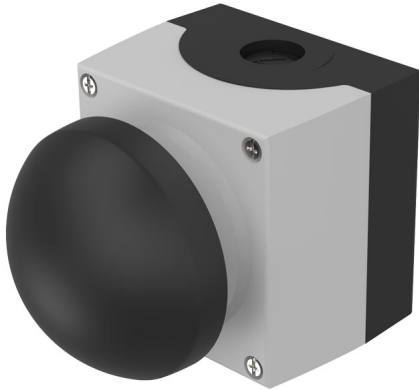


# EAO – Your Expert Partner for Human Machine Interfaces

45-481.1810 - Palm Switch

## 45-481.1810 - Palm Switch



*Attention: The preview is based on a sample product. This can differ from your current configuration.*

### Mounting

Design raised

### Front

Front shape round  
Front dimension 85 x 85 mm

### Other Attributes

Weight 0,390 kg

### Operating-/Indication part

Lens optics opaque  
Lens material Plastic  
Lens colour black  
Lens profile Mushroom  
Lens illumination non-illuminative

### IP-Rating

Front protection IP66, IP67, IP69K

### Actuator

Switching action Momentary  
Housing material Plastic  
Housing colour grey

### Switching element

max. number of switching elements 3  
Switching system Slow-make switching element

### Function

Palm Switch

# EAO – Your Expert Partner for Human Machine Interfaces

45-481.1810 - Palm Switch

## Dimensions

