

- 1
- 2
- 3
- 4
- 5
- 6
- 7
- 8
- 9
- 10
- 11
- 12
- 13
- 14
- 15
- 16
- 17
- 18

## STANDARD EXECUTIONS

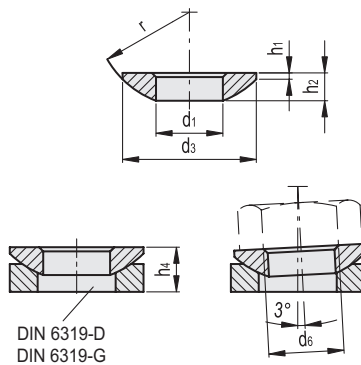
- **DIN 6319-C**: case-hardened steel convex washer (hardening depth 0.2 - 0.4 mm), hardness (550 + 100) HV 10.
- **DIN 6319-D**: case-hardened steel concave washer (hardening depth 0.2 - 0.4 mm), hardness (550 + 100) HV 10.
- **DIN 6319-G**: hardened and tempered steel concave washer, hardness (350 + 80) HV 30.

## FEATURES AND APPLICATIONS

DIN 6319 concave and convex washers are suitable for locking mechanical parts on non-parallel surfaces.

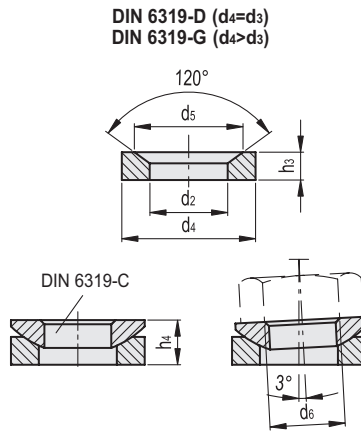


DIN 6319-C



## DIN 6319-C

Code	Description	d1 H13	d6	d3	h1	h2	h4	r	Max limit static load [kN]	
GN.30831	DIN 6319-6.4-C	6.4	M6	12	0.7	2.3	4.2	9	9	1
GN.30835	DIN 6319-8.4-C	8.4	M8	17	0.6	3.2	5.6	12	17	3
GN.30841	DIN 6319-10.5-C	10.5	M10	21	0.8	4	6.5	15	26	5
GN.30845	DIN 6319-13-C	13	M12	24	1.1	4.6	8	17	38	8
GN.30851	DIN 6319-15-C	15	M14	28	1.2	5	8.5	22	53	12
GN.30855	DIN 6319-17-C	17	M16	30	1.3	5.3	9.6	22	73	13
GN.30861	DIN 6319-21-C	21	M20	36	2	6.3	11.7	27	117	22
GN.30865	DIN 6319-25-C	25	M24	44	2.4	8.2	15.2	32	168	43
GN.30871	DIN 6319-31-C	31	M30	56	3.6	11.2	19.2	41	269	110
GN.30875	DIN 6319-37-C	37	M36	68	4.6	14	23.5	50	394	190
GN.30881	DIN 6319-43-C	43	M42	78	6.5	17	29	58	542	305
GN.30885	DIN 6319-50-C	50	M48	92	8	21	35.5	67	714	540



**DIN 6319-D**

Code	Description	d2 H13	d6	d4	d5	h3	h4	Max limit static load [kN]	⚖️
GN.30901	DIN 6319-7.1-D	7.1	M6	12	11	2.8	4.2	9	2
GN.30905	DIN 6319-9.6-D	9.6	M8	17	14.5	3.5	5.6	17	4
GN.30911	DIN 6319-12-D	12	M10	21	18.5	4.2	6.5	26	7
GN.30915	DIN 6319-14.2-D	14.2	M12	24	20	5	8	38	10
GN.30921	DIN 6319-16.5-D	16.5	M14	28	24.8	5.6	8.5	53	15
GN.30925	DIN 6319-19-D	19	M16	30	26	6.2	9.6	73	18
GN.30931	DIN 6319-23.2-D	23.2	M20	36	31	7.5	11.7	117	31
GN.30935	DIN 6319-28-D	28	M24	44	37	9.5	15.2	168	61
GN.30941	DIN 6319-35-D	35	M30	56	49	12	19.2	269	130
GN.30945	DIN 6319-42-D	42	M36	68	60	15	23.5	394	230
GN.30951	DIN 6319-49-D	49	M42	78	70	18	29	542	360
GN.30955	DIN 6319-56-D	56	M48	92	82	22	35.5	714	640

**DIN 6319-G**

Code	Description	d2 H13	d6	d4	d5	h3	h4	Max limit static load [kN]	⚖️
GN.31001	DIN 6319-7.1-G	7.1	M6	17	11	4	4.2	9	6
GN.31005	DIN 6319-9.6-G	9.6	M8	24	14.5	5	5.6	17	14
GN.31011	DIN 6319-12-G	12	M10	30	18.5	5	6.5	26	21
GN.31015	DIN 6319-14.2-G	14.2	M12	36	20	6	8	38	38
GN.31021	DIN 6319-19-G	19	M16	44	26	7	9.6	73	64
GN.31025	DIN 6319-23.2-G	23.2	M20	50	31	8	11.7	117	92
GN.31031	DIN 6319-28-G	28	M24	60	37	10	15.2	168	165
GN.31035	DIN 6319-35-G	35	M30	68	49	12	19.2	269	238