

CHARACTERISTICS

Ambient temperature	-10 ÷ +90 °C	
Fluid	50 µm filtered air, with or without lubrication	
Commutation system	poppet	
Max pressure	10 bar	
Connections	interface for sub-base	
	standard	sensible
Nominal bore (mm)	2,3	1,5
Nominal flow rate (NI/min)	110	55
Force (N)	5	4
Valve body	zamak	
Seals	NBR	
Spool	nickel-plated brass	



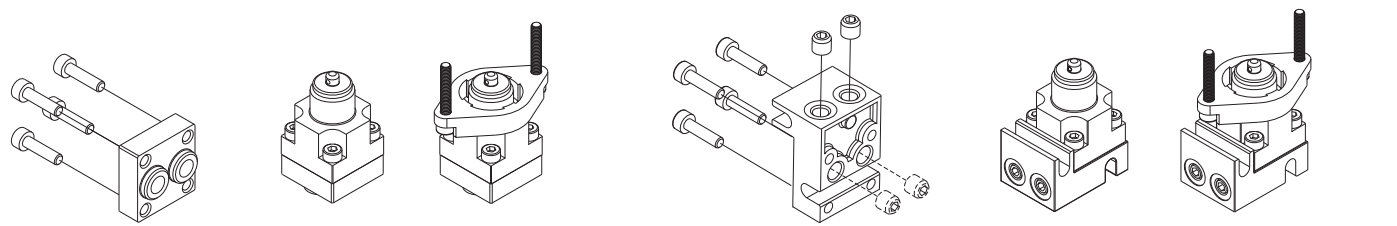
Mechanical push button - spring

Mechanical push button for panel operation - spring

		AI-3500 standard AI-3500S sensible			AI-3500Q standard AI-3500SQ sensible										
		AI-3501 standard AI-3501S sensible			AI-3501Q standard AI-3501SQ sensible										
		AI-3502 standard			AI-3502Q standard										
		AI-3503 2/2 NO Available upon request			AI-3503Q 2/2 NO Available upon request										
AI-3550	AI-3551	AI-3560	AI-3562	AI-3563	AI-3570	AI-3571	AI-3572	AI-3511Q	AI-3514Q	AI-3515Q	AI-3520Q	AI-3524Q	AI-3522Q	AI-3525Q	AI-3526Q
AI-3512Q	AI-3516Q	AI-3517Q	AI-3521Q	AI-3513Q	AI-3514QD	AI-3519Q	AI-3516QD	AI-3523Q							
AI-3511	AI-3514	AI-3515	AI-3520	AI-3522	AI-3524	AI-3525	AI-3526								
AI-3512	AI-3516	AI-3517	AI-3521	AI-3523											
AI-3513	AI-3514D	AI-3519	AI-3516D												

AI-3610

AI-3612



Sub-base with bottom connections M5

Sub-base with side or bottom connections M5

Sub-bases are supplied with M3x12 fixing screws (4 pcs) and M5x5 grub screws (2pcs) to close the unused ways.

Grub screws must be fixed with sealing loctite (243 type), being sure that loctite does not obstruct the ports or sink inside the valve. Grub screws must be screwed until reaching the base surface. Avoid screwing them completely.

AI

Miniature limit switches

Univer limit switches, mounted on sub-bases with threaded connections or with quick couplings, may be combined with different types of manual operators for panel mounting complying with the various need of the plant.



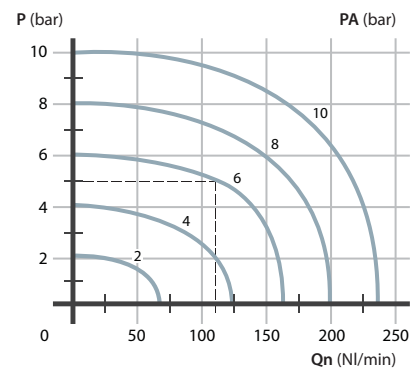
TECHNICAL CHARACTERISTICS

Ambient temperature	-10 ÷ +90 °C
Fluid temperature	max +50 °C
Fluid	defiltered air 50 um not dehumidified, lubricated or not
Commutation system	poppet system
Ways/Positions	2/2 NC, 3/2 NC, 2/2 NO, 3/2 NO
Pressure	max 10 bar
Control	manual, mechanical
Return	mechanical spring
Connections	interface for sub-base
Nominal Ø	2,3 mm (1,5 sensible type)
Nominal flow rate (NI/min)	110 NI/min

CONSTRUCTIVE CHARACTERISTICS

Valve body	zamak
Seals	nitrile rubber
Sub-base	zamak
Spool	nickel-plated brass

Flow rate characteristics



P = Working pressure
 PA = Supply pressure
 Qn = Flow rate

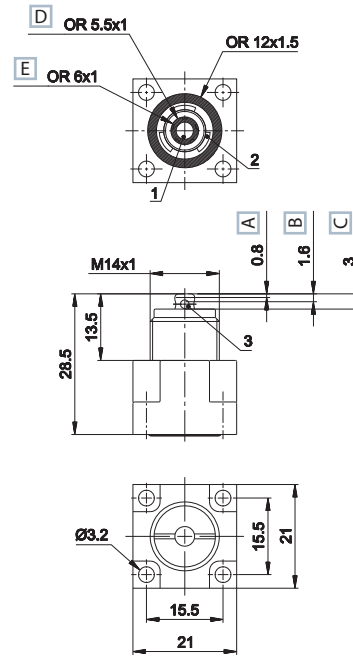
Mechanical push button - spring



- A Pre-stroke
- B Max opening
- C Total stroke
- D 3/2 NC - 3/2 NO - 2/2 NC
- E 2/2 NO

	Symbol	Ø mm	Flow rate NI/min	Force N	Weight Kg	Part no.
3/2 NC		2,3	110	15	0,040	AI-3500
		1,5	55	4	0,040	AI-3500S (a)
3/2 NO		2,3	110	15	0,040	AI-3501
		1,3	45	4	0,040	AI-3501S(a)
2/2 NC		2,3	110	15	0,040	AI-3502
2/2 NO (b)		2,3	110	15	0,040	AI-3503

(a) = sensible (b) = 2/2 NO version available upon request



PNEUMATIC AND MECHANICAL ACTUATORS

	Pneumatic operator	AI-3550	
	Amplified pneumatic operator	AI-3551	
	Roller operator 1 position	AI-3560	
	Ball-push operator 1 position	AI-3562	
	Operator with omni-directional antenna 1 position	AI-3563	
	Roller lever operator 1 posizione	AI-3570	
	Articulated roller operator 1 position Complete actuation with stroke 2,5 mm, max stroke 4,7 mm	AI-3571	
	Key operator 1 position	AI-3572	

MANUAL PUSH

	Recessed button	<ul style="list-style-type: none"> ■BLACK AI-3511 ■RED AI-3512 ■GREEN AI-3513 	
	Head button	<ul style="list-style-type: none"> ■RED AI-3514 ■BLACK AI-3516 ■RED AI-3514D ■BLACK AI-3516D 	
	Button	<ul style="list-style-type: none"> ■GREEN AI-3515 ■RED AI-3517 ■BLACK AI-3519 	
	Accident prevention rotating selector	<ul style="list-style-type: none"> ■BLACK AI-3520 ■BLACK AI-3521 	
	Rotating lever selector	<ul style="list-style-type: none"> ■BLACK AI-3522 ■BLACK AI-3523 	
	Lever operator	■BLACK AI-3524	
	Omni-directional operator	■BLACK AI-3525	
	Push-pull operator	■BLACK AI-3526	

For actuators dimensions see section "Accessories>Actuators"

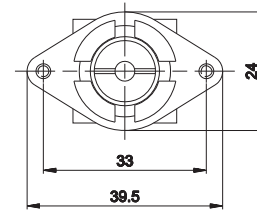
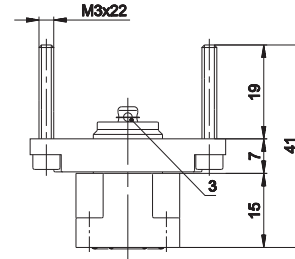
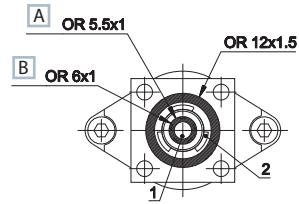
Mechanical push button for panel mounting - spring



A 3/2 NC - 3/2 NO - 2/2
B 2/2 NO

	Symbol	Ø mm	Flow rate NI/min	Force N	Weight Kg	Part no.
3/2 NC		2,3	110	15	0,055	AI-3500Q
		1,5	55	4	0,055	AI-3500SQ (a)
3/2 NO		2,3	110	15	0,055	AI-3501Q
		1,3	45	4	0,055	AI-3501SQ (a)
2/2 NC		2,3	110	15	0,055	AI-3502Q
2/2 NO (b)		2,3	110	15	0,055	AI-3503Q

(a) = sensible (b) = upon request only 2/2 NO version



1 = Supply port
2 = Use
3 = Exhaust

MANUAL PUSH

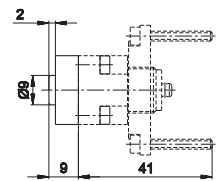
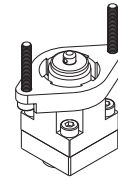
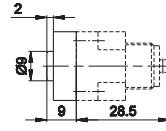
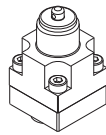
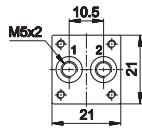
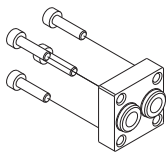
	Recessed button	<ul style="list-style-type: none"> ■BLACK AI-3511Q ■RED AI-3512Q ■GREEN AI-3513Q
	Head button	<ul style="list-style-type: none"> ■RED AI-3514Q ■BLACK AI-3516Q ■RED AI-3514QD ■BLACK AI-3516QD
	Button	<ul style="list-style-type: none"> ■GREEN AI-3515Q ■RED AI-3517Q ■BLACK AI-3519Q
	Accident prevention rotating selector	<ul style="list-style-type: none"> ■BLACK AI-3520Q ■BLACK AI-3521Q
	Rotating lever selector	<ul style="list-style-type: none"> ■BLACK AI-3522Q ■BLACK AI-3523Q
	Lever operator	<ul style="list-style-type: none"> ■BLACK AI-3524Q
	Omni-directional operator	<ul style="list-style-type: none"> ■BLACK AI-3525Q
	Push-pull operator	<ul style="list-style-type: none"> ■BLACK AI-3526Q

For actuators dimensions see section "Accessories>Actuators"

AI-3610

AI-3610 + AI-3500

AI-3610 + AI-3500Q

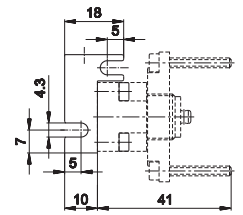
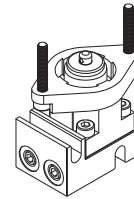
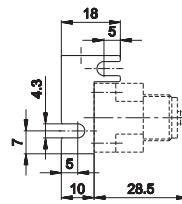
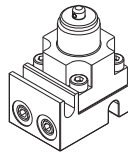
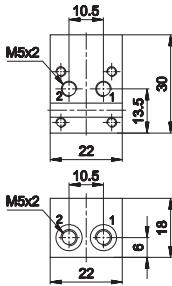
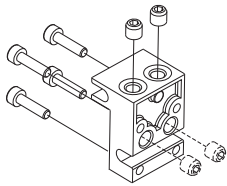


Sub-base with M5 threaded connections
weight: 0,020 Kg

AI-3612

AI-3612 + AI-3500

AI-3612 + AI-3500Q



Sub-base with side or dorsal consumptions and threaded connections M5
weight: 0,020 Kg

Part numbers include M3x12 fixing screws (4 pcs) and M5x5 dowel pins to close the unused ways.
The M5x5 dowel pins must be mounted with loctite (243 type). Be sure that loctite does not obstruct the ports or sinks inside the valve.
The dowel pins must be screwed till reaching the base surface. Avoid screwing them completely.