

GN 187.1 | Cases for GN 187.4

Steel or stainless steel

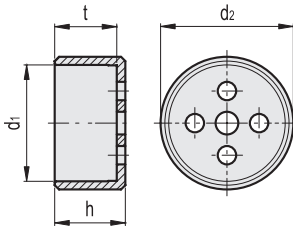


MATERIAL

Black-oxide steel or AISI 303 stainless steel.

FEATURES AND APPLICATIONS

GN 187.1 cases are designed to optimise the use of toothed clamping elements GN 187.4 (see page 948) and GN 187.4-NI (see page 950).



GN 187.2 | Push springs for GN 187.4

Stainless steel

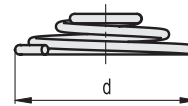


MATERIAL

Stainless steel.

FEATURES AND APPLICATIONS

GN 187.2 push springs are designed to optimise use of GN 187.4 (see page 948) and GN 187.4-NI (see page 950).



GN 187.1-ST



Code	Description	d1 +0.2	d2-0.5 +0.3	h	t	⚖️	Toothed clamping elements
GN.31351	GN 187.1-22-ST	22	26	14.5	12.5	20	GN 187.4-22
GN.31352	GN 187.1-27-ST	27	31	16.5	14.5	28	GN 187.4-27
GN.31353	GN 187.1-32-ST	32	36	19.5	17.5	38	GN 187.4-32
GN.31354	GN 187.1-40-ST	40	44	24.5	22.5	59	GN 187.4-40

Code	Description	d	Max load [N]	⚖️	Toothed clamping elements
GN.31361	GN 187.2-15	15	40	1	GN 187-22
GN.31362	GN 187.2-18	18	45	1	GN 187-27
GN.31363	GN 187.2-23	23	65	2	GN 187-32
GN.31364	GN 187.2-29	29	90	4	GN 187-40

GN 187.1-NI



Code	Description	d1 +0.2	d2-0.5 +0.3	h	t	⚖️	Toothed clamping elements
GN.31356	GN 187.1-22-NI	22	26	14.5	12.5	21	GN 187.4-22
GN.31357	GN 187.1-27-NI	27	31	16.5	14.5	29	GN 187.4-27
GN.31358	GN 187.1-32-NI	32	36	19.5	17.5	39	GN 187.4-32
GN.31359	GN 187.1-40-NI	40	44	24.5	22.5	60	GN 187.4-40