

PCB Mounting

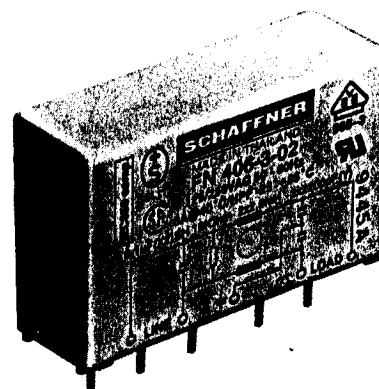
Order code	Manufacturer code	Description
26-4520	FN406-0.5/02	0.5A FN406-0.5/0.2 PCB FILTER
26-4525	FN406-1/02	1A FN406-1/0.2 PCB FILTER
26-4530	NHRS504	3A FN406-3/0.2 PCB FILTER
26-4530	FN406-3/02	3A FN406-3/0.2 PCB FILTER
26-4535	FN406-6/02	6A FN406-6/0.2 PCB FILTER

PCB Mounting	Page 1 of 3
The enclosed information is believed to be correct, Information may change 'without notice' due to product improvement. Users should ensure that the product is suitable for their use. E. & O. E.	Revision A 04/07/2003

Ultra-compact EMC filter

FN 406

The FN 406 PCB-mounting EMC filter offers high performance in an exceptionally compact form, and is ideal for equipment applications where space is at a premium. With a footprint of just 15 x 45 mm, it greatly reduces the PCB area required compared with using discrete components, with a height profile which does not exceed the capacitors and transformers typically used in circuitry such as switched mode power supplies. Performance is also enhanced, thanks to an aluminium housing - providing excellent RF shielding to protect against coupling effects from nearby components.



- 0.5-6A current ratings
- aluminium case
- very compact PCB-mounting design
- low profile

Approvals



Current ratings A at 40°C (25°)		Inductance L mH	Housing	Weight g
0.5	(0.6)	24	A6	36
1	(1.2)	12	A6	36
3	(3.5)	2.5	A6	36
6	(6.9)	0.78	A6	36

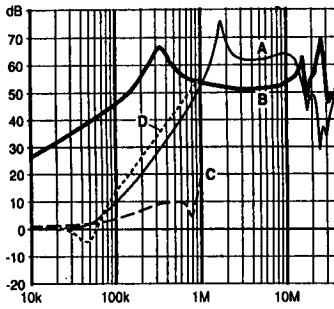
Capacitance Cx nF		Cy nF	Res. R MΩ	Maximum leakage μA/phase	Maximum operating voltage VAC Hz		Operating frequency Hz	Hipot test voltage PN→E P→N VAC VAC	
100	2.2		1	190	250	50/60	DC to 400	2000	1700

Part No	Current Rating
FN 406-0.5/02	0.5A
FN 406-1/02	1.0A
FN 406-3/02	3.0A
FN 406-6/02	6.0A

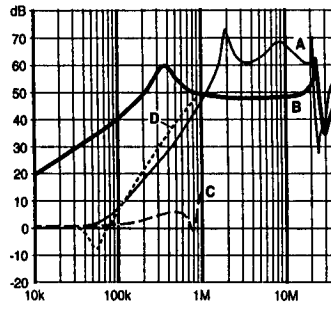
Insertion loss

Per CISPR 17; A = 50Ω/50Ω sym, B = 50Ω/50Ω asym, C = 0.1Ω/100Ω sym, D = 100Ω/0.1Ω sym

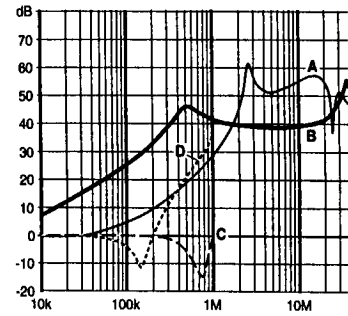
0.5 amp types



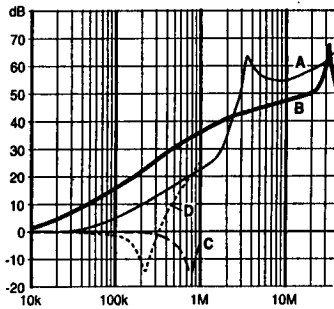
1 amp types



3 amp types

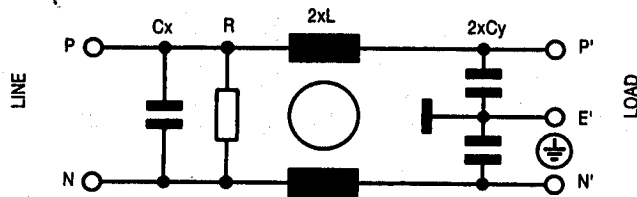


6 amp types



Electrical schematics

FN 406



See tables for component values.

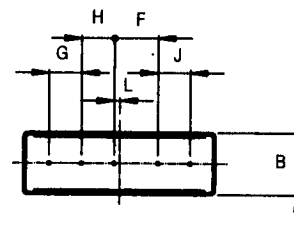
Mechanical Data

FN 406 Housing A6

		Tol.* mm
A	45 ± 0.2	± 0.5
B	15	± 0.5
C	28	± 0.3
D	1.5 ± 0.3	± 0.2
E		± 0.5
F	10.16 ± 0.1	± 0.2
G	7.62	± 0.1
H	7.62	± 0.1
J	7.62	± 0.1
K		± 0.1
L	1.27	-
M		± 0.1

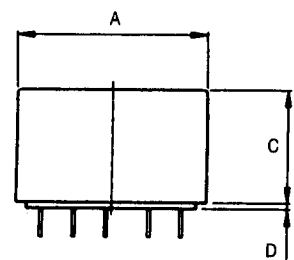
* Measurements share this common tolerance unless otherwise stated.

BOTTOM VIEW

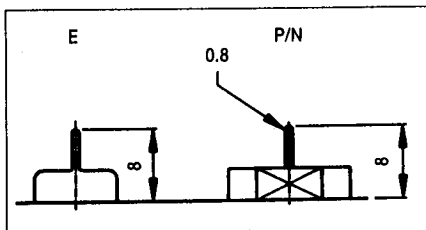


Housing A6

SIDE VIEW



Housing A6



Type /02

Pin suitable for direct assembly onto through-hole printed-circuit boards