



ASISAFE MODULE S22,5F TWO SAFE INPUTS 2FDI AND TWO STANDARD OUTPUTS 2DO SCREW TERMINAL

Figure similar

General technical data:		
Design of the product		Safe SlimLine module S22,5F, 2F-DI/2DO
Type		2 inputs, safe, 2 outputs, standard
I/O configuration		7
ID/ID2 code		B/F
Protocol is supported AS-interface protocol		Yes
Type of electrical connection of the inputs and outputs		screw terminal
operating voltage according to AS-Interface spezifikation	V	26.5 ... 31.5
AS interface total current input max	mA	250
Addressing		front addressing socket
Equipment marking acc. to DIN 40719 extended according to IEC 204-2 acc. to IEC 750		A
Equipment marking acc. to DIN EN 61346-2		A
Inputs:		
Number of digital inputs safety-related		2
Inputs		mechanical switching contact contact closed contact open
<ul style="list-style-type: none"> <li>• sensors</li> <li>• switching level High</li> <li>• switching level Low</li> </ul>		
Input current at digital input for signal <1> minimum	mA	5
Outputs:		
Number of digital outputs		2
Type of voltage of output voltages		DC

<b>Outputs external power supply 24 V DC</b>		via AS-Interface
<b>Type of switching output</b>		solid state
<b>Property of the output Short-circuit proof</b>		Yes
<b>Outputs</b>		
• short-circuit protection		built-in
• induction protection		built-in
• watchdog		built-in
<b>Status display</b>		
• display of I/Os		yellow LED
• display of AS-Interface/diagnostics		green/red LED

#### Ambient conditions:

<b>Ambient temperature</b>		
• during operation	°C	-20 ... +70
• during storage	°C	-40 ... +85
<b>Protection class IP</b>		IP20

#### Mechanical data:

<b>Width</b>	mm	22.5
<b>Height</b>	mm	101.6
<b>Depth</b>	mm	91
<b>Mounting type</b>		standard rail mounting/wall mounting

#### Certificates/ approvals:

General Product Approval	Functional Safety/Safety of Machinery
--------------------------	---------------------------------------



[Type Examination Certificate](#)

Declaration of Conformity	Shipping Approval
---------------------------	-------------------



Shipping Approval	other			
-------------------	-------	--	--	--



[Environmental Confirmations](#)

[Confirmation](#)

[Declaration of Conformity](#)

[other](#)

### Further information

**Information- and Downloadcenter (Catalogs, Brochures,...)**

<http://www.siemens.com/industrial-controls/catalogs>

**Industry Mall (Online ordering system)**

<http://www.siemens.com/industrymall>

**Cax online generator**

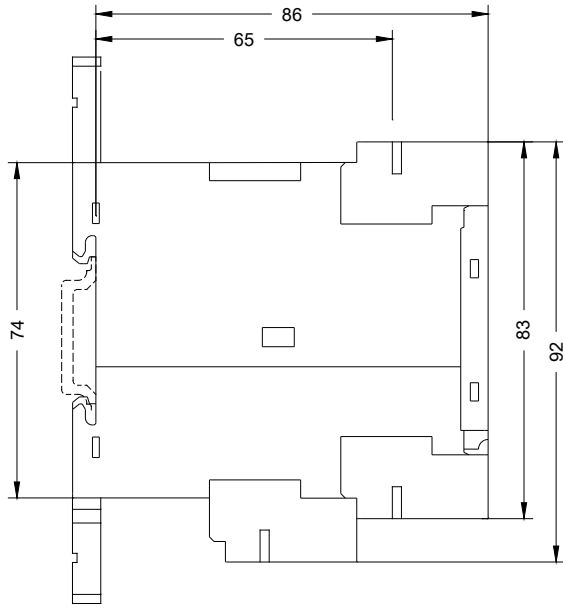
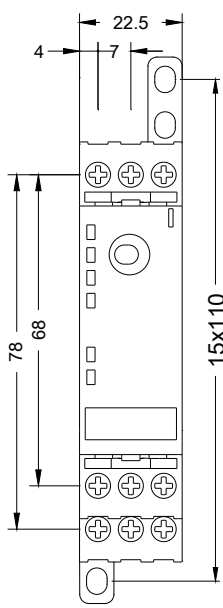
<http://support.automation.siemens.com/WW/CAXorder/default.aspx?lang=en&mlfb=3RK14050BE000AA2>

**Service&Support (Manuals, Certificates, Characteristics, FAQs,...)**

<http://support.automation.siemens.com/WW/view/en/3RK14050BE000AA2/all>

**Image database (product images, 2D dimension drawings, 3D models, device circuit diagrams, EPLAN macros, ...)**

<http://www.automation.siemens.com/bilddb/index.aspx?attID9=3RK14050BE000AA2&lang=en>



last modified:

09.03.2015