

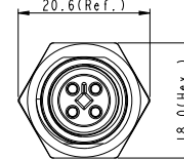
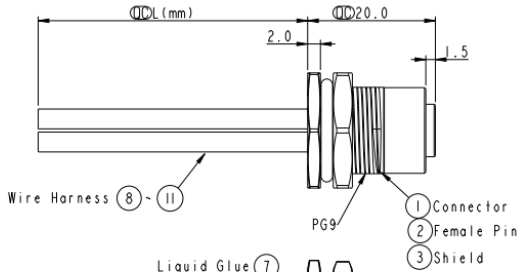
REV.	ECN NO.	DATE	SIGN	DESCRIPTION
A	Initial Release	2015-03-04	Cary	Change Rev. 01 to Rev.A

ALTW
CONFIDENTIAL
2015-03-04
R&D DEPT.

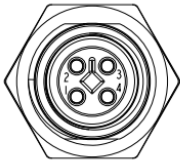


MI2T-04PFFS-SF8BXX

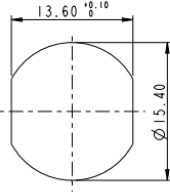
XX: 150-1500mm
1S: 150mm
30: 300mm
50: 500mm
A0: 1000mm
A5: 1500mm
Wire Length(L): 150-1500mm



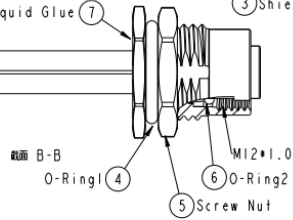
ALTW
R&D DEPT.
CONFIDENTIAL
2015.04.27
ISSUED



Pin Assignment
Front View



Recommended
Panel Cut-Out



截面 B-B

4	Black	黑
3	Blue	藍
2	White	白
1	Brown	棕
Conn.	Wire Color	Pin Out

- Note:
- ① Important Dimension.
 - Waterproof Rate: IP68.
 - IP68: 1M Depth Of Water In 24hours.
 - Housing: PA66, UL94V-0, Black.
 - Female Pin: Copper Alloy, Gold Plated.
 - Shield: Zinc Alloy, Nickel Plated.
 - Panel Nut: Zinc Alloy, Nickel Plated.
 - O-Ring1: Viton, Black.
 - O-Ring2: Viton, Green.
 - Wire Harness: UL1015 16AWG(1.5mm²).
 - Rated Voltage: 60V DC.
 - Rated Current at 40°C: 12A
 - Operation Temperature: -40-85°C.
 - For Panel Thickness Max 4.5mm.
 - Nut Torque: 4-6 Kgf.cm(0.4-0.6N.m).
 - Wire harness Tolerance: 150-300 ±15mm
301-1000 ±20mm
Over1000 ±40mm

UNIT: mm	TITLE	ITEM NO.	DRAWN BY	DATE
TOLERANCE .1 ±0.25 .XX ±0.1 .XXX ±0.05 ANGLES ±1°	MI2 T-Code 4Pin Female Type SCALE: 2:1 SIZE: A4 SHEET: 1 of 1 REV: A RE-REV: A.4	Amphenol LTW 安費諾亮泰企業股份有限公司	CARY Yu Long Jerry	2015-03-04 2015-03-04 2015-03-04

THIS DOCUMENT IS SUBJECT TO CHANGE WITHOUT NOTICE. IT IS CONFIDENTIAL AND A PROPERTY OF AMPHENOL LTW. DISCLOSED TO THIRD PARTY HAS TO BE AUTHORIZED BY AMPHENOL LTW.