

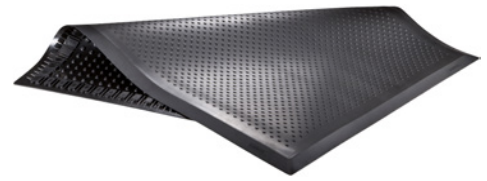
## Workplace mat made of nitrile rubber, oil-resistant and flame-retardant

Diamond structure, height 20 mm

**ergolastec** soft footing.

### Application:

The modern and ergonomic workplace mats protect the joints and spine, prevent slipping and thus ensure optimum sure-footedness in the workplace. The mats are ideal for walking and standing workplaces such as at workbenches, conveyor belts, assembly tables and turning and milling machines. The additional flame retardant effect means that they can be used in workplaces with weld splatter and flying sparks without problems.



### Advantage:

- Due to the puzzle system, any surface can be laid out
- The easy solution for increased safety, health, comfort and productivity
- firm grip for secure footing and high position stability
- reduced muscular fatigue caused by increased physical activity
- prevention of adverse effects on health through heat insulation

<b>Art. no.</b>	<b>50225 764</b>
<b>Surface structure</b>	Diamond / closed
<b>Material</b>	Nitrile rubber
<b>Length</b>	1242 mm
<b>Width</b>	1000 mm
<b>Material thickness</b>	20 mm
<b>Mat design</b>	Individual mat, Puzzle piece, type E
<b>Resistance against</b>	Oil, Acid, Fats, Petrol, Coolant
<b>Min. temperature resistance</b>	-35 °C
<b>Max. temperature resistance</b>	95 °C
<b>Suitable for wet areas</b>	Yes
<b>Antistatic</b>	No
<b>Anti-fatigue</b>	Yes
<b>Non-slip</b>	Yes
<b>Compliant with REACH</b>	Yes
<b>Colour</b>	Black