

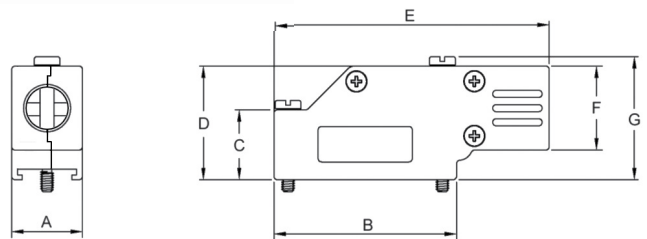
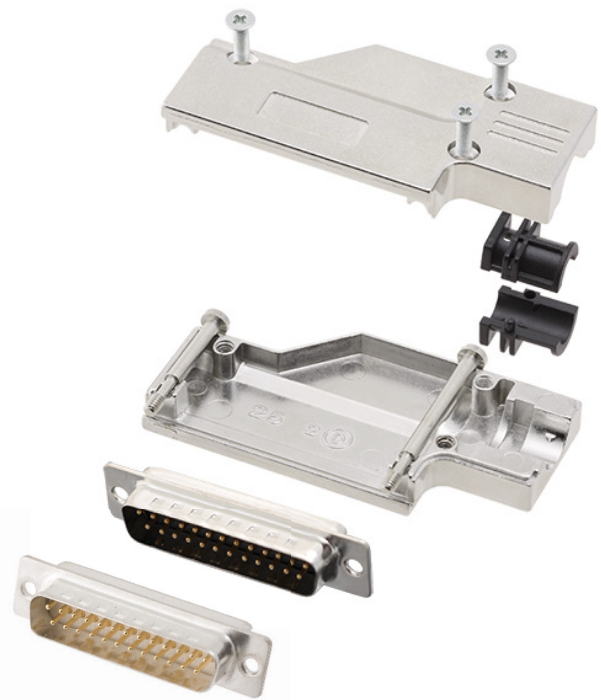
TECHNICAL SPECIFICATIONS

D-Sub Hood:

Material: Zinc, Nickel Plated
 Operating Temperature: -40°C to +120°C
 Cable Entry: 90° Side Entry
 Jackscrews: UNC 4-40
 Cable O.D: Up to 11,5mm
 Type of grommets: 2 piece Plastic Ferrule Kit

Male D-Sub Solder Cup:

Insulator: PBT, Black, UL94 V-0
 Shell: Steel, Tin Plated
 Contact pins: Copper Alloy
 Stamped & Formed Pins: Class 3, 100 inserts min.
 Machined Contact Pins: Class 1, 500 inserts min.
 Contact Plating: Selective Gold over Nickel
 Operating Temperature: -55°C to +105°C
 Withstanding voltage: 1000V for 1 minute
 Insulator resistance: 1000MΩ min.



Features:

- Available in sizes 9-15-25-37
- Suitable for any common Sub-D connector
- Re-Openable

Size	A	B	C	D	E	F	G
9	15,0	31,0	15,0	24,0	51,0	18,0	26,5
15	15,3	39,2	15,0	24,0	59,0	18,0	26,5
25	16,0	54,0	23,0	34,5	73,0	24,5	37,0
37	16,0	70,5	23,0	34,5	89,5	24,5	37,0

Ordering information - Black Insulator:

Size:	P/N - Kitted:	Class 3 - 100 inserts min.
9-way	6355-0065-01	DCMR09-FK-DBP-K
15-way	6355-0065-02	DCMR15-FK-DBP-K
25-way	6355-0065-03	DCMR25-FK-DBP-K
37-way	6355-0065-04	DCMR37-FK-DBP-K

Size:	P/N - Kitted:	Class 1 - 500 inserts min.
9-way	6355-0065-21	DCMR09-FK-DMP-K
15-way	6355-0065-22	DCMR15-FK-DMP-K
25-way	6355-0065-23	DCMR25-FK-DMP-K
37-way	6355-0065-24	DCMR37-FK-DMP-K

Ordering information - White Insulator:

Size:	P/N - Kitted:	Class 3 - 100 inserts min.
9-way	6355-8065-01	DCMR09-FK-DBP-W-K
15-way	6355-8065-02	DCMR15-FK-DBP-W-K
25-way	6355-8065-03	DCMR25-FK-DBP-W-K
37-way	6355-8065-04	DCMR37-FK-DBP-W-K

Size:	P/N - Kitted:	Class 1 - 500 inserts min.
9-way	6355-8065-21	DCMR09-FK-DMP-W-K
15-way	6355-8065-22	DCMR15-FK-DMP-W-K
25-way	6355-8065-23	DCMR25-FK-DMP-W-K
37-way	6355-8065-24	DCMR37-FK-DMP-W-K

