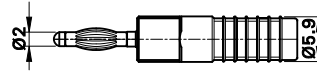
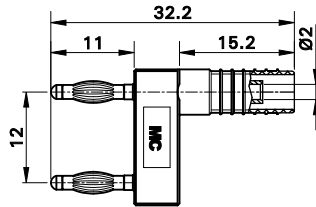
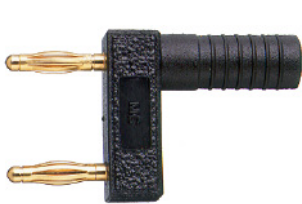


**KS2-12L/1SA/...**

Isolierte Ø 2 mm-Verbindungsstecker aus Messing. Ausgestattet mit federnder Kontaktlamelle für vibrationsfeste Kontakte – ideal für den Einsatz z. B. in der Kfz-Elektrik bei Testfahrten und Service. Starre Ø 2 mm-Buchse im Isolierkörper, geeignet zur Aufnahme federnder Ø 2 mm-Stecker mit starrer Isolierhülse.

**KS2-12L/1SA/...**

Insulated Ø 2 mm connecting plugs, made of brass. Equipped with spring-loaded Multilam to ensure vibration-proof contacts – ideal, for instance, in the automotive field for test drives and servicing. Ø 2 mm rigid socket in insulator accepting spring-loaded Ø 2 mm plugs with rigid insulating sleeve.



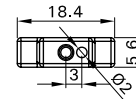
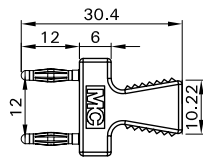
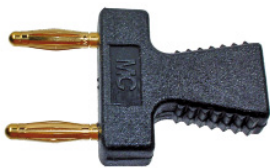
| Typ<br>Type   | Bestell-Nr.<br>Order No. | Bemessungsspannung/-strom<br>Rated voltage/current | Steckabstand<br>Plug spacing |    | Farbe<br>Colour |
|---------------|--------------------------|--|------------------------------|----|-----------------|
| KS2-12L/1SA/N | 63.9845-21               | 30 VAC ~ 60 VDC / 10 A                             | 12 mm                        | Ni | 21              |
| KS2-12L/1SA/A | 63.9848-21               | 30 VAC ~ 60 VDC / 10 A                             | 12 mm                        | Au | 21              |

**KS2-12L/A KS2-12L/N**

Isolierte Ø 2 mm-Verbindungsstecker mit starrer Ø 2 mm-Buchse im Isoliergriff. Vergoldete (Au) und vernickelte (Ni) Versionen erhältlich.

**KS2-12L/A KS2-12L/N**

Insulated Ø 2 mm jumper plugs with rigid Ø 2 mm socket in handling part. Available in gold- (Au) and nickel- (Ni) plated versions.



| Typ<br>Type | Bestell-Nr.<br>Order No. | Bemessungsspannung/-strom<br>Rated voltage/current | Steckweite<br>Plug spacing | Passend für<br>Suitable for |    | *Farben<br>*Colours          |
|-------------|--------------------------|--|----------------------------|-----------------------------|----|------------------------------|
| KS2-12L/A   | 63.9354-*                | 33 VAC ~ 70 VDC / 10 A                             | 12 mm                      | BL2-12/20/A                 | Au | 21 22 23 24 25 <sup>1)</sup> |
| KS2-12L/N   | 63.9355-*                | 33 VAC ~ 70 VDC / 10 A                             | 12 mm                      | BL2-12/20/A                 | Ni | 21 22 23 24 25 <sup>1)</sup> |

<sup>1)</sup> Andere Farben auf Anfrage.

<sup>1)</sup> Other colours on request.