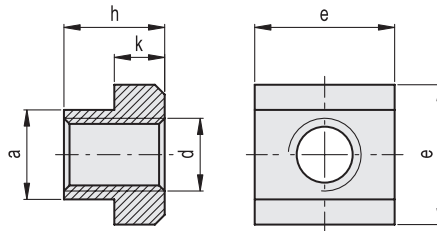
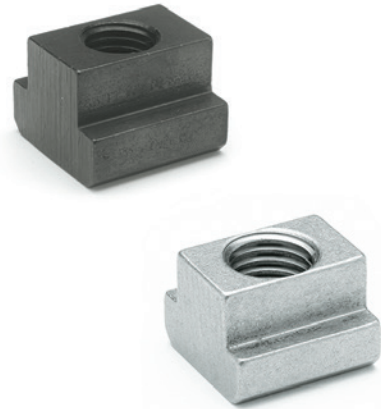




STANDARD EXECUTIONS

- **DIN 508**: black-oxide steel class 10 (tensile strength 1200 N/mm<sup>2</sup>).
- **DIN 508-NI**: AISI 303 stainless steel.



DIN 508

Code	Description	a-0.3-0.5	d	e	h	k	Groove width DIN 650	⚖️
GN.31602	DIN 508-5-M4-10	5	M4	9-0.5	6.5	3-0.3	5	2
GN.31605	DIN 508-6-M5-10	6	M5	10-0.5	8	4-0.5	6	4
GN.31611	DIN 508-8-M6-10	8	M6	13-0.5	10	6-0.5	8	9
GN.31615	DIN 508-10-M6-10	10	M6	15-0.5	12	6-0.5	10	14
GN.31616	DIN 508-10-M8-10	10	M8	15-0.5	12	6-0.5	10	12
GN.31621	DIN 508-12-M10-10	12	M10	18-0.5	14	7-0.5	12	20
GN.31625	DIN 508-14-M12-10	14	M12	22-0.5	16	8-0.5	14	34
GN.31631	DIN 508-16-M12-10	16	M12	25-0.5	18	9-0.5	16	55
GN.31632	DIN 508-16-M14-10	16	M14	25-0.5	18	9-0.5	16	51
GN.31633	DIN 508-18-M12-10	18	M12	28-0.5	20	10-0.5	18	57
GN.31635	DIN 508-18-M16-10	18	M16	28-0.5	20	10-0.5	18	69
GN.31641	DIN 508-20-M16-10	20	M16	32-0.5	24	12-0.5	20	116
GN.31642	DIN 508-20-M18-10	20	M18	32-0.5	24	12-0.5	20	110
GN.31645	DIN 508-22-M20-10	22	M20	35-0.5	28	14-0.5	22	149
GN.31651	DIN 508-24-M22-10	24	M22	40-0.5	32	16-0.5	24	228
GN.31655	DIN 508-28-M24-10	28	M24	44-1	36	18-1	28	314

DIN 508-NI



Code	Description	a-0.3-0.5	d	e	h	k	Groove width DIN 650	⚖️
GN.31711	DIN 508-8-M6-NI	8	M6	13	10	6	8	9
GN.31716	DIN 508-10-M8-NI	10	M8	15	12	6	10	12
GN.31721	DIN 508-12-M10-NI	12	M10	18	14	7	12	20
GN.31725	DIN 508-14-M12-NI	14	M12	22	16	8	14	35
GN.31732	DIN 508-16-M14-NI	16	M14	25	18	9	16	49
GN.31735	DIN 508-18-M16-NI	18	M16	28	20	10	18	69