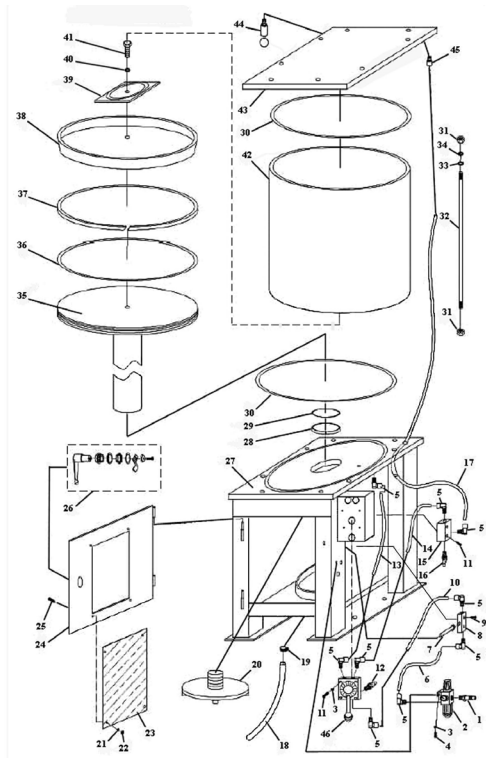


Parts Information: Pneumatic Oil Filter Crusher Model No: HFC08.V2



Item	Part No.	Description
1	HFC08.V2-01	CONNECTION
2	HFC08.V2-02	REGULATOR WITH FILTER
3	SWM5.SB	SPRING WASHER M5 BLACK (SINGLE)
4	SCB510.SB	SOCKET HEAD CAP SCREW M5x10 BLACK
5	HFC08.V2-05	ELBOW CONNECTOR
6	HFC08.V2-06	AIR PIPE 1~ (8*280mm)
7	HFC08.V2-07	AIR SWITCH ROD
8	HFC08.V2-08	AIR SWITCH
9	SCB422.S	SOCKET CAP BOLT ZINC M4X22
10	HFC08.V2-10	AIR PIPE 2~ (8*235mm)
11	SCB530.SB	SOCKET HEAD CAP SCREW M5x30 BLACK
12	HFC08.V2-12	MUFFLER (1/4")
13	HFC08.V2-13	AIR PIPE 3 (8*250mm)
14	HFC08.V2-14	AIR PIPE 4 (8*220mm)
15	HFC08.V2-15	QUICK VENT VALVE
16	HFC08.V2-16	MUFFLER (3/8")
17	HFC08.V2-17	AIR PIPE 5 (8*500mm)
18	HFC08.V2-18	DRAIN HOSE
19	HFC08.V2-19	CLAMP
20	HFC08.V2-20	CRUSHER PLATE ASS'Y
21	FWM4.S	FLAT WASHER M4 SINGLE
22	NLN4.S	NYLOC NUT M4 ZINC DIN 985 (SINGLE)
23	HFC08.V2-23	PERSPEX SCREEN
24	HFC08.V2-24	DOOR

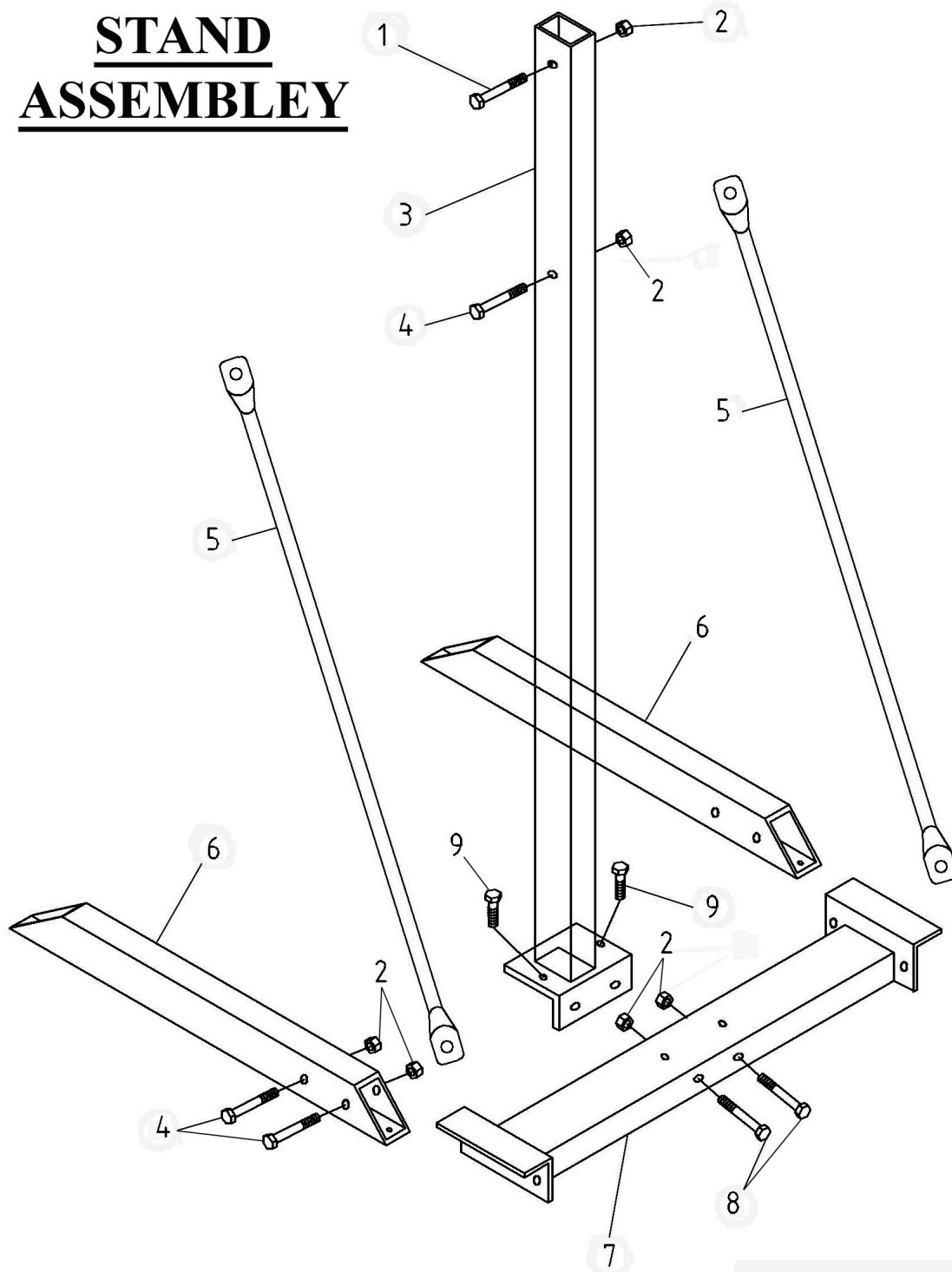
Item	Part No.	Description
25	MSP410.S	MACHINE SCREW PAN HEAD PHILLIPS M4x10mm
26	HFC08.V2-26	LOCK ASS'Y
27	HFC08.V2-27	SUPPORT FRAME ASS'Y
28	HFC08.V2-28	GUIDE RING
29	PBS90.18	O-RING (60 x 3.1)
30	HFC08.V2-30	O-RING (300*3.1)
31	SN12.S	STEEL NUT M12 ZINC DIN934(SINGLE)
32	HFC08.V2-32	SHAFT FOR CYLINDER
33	FWM12.S	FLAT WASHER M12 SINGLE
34	YK509FAH.06	FLAT WASHER M12
35	HFC08.V2-35	PISTON ROD ASS'Y
36	HFC08.V2-36	O-RING (300*5)
37	HFC08.V2-37	GUIDE RING
38	HFC08.V2-38	SEAL RING
39	HFC08.V2-39	PLATE ASS'Y
40	SWM10.SB	SPRING WASHER M10 BLACK(SINGLE)
41	SS1020.S	HEX HEAD SET SCREW M10x20mm SINGLE
42	HFC08.V2-42	AIR CYLINDER
43	HFC08.V2-43	UPPER COVER ASS'Y
44	HFC08.V2-44	SAFETY VALVE
45	HFC08.V2-45	CONNECTOR (1/4")
46	HFC08.V2-46	CONTROL VALVE
	HFC08.V2-47	STAND COMPLETE

NOTE: It is our policy to continually improve products and as such we reserve the right to alter data, specifications and component parts without prior notice.

IMPORTANT: No liability is accepted for incorrect use of product.

WARRANTY: Guarantee is 12 months from purchase date, proof of which will be required for any claim.

STAND ASSEMBLY



Item	Part No.	Description
S1	HFC08.V2-S1	BOLT M12X85
S2	NLN12.S	NYLOC NUT M12 ZINC DIN 985 (SINGLE)
S3	HFC08.V2-S3	UPRIGHT ASS'Y
S4	HCC08.15	BOLT (M12*70)
S5	HFC08.V2-S5	SUPPORT BAR

Item	Part No.	Description
S6	HFC08.V2-S6	LEG
S7	HFC08.V2-S7	BASE ASS'Y
S8	HFC08.V2-S8	BOLT M12*110
S9	HFC08.V2-S9	BOLT M8*20

NOTE: It is our policy to continually improve products and as such we reserve the right to alter data, specifications and component parts without prior notice.

IMPORTANT: No liability is accepted for incorrect use of product.

WARRANTY: Guarantee is 12 months from purchase date, proof of which will be required for any claim.