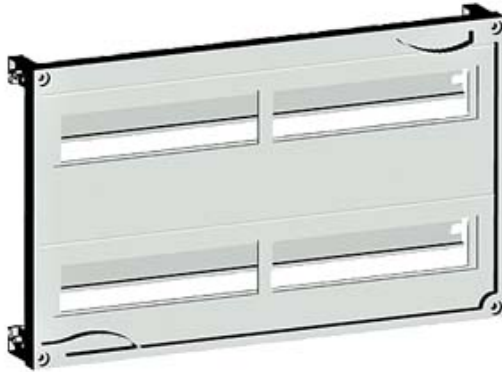


ALPHA 400/630 DIN, KIT F. INSTALL. MOUNTING  
 DEVICE WITH ROW DISTANCE 125 MM H=300  
 W=250



## Accessories

accessories	others
-------------	--------

General Product Approval	Declaration of Conformity	Test Certificates
--------------------------	---------------------------	-------------------



[other](#)



[Special Test Certificate](#)

[Type Test Certificates/Test Report](#)

## Further information

**Information- and Downloadcenter (Catalogs, Brochures,...)**  
<http://www.siemens.com/lowvoltage/catalogs>

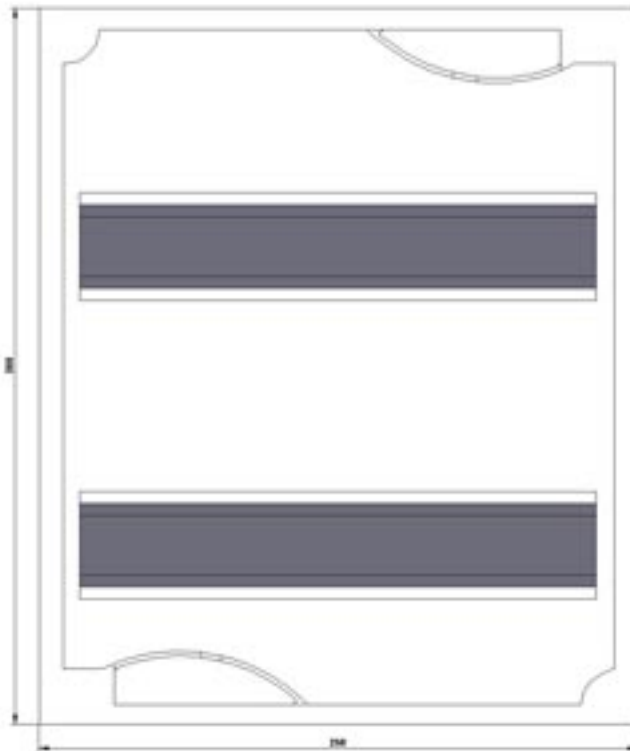
**Industry Mall (Online ordering system)**  
<https://eb.automation.siemens.com/mall/en/WW/Catalog/Product/8GK43012KK12>

**Service&Support (Manuals, Certificates, Characteristics, FAQs,...)**  
<http://support.automation.siemens.com/WW/view/en/8GK43012KK12/all>

**Image database (product images, 2D dimension drawings, 3D models, device circuit diagrams, ...)**  
[http://www.automation.siemens.com/bilddb/cax\\_en.aspx?mlfb=8GK43012KK12](http://www.automation.siemens.com/bilddb/cax_en.aspx?mlfb=8GK43012KK12)

**CAX-Online-Generator**  
<http://www.siemens.com/cax>

**Tender specifications**  
<http://ausschreibungstexte.siemens.com/tiplv>



last modified:

11.03.2015