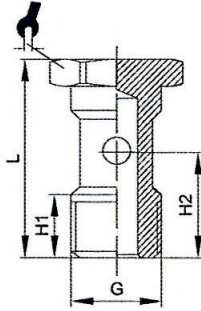


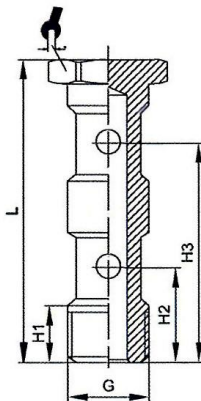
Betriebstemperatur: -20 °C bis +70 °C
 Arbeitsdruck: -0,98 bar bis 16 bar - abhängig vom Druckbereich des eingesetzten Schlauches
 Medium: Druckluft
 Gewinde: G-Gewinde nach DIN EN ISO 228-1
 Empfohlener Schlauch: PA und PU
 Anwendungsbereich: Druckluftanlagen, Vakuum



762.018

Hohlschraube, einfach

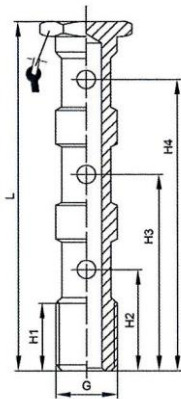
Typen Nr.	Artikel Nr.	G mm	H1 mm	H2 mm	L mm	SW mm
762.005	108822	M5	6,0	9,6	17,5	8
762.018	108823	G 1/8	9,0	15,0	28,0	14
762.014	108824	G 1/4	12,0	18,0	33,0	17
762.038	108825	G 3/8	13,0	21,0	36,0	19



763.018

Hohlschraube, zweifach

Typen Nr.	Artikel Nr.	G mm	H1 mm	H2 mm	H3 mm	L mm	SW mm
763.018	108826	G 1/8	9,0	15,0	31,0	44,5	14
763.014	108827	G 1/4	11,0	17,0	36,0	51,5	17
763.038	108828	G 3/8	14,0	20,5	43,0	58,1	19



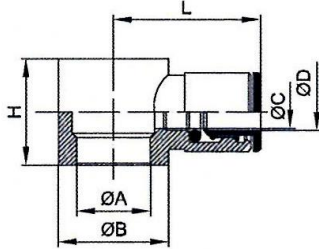
764.018

Hohlschraube, dreifach

Typen Nr.	Artikel Nr.	G mm	H1 mm	H2 mm	H3 mm	H4 mm	L mm	SW mm
764.018	108829	G 1/8	9,0	16,0	32,5	48,0	60,0	14
764.014	108830	G 1/4	12,0	18,5	37,0	55,5	70,5	17
764.038	108831	G 3/8	13,0	20,5	44,0	65,0	80,0	19

Dichtmaterial:

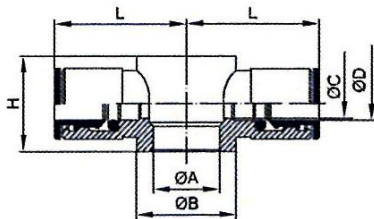
NBR



765.018-4

Ringstück, einfach

Typen Nr.	Artikel Nr.	ØD mm	G mm	ØA mm	ØB mm	ØC mm	H mm	L mm	Lösering
765.005-4	108832	4	M5	5,0	SW9	3,0	9,0	18,0	POM schwarz
765.018-4	108833	4	G 1/8	9,9	14,0	3,0	15,0	20,5	POM schwarz
765.018-6	108834	6	G 1/8	9,9	14,0	5,0	15,0	23,0	POM schwarz
765.018-8	108835	8	G 1/8	9,9	14,0	6,0	15,0	24,5	POM schwarz
765.014-6	108836	6	G 1/4	13,3	18,0	5,0	17,0	24,0	POM schwarz
765.014-8	108837	8	G 1/4	13,3	18,0	7,0	17,0	26,0	POM schwarz
765.014-10	108838	10	G 1/4	13,3	18,0	9,0	17,0	27,0	Messing vernickelt schwarz
765.014-12	108839	12	G 1/4	13,3	18,0	9,0	17,0	28,0	Messing vernickelt schwarz
765.038-8	108840	8	G 3/8	16,6	21,0	7,0	20,0	27,0	POM schwarz
765.038-10	108841	10	G 3/8	16,6	21,0	9,0	20,0	28,0	Messing vernickelt schwarz
765.038-12	108842	12	G 3/8	16,6	21,0	11,0	20,0	29,0	Messing vernickelt schwarz



766.018-4

Ringstück, zweifach

Typen Nr.	Artikel Nr.	ØD mm	G mm	ØA mm	ØB mm	ØC mm	H mm	L mm	Lösering
766.005-4	108843	4	M5	5,0	7,0	3,0	9,0	18,0	POM schwarz
766.018-4	108844	4	G 1/8	9,9	14,0	3,0	15,0	21,0	POM schwarz
766.018-6	108845	6	G 1/8	9,9	14,0	5,0	15,0	23,0	POM schwarz
766.018-8	108846	8	G 1/8	9,9	14,0	6,0	15,0	24,5	POM schwarz
766.014-6	108847	6	G 1/4	13,3	18,0	5,0	17,0	24,0	POM schwarz
766.014-8	108848	8	G 1/4	13,3	18,0	7,0	17,0	26,0	POM schwarz
766.014-10	108849	10	G 1/4	13,3	18,0	9,0	17,0	26,0	Messing vernickelt schwarz
766.038-8	108850	8	G 3/8	16,7	21,0	7,0	20,0	27,0	POM schwarz
766.038-10	108851	10	G 3/8	16,7	21,0	9,0	20,0	28,0	Messing vernickelt schwarz
766.038-12	108852	12	G 3/8	16,7	21,0	11,0	20,0	29,0	Messing vernickelt schwarz