

Segmented supporting plates with longitudinal pole pitch

For placing on magnetic clamping plates with parallel pole pitch.



Application:

For placing on magnetic clamping plates with aligned segments in order to direct the magnetic field into the workpiece.

Execution:

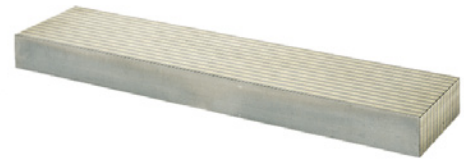
- The laminate plates are placed loosely on the clamping plate or attached to it. Among other things they offer the possibility of adding notches or integrating profile shapes without damaging the magnetic clamping plate.
- Machining is then possible without affecting the stability in any direction.
- Accessories for magnetic clamping plates.

Advantage:

- The range of possible applications for the magnetic clamping plates can be significantly expanded.

Delivery:

1x segmented supporting plate with longitudinal pole pitch



Art. no.	24431 130
Brand	SAV WALKER HAGOU
Manufacturer Part Number	248.03-320X100X40
Length	320 mm
Width	100 mm
Height	40 mm
Pole pitch ST/NE	3/1 mm
Max. wear of pole surface	8 mm
Gross Weight	10.300 kg
Product Group	230