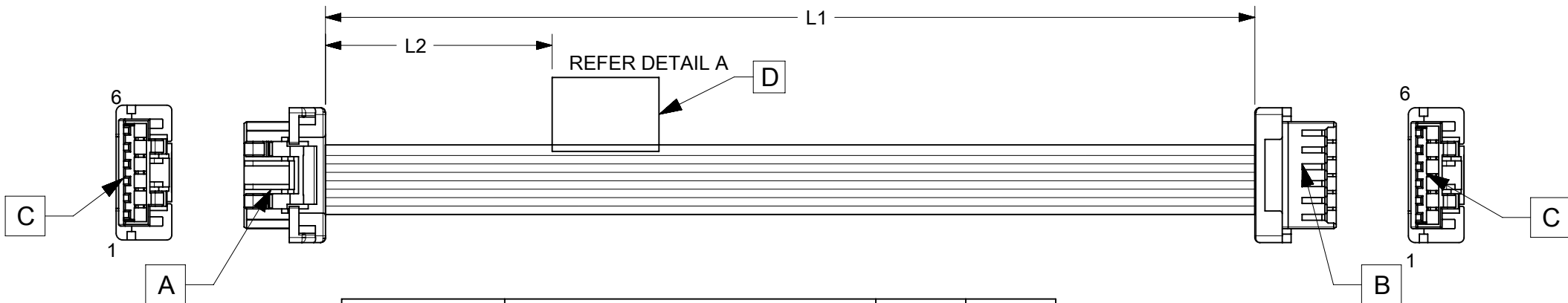


ITEM	PART#	DESCRIPTION	QTY	UOM
A,B	5024390600	2.0 W/B Single Plug Hsg 6Ckt	2	PC
C	5024380000	2.0 W/B Single Plug Term W/Plt Chain	12	PC
D	--	WHITE PART ID LABEL	1	PC

FROM	TO	DESCRIPTION	COLOUR
A1	B1	1X22AWG DISC SR-PVC BK UL10002	BLACK
A2	B2	1X22AWG DISC SR-PVC BK UL10002	BLACK
A3	B3	1X22AWG DISC SR-PVC BK UL10002	BLACK
A4	B4	1X22AWG DISC SR-PVC BK UL10002	BLACK
A5	B5	1X22AWG DISC SR-PVC BK UL10002	BLACK
A6	B6	1X22AWG DISC SR-PVC BK UL10002	BLACK



PART NUMBER	TITLE	L1	L2(REF)
2219581060	Clik-Mate 2.0 R-R 6ckt 50mm disc Sn	50±5	15
2219581061	Clik-Mate 2.0 R-R 6ckt 100mm disc Sn	100±5	15
2219581062	Clik-Mate 2.0 R-R 6ckt 150mm disc Sn	150±5	15
2219581063	Clik-Mate 2.0 R-R 6ckt 300mm disc Sn	300±5	15
2219581064	Clik-Mate 2.0 R-R 6ckt 600mm disc Sn	600±5	15

MOLEX P/N
MOLEX
BATCH WK/YR
DETAIL A

- NOTES**
1. CABLE ASSEMBLY TO BE TESTED 100% FOR CONTINUITY AND POLARITY.
 2. CONNECTOR VIEW SHOWN IS FROM MATING SIDE.
 3. LABEL TEXT MUST BE 2 MM MAX. IN HEIGHT WITH ARIAL FONT.
 4. LABEL MUST BE WRAPPED IN FLAG TYPE ON A SINGLE CABLE.

REVISION			
DATE	REV	DESCRIPTION	CHANGER
2022/02/12	A	INITIAL RELEASE	THANUB
DOCUMENT STATUS	P1	RELEASE DATE	2022/12/23 12:42:17

FUNCTIONAL SYMBOLS $\nabla_A = 0$ $\nabla_E = 0$ $\nabla_P = 0$ DIVISIONAL SYMBOLS	THIS DRAWING CONTAINS INFORMATION THAT IS PROPRIETARY TO MOLEX ELECTRONIC TECHNOLOGIES, LLC AND SHOULD NOT BE USED WITHOUT WRITTEN PERMISSION		molex SEE TABLE		
	DIMENSION UNITS	SCALE			
	mm	NTS	EC NO: 732309		
	GENERAL TOLERANCES (UNLESS SPECIFIED)		DRWN: THANUB 2022/12/02		
ANGULAR TOL ± °		CHK'D: SKUMAR07 2022/12/23			
4 PLACES ±		APPR: SKUMAR07 2022/12/23			
3 PLACES ±		INITIAL REVISION:			
2 PLACES ±		DRWN: THANUB 2022/12/02			
1 PLACE ±		APPR: SKUMAR07 2022/12/23			
0 PLACES ±		DOCUMENT NUMBER			
DRAFT WHERE APPLICABLE MUST REMAIN WITHIN DIMENSIONS		THIRD ANGLE PROJECTION	DRAWING	SERIES	MATERIAL NUMBER
			A4-SIZE	221958	2219581060
					CUSTOMER
					GENERAL MARKET
					DOC TYPE
					PSD
					DOC PART
					000
					REVISION
					A
					SHEET NUMBER
					1 OF 1