



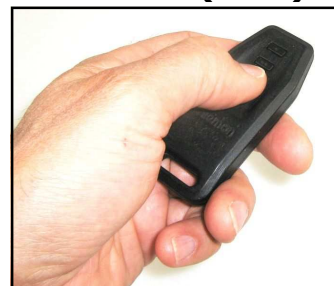
FOUR CHANNEL RF REMOTE CONTROL RECEIVER

VM160



Can be used as remote receiver or code lock security receiver.

Works with Velleman:
VM160T 4 ch. hand held transmitter (New)



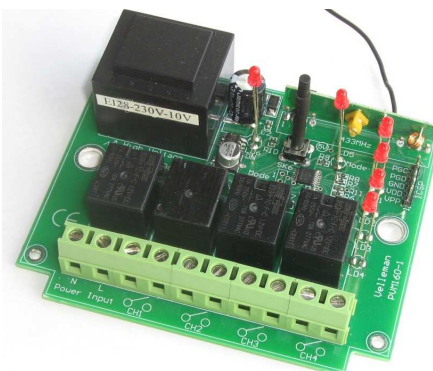
VM160DT 4ch. desktop transmitter (New)



- ☑ 4 relay channels
- ☑ Convenient timer options for each channel
- ☑ Automated learning function for transmitters
- ☑ Learn up to 31 transmitters
- ☑ Easy 230Vac power supply (no need for adaptor)
- ☑ LED indication per output
- ☑ Din rail fixation (6 modules wide)

SPECIFICATIONS:

- Uses 32-bit code technology
- More than 1,000,000,000 unique codes
- Code can easily be changed for safety purposes
- 433MHz operation
- R&TTE compliant (ETS 300-220) *
- Power supply : 230Vac
- Relay contacts Normal Open: 5A (3A inductive load)
- 433MHz operation
- Selectable timers per output: 0.5s (moment), 5s, 15min, 30min, 1h, 2h, 4h and On/Off.
- Open field range of up to 30m possible
- External antenna wire
- Dimensions : 108 x 102 x 45mm



*ONLY FOR EU COUNTRIES