



# 12V Warm White LED Bulb 1960mcd 100° MES Base

Order code: **41-0842**

MPF: OSSC-WC86A2B

## Description:

High brightness (1960mcd) 12V warm white LED miniature bulb, useful for a wide variety of applications including direct filament lamp replacements and backlighting.



## Characters:

- AC/DC Operation
- Viewing Angle 100°

## Absolute Maximum Rating (TA=25°C)

Item	Symbol	Value		Unit
		PG/UB/PW	HR/OR/YL	
Pulse Forward Current*	I <sub>FP</sub>	100*1	150*1	mA
Power Dissipation	P <sub>D</sub>	240	240	mW
Operating Temperature	T <sub>opr</sub>	-30~80	-30~80	°C
Storage Temperature	T <sub>stg</sub>	-30~100	-30~100	°C

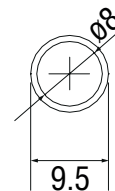
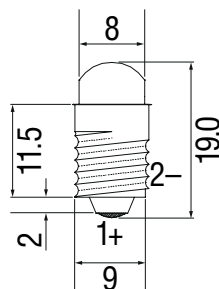
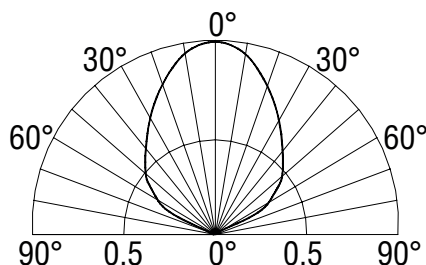
\*1 Pulse width Max.10ms Duty ratio max 1/10

## Electrical and Optical Characteristics (TA=25°C)

Order code*2	Emitting Colour	Lens Type	Forward Voltage V <sub>F</sub> (V)		Colour Temperature		Luminous Intensity I <sub>V</sub> (mcd)*3	
			AC	DC	X	Y		
			Working current: I <sub>F</sub> = 20mA					
41-0842	Warm White	White Diffused	12	16	2500	3500	1000	1560

\*2 See table for Luminous Intensity Ranks

\*3 Axial Direction (Luminous Intensity)



1: Anode  
2: Cathode  
Unit: mm  
Tolerance: ±0.3mm