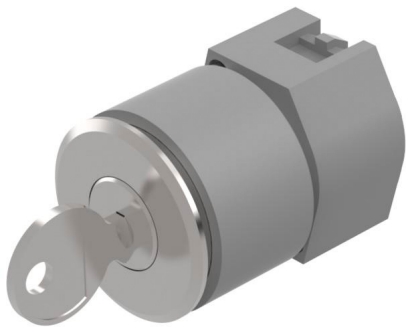


# EAO – Your Expert Partner for Human Machine Interfaces

## 704.117.018 - Keylock switch 3 positions round - Actuator

### 704.117.018 - Keylock switch 3 positions round - Actuator



*Attention: The preview is based on a sample product. This can differ from your current configuration.*

#### Attribute

Design	flush
Front dimension	Ø 35 mm
Front form	square
IP front protection	IP65
Mounting cut-out	Ø 30.5 mm
Front bezel colour	Nature
Front bezel material	Aluminium
Rotary positions	3
Switching action	Maintained (a) - Rest - Momentary
Switching angle	42° left / 42° right
Weight	0.099 kg

#### Schaltelement

max. number of switching elements	3
--------------------------------------	---

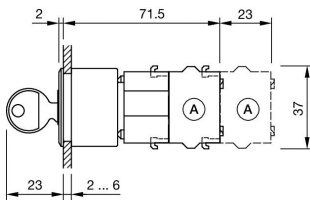
#### Function

Keylock switch

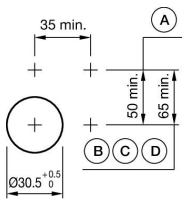
# EAO – Your Expert Partner for Human Machine Interfaces

704.117.018 - Keylock switch 3 positions round - Actuator

## Dimensions



## Mounting cut-outs



## Wiring diagrams



## Additional information

Max. 3 switching elements can be clipped on

The standard lock Ronis 251

The colour of anodised aluminium parts can vary due to technical production reasons

a = Key remove

The standard lock Ronis 251

a = Key remove