



Figure similar

CONTACTOR, 250KW/400V/AC-3 AC(40...60HZ)/DC  
OPERATION UC 21-27.3V AUXILIARY CONTACTS  
2NO+2NC 3-POLE, SIZE S12 BAR CONNECTIONS  
ELECTRONIC OPERATING MECHANISM WITH 24 V  
DC PLC INTERFACE CAGE CLAMP TERMINAL

product brand name	SIRIUS
Product designation	power contactor

### General technical data:

<b>Insulation voltage</b>		
<ul style="list-style-type: none"> <li>Rated value</li> </ul>	V	1 000
<b>Degree of pollution</b>		3
<b>Surge voltage resistance Rated value</b>	kV	8
<b>Mechanical service life (switching cycles)</b>		
<ul style="list-style-type: none"> <li>of the contactor typical</li> </ul>		10 000 000
<ul style="list-style-type: none"> <li>of the contactor with added electronics-compatible auxiliary switch block typical</li> </ul>		5 000 000
<ul style="list-style-type: none"> <li>of the contactor with added auxiliary switch block typical</li> </ul>		10 000 000
<b>Thermal short-time current restricted to 10 s</b>	A	4 000
<b>Protection class IP</b>		
<ul style="list-style-type: none"> <li>on the front</li> </ul>		IP00
<ul style="list-style-type: none"> <li>of the terminal</li> </ul>		IP00
<b>Equipment marking</b>		
<ul style="list-style-type: none"> <li>acc. to DIN EN 61346-2</li> </ul>		Q
<ul style="list-style-type: none"> <li>acc. to DIN EN 81346-2</li> </ul>		Q

### Main circuit:

<b>Number of poles for main current circuit</b>		3
<b>Number of NC contacts for main contacts</b>		0
<b>Number of NO contacts for main contacts</b>		3
<b>Operating current</b>		

<ul style="list-style-type: none"> <li>• at AC-1 <ul style="list-style-type: none"> <li>— at 400 V at ambient temperature 40 °C Rated value</li> <li>— up to 690 V at ambient temperature 40 °C Rated value</li> <li>— up to 690 V at ambient temperature 60 °C Rated value</li> </ul> </li> <li>• at AC-3 <ul style="list-style-type: none"> <li>— at 400 V Rated value</li> <li>— at 690 V Rated value</li> </ul> </li> <li>• at AC-4 at 400 V Rated value</li> </ul>	A	610
<ul style="list-style-type: none"> <li>• at AC-1 <ul style="list-style-type: none"> <li>— at 400 V at ambient temperature 40 °C Rated value</li> <li>— up to 690 V at ambient temperature 40 °C Rated value</li> <li>— up to 690 V at ambient temperature 60 °C Rated value</li> </ul> </li> <li>• at AC-3 <ul style="list-style-type: none"> <li>— at 400 V Rated value</li> <li>— at 690 V Rated value</li> </ul> </li> <li>• at AC-4 at 400 V Rated value</li> </ul>	A	610
<ul style="list-style-type: none"> <li>• at AC-1 <ul style="list-style-type: none"> <li>— up to 690 V at ambient temperature 40 °C Rated value</li> <li>— up to 690 V at ambient temperature 60 °C Rated value</li> </ul> </li> <li>• at AC-3 <ul style="list-style-type: none"> <li>— at 400 V Rated value</li> <li>— at 690 V Rated value</li> </ul> </li> <li>• at AC-4 at 400 V Rated value</li> </ul>	A	550
<ul style="list-style-type: none"> <li>• at AC-3 <ul style="list-style-type: none"> <li>— at 400 V Rated value</li> <li>— at 690 V Rated value</li> </ul> </li> <li>• at AC-4 at 400 V Rated value</li> </ul>	A	500
<ul style="list-style-type: none"> <li>• at AC-4 at 400 V Rated value</li> </ul>	A	450
<ul style="list-style-type: none"> <li>• at AC-4 at 400 V Rated value</li> </ul>	A	430
<b>Operating current with 1 current path</b>		
<ul style="list-style-type: none"> <li>• at DC-1 <ul style="list-style-type: none"> <li>— at 24 V Rated value</li> <li>— at 110 V Rated value</li> </ul> </li> <li>• at DC-3 at DC-5 <ul style="list-style-type: none"> <li>— at 24 V Rated value</li> <li>— at 110 V Rated value</li> </ul> </li> </ul>	A	400
<ul style="list-style-type: none"> <li>• at DC-1 <ul style="list-style-type: none"> <li>— at 110 V Rated value</li> </ul> </li> </ul>	A	33
<ul style="list-style-type: none"> <li>• at DC-3 at DC-5 <ul style="list-style-type: none"> <li>— at 24 V Rated value</li> </ul> </li> </ul>	A	400
<ul style="list-style-type: none"> <li>• at DC-3 at DC-5 <ul style="list-style-type: none"> <li>— at 110 V Rated value</li> </ul> </li> </ul>	A	3
<b>Operating current with 2 current paths in series</b>		
<ul style="list-style-type: none"> <li>• at DC-1 <ul style="list-style-type: none"> <li>— at 24 V Rated value</li> <li>— at 110 V Rated value</li> </ul> </li> <li>• at DC-3 at DC-5 <ul style="list-style-type: none"> <li>— at 110 V Rated value</li> <li>— at 24 V Rated value</li> </ul> </li> </ul>	A	400
<ul style="list-style-type: none"> <li>• at DC-1 <ul style="list-style-type: none"> <li>— at 110 V Rated value</li> </ul> </li> </ul>	A	400
<ul style="list-style-type: none"> <li>• at DC-3 at DC-5 <ul style="list-style-type: none"> <li>— at 110 V Rated value</li> </ul> </li> </ul>	A	400
<ul style="list-style-type: none"> <li>• at DC-3 at DC-5 <ul style="list-style-type: none"> <li>— at 24 V Rated value</li> </ul> </li> </ul>	A	400
<b>Operating current with 3 current paths in series</b>		
<ul style="list-style-type: none"> <li>• at DC-1 <ul style="list-style-type: none"> <li>— at 24 V Rated value</li> <li>— at 110 V Rated value</li> </ul> </li> <li>• at DC-3 at DC-5 <ul style="list-style-type: none"> <li>— at 110 V Rated value</li> <li>— at 24 V Rated value</li> </ul> </li> </ul>	A	400
<ul style="list-style-type: none"> <li>• at DC-1 <ul style="list-style-type: none"> <li>— at 110 V Rated value</li> </ul> </li> </ul>	A	400
<ul style="list-style-type: none"> <li>• at DC-3 at DC-5 <ul style="list-style-type: none"> <li>— at 110 V Rated value</li> </ul> </li> </ul>	A	400
<ul style="list-style-type: none"> <li>• at DC-3 at DC-5 <ul style="list-style-type: none"> <li>— at 24 V Rated value</li> </ul> </li> </ul>	A	400
<b>Operating power</b>		
<ul style="list-style-type: none"> <li>• at AC-1 at 400 V Rated value</li> <li>• at AC-2 at 400 V Rated value</li> <li>• at AC-4 at 400 V Rated value</li> </ul>	kW	362
<ul style="list-style-type: none"> <li>• at AC-2 at 400 V Rated value</li> </ul>	kW	291
<ul style="list-style-type: none"> <li>• at AC-4 at 400 V Rated value</li> </ul>	W	250 000
<b>Operating power</b>		
<ul style="list-style-type: none"> <li>• at AC-1 <ul style="list-style-type: none"> <li>— at 230 V at 60 °C Rated value</li> <li>— at 690 V at 60 °C Rated value</li> <li>— at 690 V Rated value</li> </ul> </li> <li>• at AC-3</li> </ul>	kW	151
<ul style="list-style-type: none"> <li>• at AC-1 <ul style="list-style-type: none"> <li>— at 690 V at 60 °C Rated value</li> </ul> </li> </ul>	kW	624
<ul style="list-style-type: none"> <li>• at AC-1 <ul style="list-style-type: none"> <li>— at 690 V Rated value</li> </ul> </li> </ul>	kW	624
<ul style="list-style-type: none"> <li>• at AC-3</li> </ul>		

— at 230 V Rated value	kW	164
— at 400 V Rated value	kW	291
— at 500 V Rated value	kW	363
— at 690 V Rated value	kW	453
<b>Operating power for <math>\geq 200000</math> operating cycles at AC-4</b>		
• at 400 V Rated value	kW	98
• at 690 V Rated value	kW	148
<b>Operating frequency</b>		
• at AC-3 maximum	1/h	420

Control circuit/ Control:		
<b>Type of voltage of the control supply voltage</b>		AC/DC
<b>Control supply voltage with AC</b>		
• at 50 Hz Rated value	V	21 ... 27.3
• at 60 Hz Rated value	V	21 ... 27.3
<b>Control supply voltage for DC</b>		
• Rated value	V	21 ... 27.3
• Rated value	Hz	40
<b>Control supply voltage frequency 2 Rated value</b>	Hz	60
<b>Operating range factor control supply voltage rated value of the magnet coil with AC</b>		
• at 50 Hz		0.8 ... 1.1
• at 60 Hz		0.8 ... 1.1
<b>Operating range factor control supply voltage rated value of the magnet coil for DC</b>		0.8 ... 1.1
<b>Design of the surge suppressor</b>		with varistor
<b>Apparent pick-up power of the magnet coil with AC</b>	V·A	750
<b>Apparent holding power of the magnet coil with AC</b>	V·A	7
<b>Closing power of the magnet coil for DC</b>	W	800
<b>Holding power of the magnet coil for DC</b>	W	5
<b>Inductive power factor</b>		
• with closing power of the coil		0.8
• with the holding power of the coil		0.8

Auxiliary circuit:		
<b>Number of NC contacts</b>		
• for auxiliary contacts		
— instantaneous contact		2
<b>Number of NO contacts</b>		
• for auxiliary contacts		
— instantaneous contact		2
<b>Operating current at AC-15</b>		
• at 230 V Rated value	A	6

<ul style="list-style-type: none"> <li>• at 400 V Rated value</li> </ul>	A	3
<b>Operating current</b>		
<ul style="list-style-type: none"> <li>• at DC-12 at 220 V Rated value</li> </ul>	A	1
<ul style="list-style-type: none"> <li>• at DC-13 at 220 V Rated value</li> </ul>	A	0.3
<b>Operating current</b>		
<ul style="list-style-type: none"> <li>• at DC-12 <ul style="list-style-type: none"> <li>— at 60 V Rated value</li> <li>— at 110 V Rated value</li> </ul> </li> </ul>	A	6
	A	3
<ul style="list-style-type: none"> <li>• at DC-13 <ul style="list-style-type: none"> <li>— at 24 V Rated value</li> <li>— at 60 V Rated value</li> <li>— at 110 V Rated value</li> </ul> </li> </ul>	A	10
	A	2
	A	1

<b>UL/CSA ratings:</b>		
<b>Contact rating of the auxiliary contacts acc. to UL</b>		A600 / Q600

<b>Short-circuit:</b>		
<b>Design of the fuse link</b>		
<ul style="list-style-type: none"> <li>• for short-circuit protection of the main circuit <ul style="list-style-type: none"> <li>— with type of assignment 1 required</li> <li>— with type of assignment 2 required</li> </ul> </li> <li>• for short-circuit protection of the auxiliary switch required</li> </ul>		fuse gL/gG: 630 A fuse gL/gG: 500 A fuse gL/gG: 10 A

<b>Installation/ mounting/ dimensions:</b>		
<b>Mounting type</b>		screw fixing
<ul style="list-style-type: none"> <li>• Side-by-side mounting</li> </ul>		Yes
<b>Height</b>	mm	214
<b>Width</b>	mm	160
<b>Depth</b>	mm	225
<b>Required spacing</b>		
<ul style="list-style-type: none"> <li>• for grounded parts <ul style="list-style-type: none"> <li>— at the side</li> </ul> </li> </ul>	mm	10

<b>Connections/ Terminals:</b>		
<b>Type of electrical connection</b>		
<ul style="list-style-type: none"> <li>• for main current circuit</li> <li>• for auxiliary and control current circuit</li> </ul>		Cage Clamp terminals Cage Clamp terminals
<b>Type of connectable conductor cross-section</b>		
<ul style="list-style-type: none"> <li>• for AWG conductors for main contacts</li> <li>• for auxiliary contacts <ul style="list-style-type: none"> <li>— solid</li> <li>— finely stranded with core end processing</li> <li>— finely stranded without core end processing</li> </ul> </li> </ul>		2/0 ... 500 kcmil  2x (0.25 ... 2.5 mm <sup>2</sup> ) 2x (0.25 ... 1.5 mm <sup>2</sup> ) 2x (0.25 ... 2.5 mm <sup>2</sup> )

- for AWG conductors for auxiliary contacts

2x (24 ... 14)

#### Mechanical data:

**Size of contactor** S12

#### Ambient conditions:

**Installation altitude at height above sea level maximum** m 2 000

**Ambient temperature**

- during operation °C -25 ... +60
- during storage °C -55 ... +80

#### Certificates/ approvals:

##### General Product Approval

##### Functional Safety/Safety of Machinery

##### Declaration of Conformity



[Type Examination](#)



##### Test Certificates

##### Shipping Approval

##### other

[Special Test Certificate](#)



[Confirmation](#)

[Environmental Confirmations](#)

##### other

[other](#)

#### Further information

##### Information- and Downloadcenter (Catalogs, Brochures,...)

<http://www.siemens.com/industrial-controls/catalogs>

##### Industry Mall (Online ordering system)

<http://www.siemens.com/industrymall>

##### Cax online generator

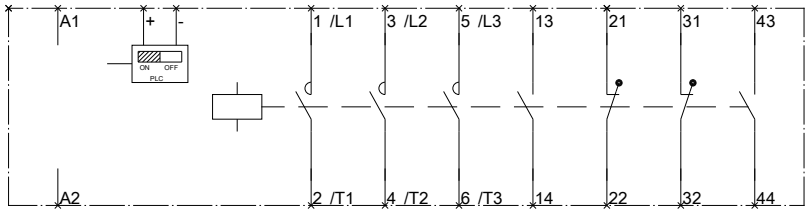
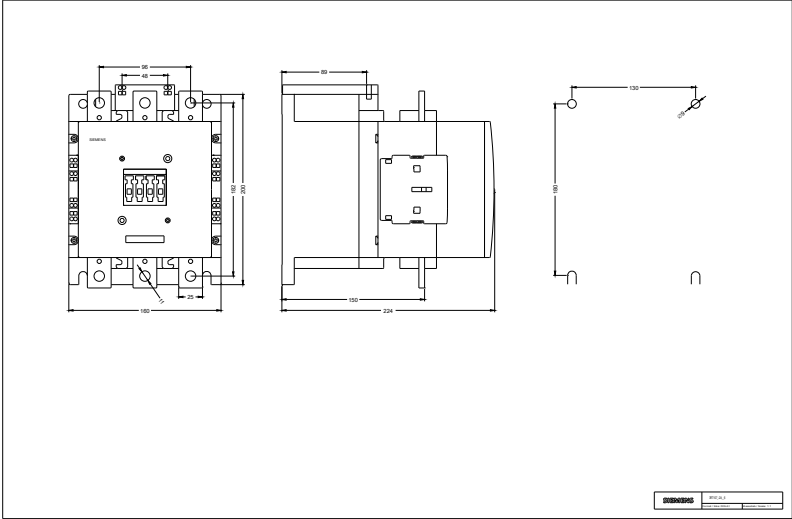
<http://support.automation.siemens.com/WW/CAXorder/default.aspx?lang=en&mlfb=3RT10762NB36>

##### Service&Support (Manuals, Certificates, Characteristics, FAQs,...)

<http://support.automation.siemens.com/WW/view/en/3RT10762NB36/all>

##### Image database (product images, 2D dimension drawings, 3D models, device circuit diagrams, EPLAN macros, ...)

[http://www.automation.siemens.com/bilddb/cax\\_de.aspx?mlfb=3RT10762NB36&lang=en](http://www.automation.siemens.com/bilddb/cax_de.aspx?mlfb=3RT10762NB36&lang=en)



last modified:

11.03.2015