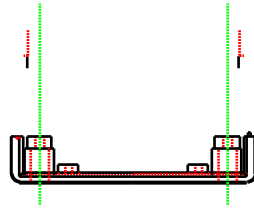
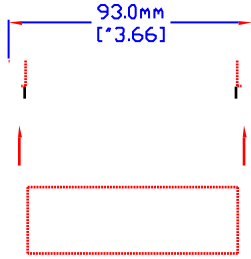
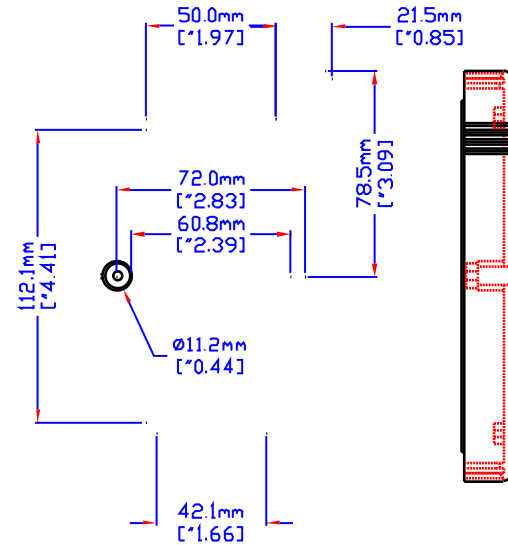
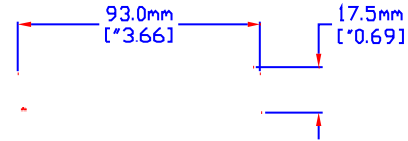
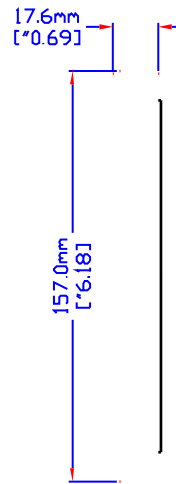
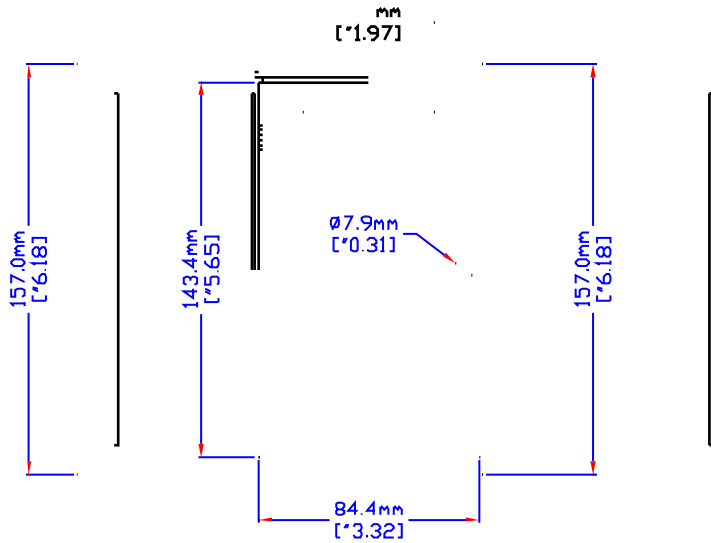
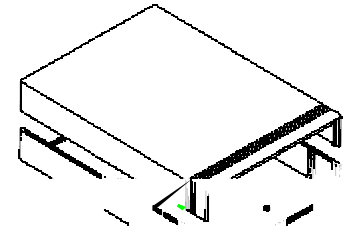


MATERIAL: -ABS UL94 VO WITH BRASS INSERTS & M3 SCREWS.
 -STYRENE SELF TAPPING SCREWS,
 -AVAILABLE IN BLACK & GRAY,

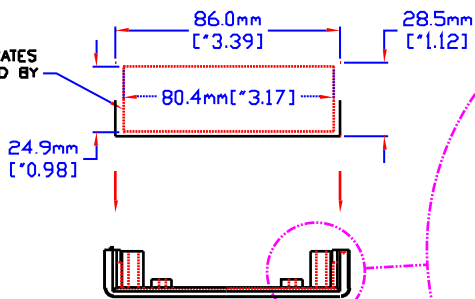


3D VIEW
 (NOT TO SCALE)

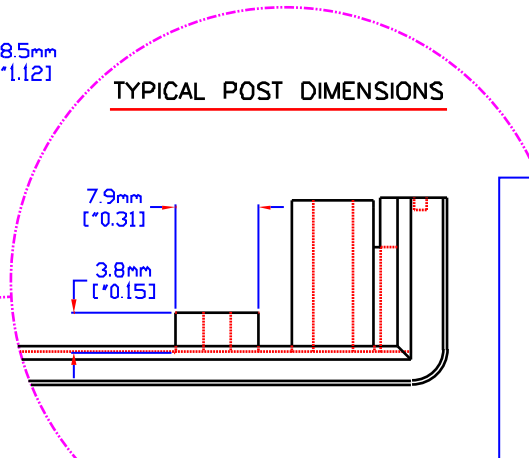


CASE 'B'

HIDDEN LINE INDICATES THE AREA COVERED BY ENCLOSURE SLOT



TYPICAL POST DIMENSIONS



HAMMOND MANUFACTURING

1598A

CANADA - PH (519) 886 7170 - FAX (519) 886 8311
 U.S.A. - PH (716) 631 5700 - FAX (716) 631 1156