

MATERIAL

Polyamide based (PA) technopolymer.

STANDARD EXECUTIONS

Blind holes for fitting by means of no. 2 self-tapping screws for plastic materials Ø3.5 (UNI ISO 7049), not included in the supply.

Maximum tightening torque of the self-tapping screws 1,2 [Nm].

- **MFH-AF**: in 4 standard colours: black, orange, grey, red, matte finish.
- **MFH-AF-CLEAN**: white colour similar to RAL 9002, matte finish.
- **MFH-CR**: chrome-plated, matte finish.

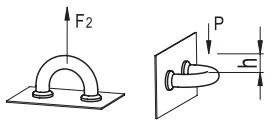
CHEMICAL AGENTS RESISTANCE (FOR MFH-CR)

The chrome-plating makes the surface finish semi-glossy and homogeneous to facilitate cleaning operations.

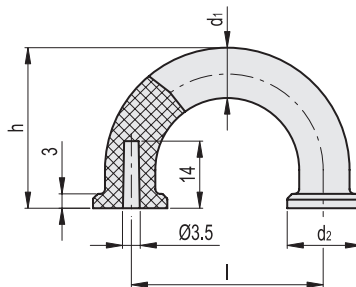
The chrome-plated surface is resistant to wear, scrapes and shocks. Laboratory tests carried out at ambient temperature (23°C) proved the resistance of the latch surface to: detergents, acetone, ethyl alcohol, formic acid, chlorine solutions.

TECHNICAL DATA

Tensile stress and impact strength: the values F2 and L1 indicated in the table were obtained during breaking tests carried out with the appropriate dynamometric equipment under the test conditions shown in the figure with ambient temperature.



$$L1 [J] = P [N] \cdot h [m]$$



* Complete with colour index, example: 138201-C2 MFH-30-AF 3.5-C2

C9	C2	C3	C6
RAL9005	RAL2004	RAL7035	RAL3000

MFH-AF

Code	Description	l	d1	d2	h	F2 [N]	L1 [J]	⚖️
138201-*	MFH-30-AF 3,5-*	29.5	9	12	27	2300	6	6
138221-*	MFH-40-AF 3,5-*	39.5	10	15	33.5	2300	10	9

MFH-AF-CLEAN

Code	Description	l	d1	d2	h	F2 [N]	L1 [J]	⚖️
151456	MFH-30-AF 3,5 CLEAN	29.5	9	12	27	2300	6	6
151458	MFH-40-AF 3,5 CLEAN	39.5	10	15	33.5	2300	10	9

MFH-CR

Code	Description	l	d1	d2	h	F2 [N]	L1 [J]	⚖️
152501	MFH-30-AF 3,5-CR	29.5	9	12	27	2300	6	6
152511	MFH-40-AF 3,5-CR	39.5	10	15	33.5	2300	10	9

- 1
- 2
- 3
- 4
- 5
- 6
- 7
- 8
- 9
- 10
- 11
- 12
- 13
- 14
- 15
- 16
- 17
- 18