

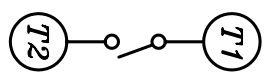
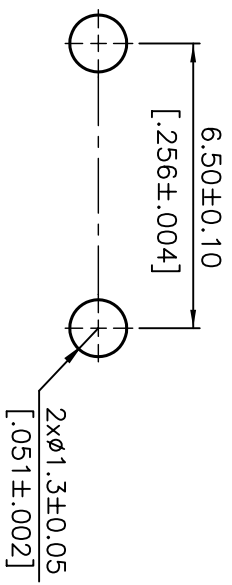
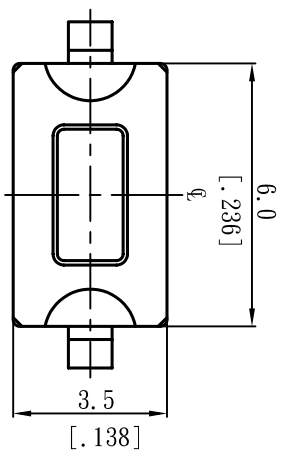
## Tactile switches

Order code	Manufacturer code	Description
78-1120	DTS-31N-B	4.3MM MINIATURE RECTANGULAR TACT SWITCH
78-1122	DTS-32N-B	5.0MM MINIATURE RECTANGULAR TACT SWITCH

Tactile switches	Page 1 of 2
The enclosed information is believed to be correct, Information may change 'without notice' due to product improvement. Users should ensure that the product is suitable for their use. E. & O. E.	Revision A 04/07/2003

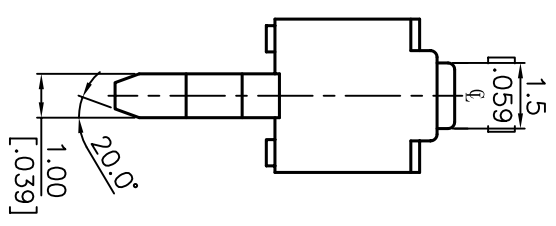
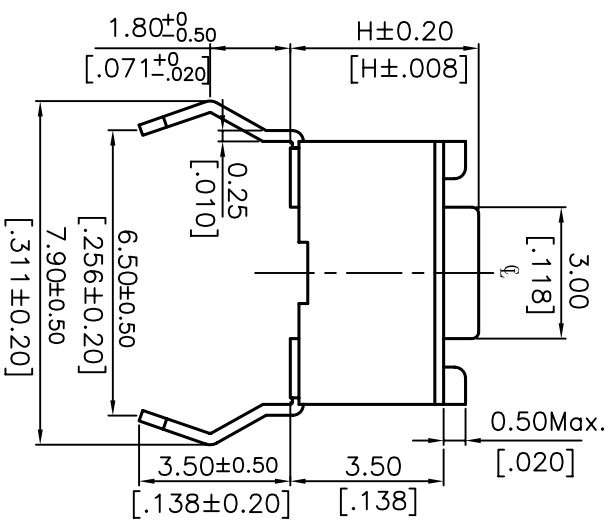
1 2 3 4 5 6 7 8 9 10

**NOTE:**  
 1. ALL DIMENSIONS ARE IN MILLIMETERS, BRACKETED DIMENSIONS ARE IN INCHES.  
 2. GENERAL TOLERANCES  $\pm 0.20mm$ .



P.C.B. LAYOUT

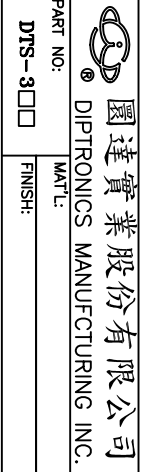
CIRCUIT DIAGRAM



DTS-32 □	5.0 [.197]	Y	YELLOW 520g
		S	SALMON 320g
DTS-31 □	4.3 [.169]	R	RED 260g
		N	BROWN 160g
DTS-30 □	4.3 [.169]	Y	YELLOW 520g
		S	SALMON 320g
DTS-30 □	4.3 [.169]	R	RED 260g
		N	BROWN 160g
PROD. NO.	H	COLOR FOR OPERATING FORCE	

△	D	増訂DTS-38R		
△	C	増訂DTS-38Y		
△	B	増訂DTS-32	05.12.99	楊豐富
△	A	DWG. REL.	11.28.98	楊豐富
ZONE	REV	DESCRIPTION	DATE	APPD.

APPD:	QTY:	SCALE:	8 : 1
CHKD:	UNITS:	mm	
DR:	REV:	D	
DESIGN:	PART NO.:	DTS-30 □	
	MAT'L:		
	FINISH:		
	PART NAME:	TACTILE SWITCH (3.5x6) (MECHANICAL CONTACT TYPE)	
	DWG NO.:	R D 5 P 3	



達實業股份有限公司  
 DIPTRONICS MANUFACTURING INC.