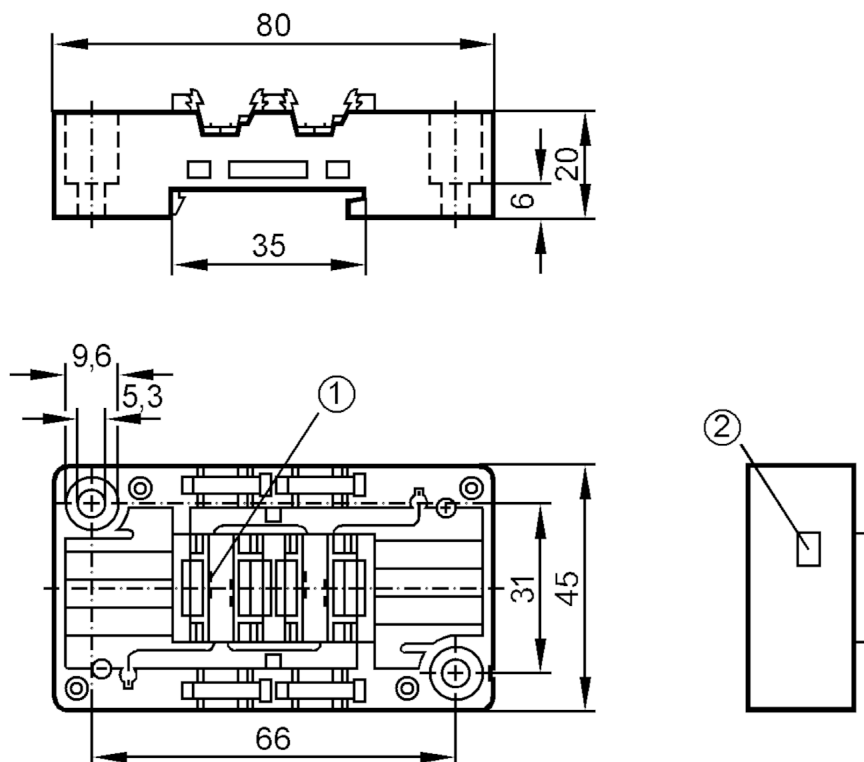


## Lower part for AS-Interface module

EEMS-Base FC V2A



- 1 contact pins  
2 panel for labelling

## Electrical data

Operating voltage	[V]	26.5...31.6 DC
Additional voltage supply	[V]	24 DC

## Outputs

Electrical design	AS-i
Contact rating	< 2 A

## Operating conditions

Ambient temperature	[°C]	-25...85
Protection	IP 67; (depending on the upper part used: IP 20 / IP 65 / IP 67)	

## Mechanical data

Weight	[g]	61
Type of mounting	mounting on DIN rail and panel	
Dimensions	[mm]	45 x 80 x 20
Materials	PBT; stainless steel (1.4305 / 303)	

## Remarks

Pack quantity	1 pcs.
---------------	--------

## Electrical connection

contact pins in module upper part :  
quick mounting technology for AS-i flat cable: