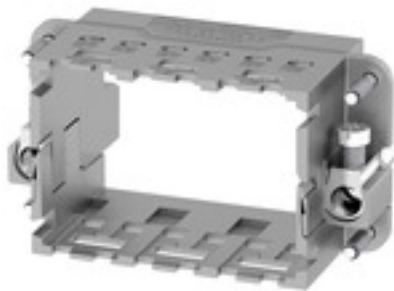


**ModuPlug
HDC MF 10B CA**

Weidmüller Interface GmbH & Co. KG
Klingenbergstraße 16
D-32758 Detmold
Germany
Fon: +49 5231 14-0
Fax: +49 5231 14-292083
www.weidmueller.com

**Simple**

The innovative sliding frame has two defined lock-in positions for opening and closing. This enables simple and tool-free module assembly.

General ordering data

Type	HDC MF 10B CA
Order No.	1428980000
Version	Frame
GTIN (EAN)	4050118233278
Qty.	1 pc(s).

**ModuPlug
HDC MF 10B CA**

Weidmüller Interface GmbH & Co. KG
 Klingenbergstraße 16
 D-32758 Detmold
 Germany
 Fon: +49 5231 14-0
 Fax: +49 5231 14-292083
 www.weidmueller.com

Technical data**Dimensions and weights**

Net weight	67.541 g
------------	----------

Temperatures

Limit temperature	-40 °C ... 125 °C
-------------------	-------------------

General data

Material	Diecast zinc	Number of slots	3
Plugging cycles	≥ 500	Series	ModuPlug
Size	4		

PE connection data

Conductor cross-section, max.	10 mm ²	Conductor cross-section, min.	0.5 mm ²
Connection type PE	Screw connection	Tightening torque, max. PE connection	1.2 Nm

Classifications

ETIM 5.0	EC002312	ETIM 6.0	EC002312
eClass 6.2	27-14-34-19	eClass 9.1	27-44-02-06

Product information

Descriptive text ordering data	3 module slots; double-sided PE screw connection: 0.5 - 10 mm ² (AWG 20 ... 8); prepared conductor in accordance with IEC 60999-1
Descriptive text technical data	Bei Einbau in IP65 Gehäuse muss die hohe Gehäuse-Bauform gewählt werden.

Approvals

Approvals

**Downloads**

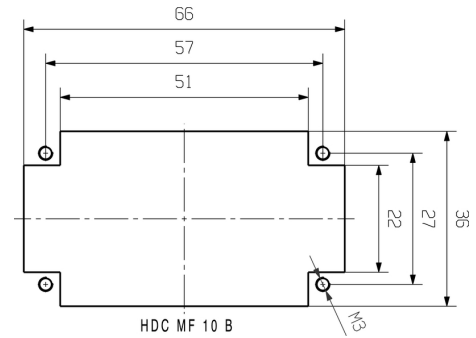
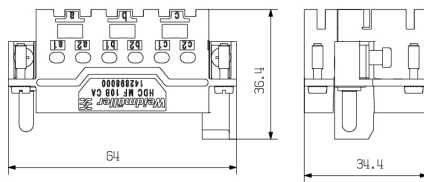
Brochure/Catalogue	CAT 3 HDC 17/18 EN FL FIELDWIRING EN
Engineering Data	EPLAN

Data sheet

**ModuPlug
HDC MF 10B CA**

Weidmüller Interface GmbH & Co. KG
Klingenbergstraße 16
D-32758 Detmold
Germany
Fon: +49 5231 14-0
Fax: +49 5231 14-292083
www.weidmueller.com

Drawings



**ModuPlug
HDC MF 10B CA**

Weidmüller Interface GmbH & Co. KG
 Klingenbergstraße 16
 D-32758 Detmold
 Germany
 Fon: +49 5231 14-0
 Fax: +49 5231 14-292083
 www.weidmueller.com

Accessories

Miscellaneous



In addition to heavy-duty connectors, RockStar® includes the appropriate accessories for effective, functional and safe system cabling; e.g. coding systems, shield clamps, cover plates and replacement seals

General ordering data

Type	Order No.	Version	GTIN (EAN)	Qty.
HDC MF FIXING	1480290000	Transport lock	4050118288704	20 pc(s).
HDC MF CA16 PE	1480940000	PE extension	4050118289657	1 pc(s).

ModuPlug



Many demands are made on a connector's shielding. Several tailored solutions are available for meeting these requirements:

- Shield discharge via an EMC cable gland
- The use of shield levers together with shield clips

Shield clips are used to fasten the shielded conductor to the shield lever. The shield clips are available in various sizes for different sized conductors.

General ordering data

Type	Order No.	Version	GTIN (EAN)	Qty.
HDC MSL10	1435420000	Shield clamp	4050118239959	1 pc(s).