

Pins · with plastic bearing surface

22691.0042



Product Description

Pins with plastic bearing surface can be used as protective supports, stops, and thrust pads. This protects high-quality surfaces from damage.

Material

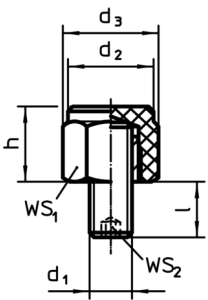
Insert

- Plastic (PEEK), blue

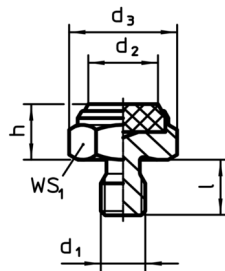
Body

- Stainless steel 1.4305

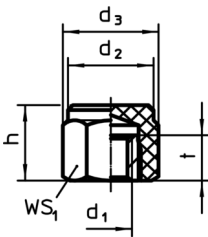
Drawing



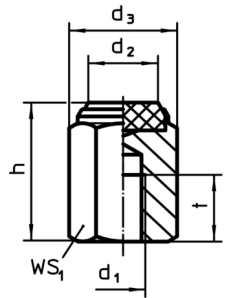
picture 1



picture 2



picture 3

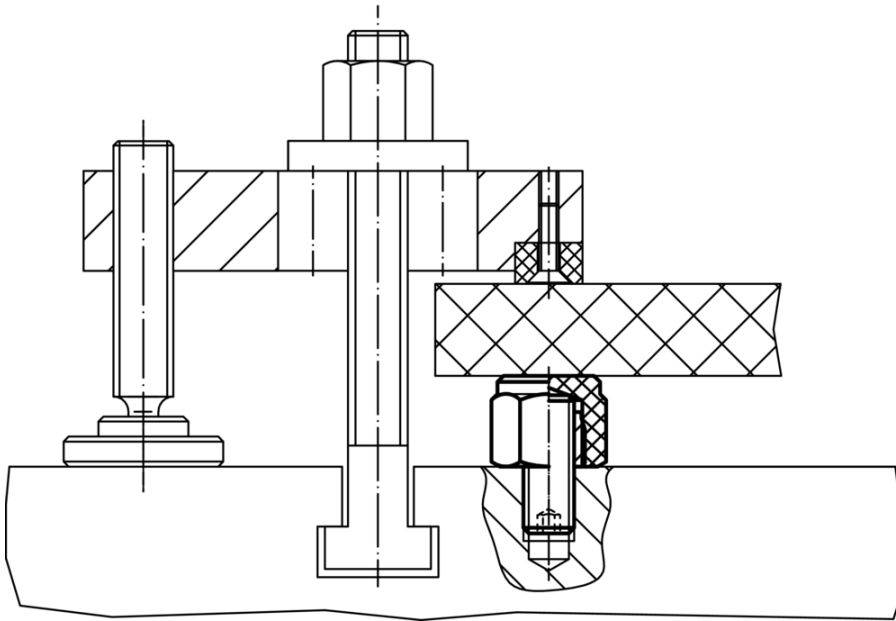


picture 4

Order information

Dimensions					WS ₁	Load capacity for static load max.	Tightening torque max.	Temperature		Weight	Art. No.
h	d ₁	d ₂	d ₃	l				min.	max.		
±0.1		[mm]			[mm]	[kN]	[Nm]	[°C]	[g]		
with male thread, plastic insert, bearing surface plain – picture 2											
15	M12	17.5	25.2	14	22	22.5	60	-60	250	45	22691.0042

Application example



Compliance

RoHS compliant

Compliant according to Directive 2011/65/EU and Directive 2015/863

Does not contain SVHC substances

No SVHC substances with more than 0.1% w/w contained - SVHC list [REACH] as of 10.06.2022

Does not contain Proposition 65 substances

No Proposition 65 substances included

<https://www.P65Warnings.ca.gov/>

Free from Conflict Minerals

This product does not contain any substances designated as "conflict minerals" such as tantalum, tin, gold or tungsten from the Democratic Republic of Congo or adjacent countries.