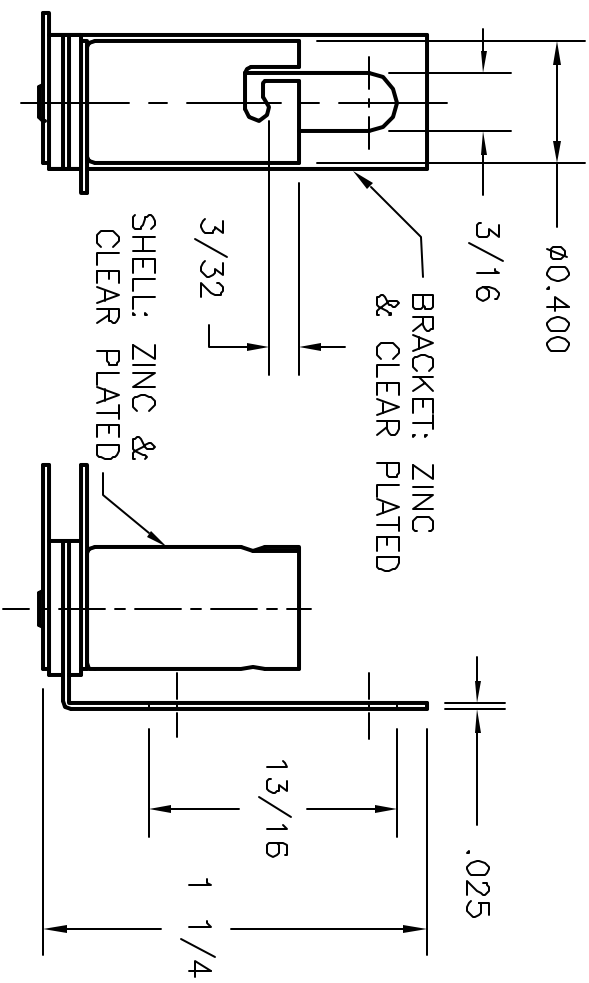
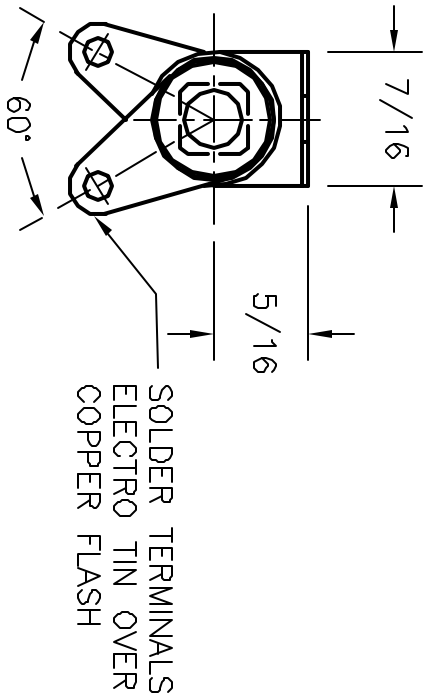


ALL RIGHTS RESERVED. NO PORTION OF THIS PUBLICATION, WHETHER IN WHOLE OR IN PART CAN BE REPRODUCED WITHOUT THE EXPRESS WRITTEN CONSENT OF SPC TECHNOLOGY.

REVISIONS		DCP NO. SPC-F004	DATE	DESCRIPTION	DATE	APPROV	DATE
DCP #	REV	DESCRIPTION	DRAWN	DATE	CHECKED	DATE	DATE
1848	A	RELEASED	JIN	09/29/08	JMM	09/29/08	JMM



ALL DIMENSIONS AND TOLERANCES UNLESS OTHERWISE SPECIFIED ARE IN INCHES. DIMENSIONS ARE TO BE TAKEN TO THE CENTER OF THE HOLE UNLESS OTHERWISE SPECIFIED. DIMENSIONS ARE TO BE TAKEN TO THE CENTER OF THE HOLE UNLESS OTHERWISE SPECIFIED. DIMENSIONS ARE TO BE TAKEN TO THE CENTER OF THE HOLE UNLESS OTHERWISE SPECIFIED.



DRAWN BY:		DATE:		DRAWING TITLE:		SCALE:		SHEET:	
JASON NASH		09/29/08		INSULATED MINIATURE BAYONET BASE LAMPHOLDER		NTS		1 OF 1	
CHECKED BY:		DATE:		SIZE:		DWG. NO.:		ELECTRONIC FILE	
JMM		09/29/08		A		SPC21724		16M1215.DWG	
APPROVED BY:		DATE:		SCALE:		U.O.M.:		SHEET:	
JMM		09/29/08		NTS		INCHES		1 OF 1	

TOLERANCES UNLESS OTHERWISE SPECIFIED
 FRACTIONAL ±.1/64
 DECIMAL .XXX ±.005
 ANGULAR ±1°