

# GN 798.4 | Revolving handles

Mounting on the operator's side, stainless steel



- 1
- 2
- 3
- 4
- 5
- 6
- 7
- 8
- 9
- 10
- 11
- 12
- 13
- 14
- 15
- 16
- 17
- 18

## MATERIAL

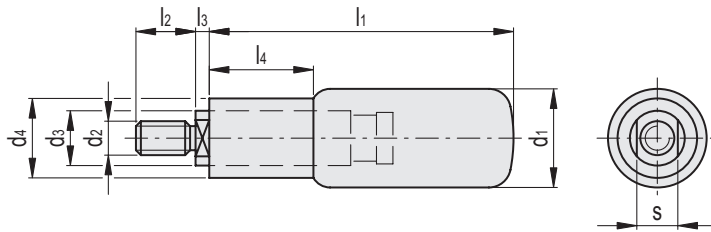
Fine turned AISI 303 stainless steel.

## STANDARD EXECUTION

AISI 303 stainless steel pin.

## FEATURES

Using a wrench for the flat faces (s) at the base of the pin, the front locking allows to exert a greater torque than the one applied with a wrench to the hexagonal socket into the threaded pin (back mounting).



Code	Description	d1	d2	d3	d4	l1	l2	l3	l4	s	
GN.11212	GN 798.4-NI-18-M6	18	M6	10	14.5	56	13	4	19	8	89
GN.11215	GN 798.4-NI-22-M8	22	M8	14	18.5	59	14	5.2	21	11	157
GN.11217	GN 798.4-NI-24-M10	24	M10	14	18.5	74	16	5.2	27	11	209

Fixed & Revolving handles