

## Thread-turning inserts, full profile 60° HC 5630

For male thread machining, right-hand

**ATORN**<sup>®</sup>

### Application

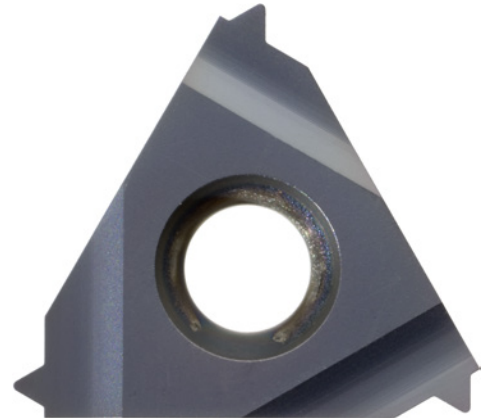
For producing male threads on CNC machines in steel, stainless steel and cast iron material groups at mid-range to high cutting speed.

### Version

- Ground thread-turning insert with TiALN coating

### Advantage

- Ground thread-turning insert ensures good surface qualities, cutting precision and thread with exact profile reproduction
- High cutting speed and service lives through innovative TiALN coating technology
- High productivity, no de-burring of thread required



<b>Art. no.</b>	<b>17741 116</b>
<b>ISO name</b>	22 (ER/EL) 3.5 ISO
<b>Pitch</b>	3.5 mm
<b>Machining direction</b>	Right
<b>Carbide type</b>	HC5630
<b>Material to be processed</b>	Steel, Stainless steel, Cast metal
<b>Min./max. Vc in steel</b>	90-120 m/min
<b>Min./max. Vc in stainless steel</b>	80-100 m/min
<b>Min./max. Vc in cast iron</b>	100-110 m/min

### EAN-Code

4050293222395