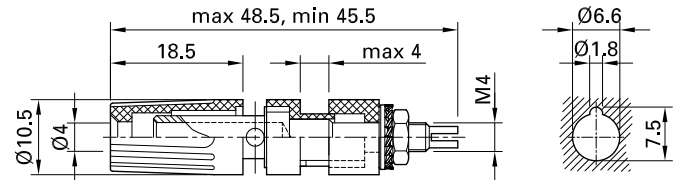
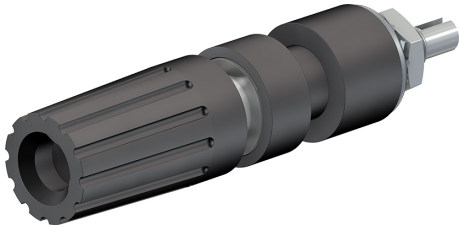


# PK4-T



Item number 23.0330-\*

Insulated, with Ø 4 mm rigid socket and insulated head undetachable. Ø 2.5 mm cross hole for quick wire connection. Machined brass. For mounting, with anti-rotation lug, in front panels up to 4 mm thick. Threaded bolt M4.

Technical data	
Diameter of plug system	4 mm
Rated Values	30 V, 35 A / 60 V, 35 A
Surface treatment electrical contact	Ni
Base material electrical contact	CuZn
Standard color(s) *	<span style="background-color: #ffff00; border: 1px solid black; padding: 2px;">20</span> <span style="background-color: #000000; color: white; border: 1px solid black; padding: 2px;">21</span> <span style="background-color: #ff0000; color: white; border: 1px solid black; padding: 2px;">22</span> <span style="background-color: #0000ff; color: white; border: 1px solid black; padding: 2px;">23</span> <span style="background-color: #ffff00; border: 1px solid black; padding: 2px;">24</span> <span style="background-color: #008000; color: white; border: 1px solid black; padding: 2px;">25</span> <span style="border: 1px solid black; padding: 2px;">29</span>
Thread	M4
Test accessory acc. to	IEC EN 61010-2-030